

Total number of printed pages: 2

NB-E/E/1

2024
CLASS – VIII (Phase-1)
ENGLISH

Total marks : 40

Time : 1½ hours

General instructions:

- i) Approximately 20 minutes is allotted to read the question paper and revise the answers.
- ii) All questions are compulsory. Internal option is given in some questions.
- iii) The question paper consists of 13 questions, divided into Sections A & B.
- iv) Marks allocated to every question are indicated against it.

N.B : Check that all pages of the question paper is complete as indicated on the top left side.

SECTION –A (Prose)

1. Choose the correct answer from the alternatives given: 1x3=3

- i) Almas Javed was a ten year old student of _____ in Port Blair.
 - a. Sister's Convent
 - b. Carmel Convent
 - c. St.Paul's Convent
 - d. Carmelite Monastery
- ii) Where did Parimal Ghose claim to have met Bepin Babu?
 - a. Kanpur
 - b. Kolkata
 - c. Kalicharan's
 - d. Ranchi
- iii) Between 1822 and 1836 _____ lakh Indians died of starvation.
 - a. ten
 - b. twelve
 - c. fifteen
 - d. twenty

Answer the following questions in about 15-20 words: 2x3=6

- 2. What was Mrs. Macpherson's age in Part- III of the lesson, 'The Best Christmas Present in the World'? Where was she?
- 3. Where did the Smith family and the others on the beach go to escape from the Tsunami?
- 4. Where did Bepin Babu say he went in October ,1958? (Bepin Choudhury's Lapse of Memory)

Answer any one of the following questions in about 30-40 words: 3x1=3

- 5. a. How do you think her Geography teacher felt when he heard about what Tilly had done in Phuket? (The Tsunami)

Or

- b. Do you think the Indian Princes were short-sighted in their approach to the events of 1757? (Glimpses of the Past)

Answer the following questions in about 50-60 words: 4x2=8

- 6. Mention the following: (Glimpses of the Past)
 - i. Two examples of social practices prevailing then.
 - ii. Two oppressive policies of the British.
- 7. How do you think Bepin Babu reacted when he found out that Chunilal had tricked him?

Answer any one of the following questions in about 70-80 words:

5x1=5

8. a Do you think the soldiers of the two armies are like each other or different from each other? Find evidence from the story to support your answer. (The Best Christmas Present in the World)

Or

- b. What are the different ideas about why so few animals were killed in the Tsunami? Which idea do you find more believable? (The Tsunami)

SECTION –B (Poetry)

9. Choose the correct answer from the alternatives given:

1x2=2

- i) Who said 'I am your servant and friend'?
- | | |
|---------|------------|
| a. Ant | b. Cricket |
| c. Both | d. Poet |
- ii) When the jet sprang into the sky, it was clear why the _____ had developed the way it had.
- | | |
|------------|------------|
| a. village | b. country |
| c. town | d. city |

Answer the following questions in about 15-20 words:

2x2=4

10. Find in the poem the lines that mean the same as "neither a borrower nor a lender be".
(The Ant and the Cricket)
11. What was difficult to understand about the earth when the jet was six miles high?
(Geography Lesson)

Answer the following question in about 50 - 60 words:

4x1=4

12. The ant tells the cricket to dance the winter away. Do you think the word 'dance' is appropriate here? If so why? (The Ant and the Cricket)

Answer any one of the following questions in about 70-80 words:

5x1=5

13. a. *When the jet rose six miles high,
it was clear the earth was round
and that it had more sea than land.
But it was difficult to understand
that the men on the earth found
causes to hate each other, to build
walls across cities and to kill.* (Geography Lesson)

- | | |
|---|-----|
| i. At what height was the jet? | (1) |
| ii. What was clear from that height? | (2) |
| iii. What was difficult to understand from that height? | (2) |

Or

- | | |
|---|-----|
| b. Give a short summary of the poem, "The Ant and the Cricket". | (5) |
|---|-----|

2024
CLASS – VIII (Phase-I)
SCIENCE

Total marks : 40

Time : 1½ hours

General instructions:

- i) Approximately 10 minutes is allotted to read the question paper and revise the answers.
- ii) The question paper consists of 23 questions.
- iii) Internal choice has been provided in some questions. A student has to attempt only one of the alternatives in such questions.
- iv) Alternate question for the visually impaired students are provided in some questions. **Only the visually impaired students have to attempt such alternate questions.**
- v) Marks allocated to every question are indicated against it.

N.B: Check to ensure that all pages of the question paper are complete as indicated on the top left side.

A. Choose the most appropriate answer from the given alternatives:

1. The first step before growing crops is 1
(i) irrigation (ii) sowing
(iii) weeding (iv) preparation of soil
2. Which among the following is the least polluting fuel for a vehicle? 1
(i) Petrol (ii) Diesel
(iii) CNG (iv) Kerosene
3. Menstruation normally occurs once in about 1
(i) 28 to 30 days (ii) 28 to 60 days
(iii) 21 to 60 days (iv) 21 to 90 days
4. The force acting on a unit area of a surface is called 1
(i) gravity (ii) pressure
(iii) friction (iv) magnitude
5. An example of a good conductor of electricity is 1
(i) rubber (ii) wood
(iii) plastic (iv) copper

B. Fill in the blanks:

6. Cutting of mature crop is called _____. 1
7. Petrol and diesel are obtained from a natural resource called _____. 1
8. External fertilization takes place in _____. 1
9. The lower the frequency of vibration, the _____ is the pitch. 1

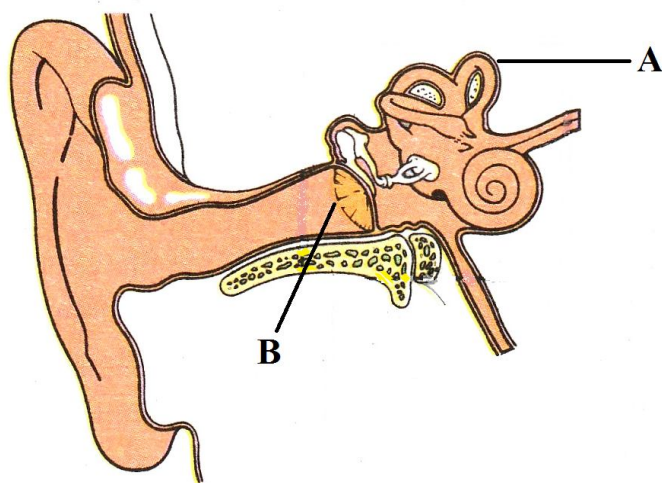
C. Answer the following questions in one word or one sentence:

10. What is irrigation? 1
11. Name the petroleum product which is used for making ointments, candles, vaseline, etc. 1

12. Which parent chromosomes determine the sex of an unborn baby? 1
13. Define atmosphere. 1

D. Answer the following questions in about 10-20 words:

14. Write two advantages of manure over fertilizers. 2
15. Differentiate between inexhaustible and exhaustible natural resources, giving one example each. 2
16. Name the force which pulls down objects towards Earth. How can we make force to come into play? 1+1=2
17. Identify the picture given below and label the indicated parts 'A' and 'B'. 1+1=2



Alternate question for the visually impaired students:

Define frequency. State its unit.

(1+1=2)

18. What is the full form of LED? Why is LED more efficient than a bulb? 1+1=2

E. Answer the following questions in about 30-40 words:

19. a. In the following situations, identify the agent exerting the force and the object on which it acts. State the effect of the force in each case.
- (i) Squeezing a piece of lemon between the fingers to extract its juice.
 - (ii) Taking out paste from a toothpaste tube.
 - (iii) An athlete making a high jump to clear the bar at a certain height. 1+1+1=3
- Or**
- b. Explain contact and non- contact forces with example. (1½+1½=3)
20. a. List any three sources of noise pollution in your surroundings. 1×3=3
- Or**
- b. Differentiate between noise and music with example. (1½+1½=3)
21. In case of a fire, before the firemen use the water hoses, they shut off the main electrical supply for the area. Explain why they do this. 3

F. Answer the following questions in about 50-60 words:

22. Describe the process of fertilization in human beings. **4**

23. **a.** What are sex hormones? Why are they named so? State two functions. **1+1+2=4**

Or

b. Explain secondary sexual characters with examples. **(4)**

2024
CLASS – VIII (Phase-I)
SOCIAL SCIENCES

Total marks : 40

Time : 1½ hours

General instructions :

- i) *Approximately 10 minutes is allotted to read the question paper and revise the answers.*
- ii) *The question paper consists of five (5) categories of questions. All questions are compulsory.*
- iii) *General choice has been provided in 3 marks and 4 marks questions.*
- iv) *Marks allocated to every question are indicated against it.*

N.B: *Check that all pages of the question paper is complete as indicated on the top left side.*

1. Choose the correct answer from the given alternatives:

- (a) The First Anglo-Sikh War was fought between the Sikhs and **1**
 - (i) Lord Auckland
 - (ii) Lord Harding
 - (iii) Lord Wellesley
 - (iv) Lord Dalhousie
- (b) Peshwa Baji Rao II accepted the Subsidiary Alliance and signed the **1**
 - (i) Treaty of Bassein
 - (ii) Treaty of Salbai
 - (iii) Treaty of Mangalore
 - (iv) Treaty of Allahabad
- (c) This monument is a famous tourist attraction in Kolkata representing British architecture. Identify the monument **1**



- (i) St.Paul's Cathedral
- (ii) Writers' Building
- (iii) Victoria Memorial
- (iv) Gateway of India

Note : This question is in lieu of Q 1.(c) for visually impaired candidates only

- (c) Bombay was transferred to the East India Company by the British rule in (1)
 - (i) 1666
 - (ii) 1667
 - (iii) 1668
 - (iv) 1669

- (d) The world's leading producer of tea is **1**
 (i) India (ii) USA
 (iii) Russia (iv) China
- (e) Which of these cities was known as the "Manchester of India"? **1**
 (i) Mumbai (ii) Ahmedabad
 (iii) Bengaluru (iv) Delhi
- (f) Which of the following rights implies that all citizens are equal before the law? **1**
 (i) Right against Exploitation (ii) Right to Freedom
 (iii) Right to Equality (iv) Cultural and Educational Rights
- (g) The Supreme Court consists of _____ and other judges **1**
 (i) one Chief Justice (ii) two Chief Justice
 (iii) three Chief Justice (iv) four Chief Justice

2.a. State whether the following statements are true or false : **1x3=3**

- (i) The Ryotwari Settlement was introduced by Thomas Munroe.
 (ii) Nana Sahib was defeated at Meerut.
 (iii) The Preamble declares secularism as our national goal.

b. Answer the following questions in one word or one sentence not exceeding 15 words: **1x3=3**

- (i) When did Vasco-da-Gama come to India?
 (ii) What is Fort William?
 (iii) How many High Courts have been established in our country for meeting the judicial needs?

3. Answer the questions in about 20-30 words: **2x5=10**

- (i) Why did Robert Clive attack Arkot?
 (ii) Name the important buildings constructed by the British in New Delhi.
 (iii) Define the term 'plantation'.
 (iv) What is mixed farming?

(v) Mention the role of the Public Prosecutor in the judicial structure.

4. **Answer *any three* questions in about 35-45 words.** **3x3=9**

(i) Why were the laws introduced by the British defective?

(ii) State any three reasons for the growth of industries in the 20th century.

(iii) Distinguish between basic industry and consumer industry.

(iv) Write about the Right against Exploitation.

5. **Answer *any two* questions in about 50-70 words.** **4x2=8**

(i) What was the role of the army in the British Empire in India?

(ii) List any four results of the Revolt of 1857.

(iii) Describe the powers and functions of the High Courts in India.

2024
CLASSVIII (Phase-I)
GRAMMAR AND
COMPOSITION

Total marks: 40

Time: 1½ hours

General instructions:

- i) Approximately 10 minutes is allotted to read the question paper and revise the answers
- ii) The question paper consists of 10 questions. All questions are compulsory.
- iii) Internal choice has been provided in some questions.
- iv) Marks allocated to every question are indicated against it.

N.B: Check that all pages of the question paper are complete as indicated on the top left side.

SECTION-A (GRAMMAR)

1. Choose the correct answer from the alternatives given: 1x5=5

- a. A _____ is a group of words that forms part of a larger sentence and has a subject and predicate of its own.
 - i. Phrase
 - ii. Clause
 - iii. Adverb Clause
 - iv. Adverb Phrase
- b. A _____ is one which has only one subject and a finite verb.
 - i. Compound sentence
 - ii. Simple sentence
 - iii. Complex sentence
 - iv. Phrase
- c. _____ does the work of an Adjective, it qualifies a noun or pronoun in the principal clause.
 - i. Adjective Clause
 - ii. Adverb Clause
 - iii. Noun Clause
 - iv. Clause
- d. _____ there is a will, there is a way.
 - i. How
 - ii. Where
 - iii. Will
 - iv. Were
- e. He grows wheat in _____ field.
 - i. he
 - ii. his
 - iii. him
 - iv. it's

2. Rewrite the following sentences as directed: 1x5=5

- a. You must work hard or you will fail. (*State whether the sentence is Simple, Compound or Complex*)
- b. He lives on what little he begs. (*Pick out the Noun Clause*)
- c. Uneasy lies the head that wears a crown. (*Pick out the Adjective Clause*)
- d. He did as I told him. (*Underline the Adverb Clause and state its kind*)
- e. Listen to the instructions carefully. (*Change the sentence from Active to Passive*)

3. Underline the Adverb Clauses in the given sentences: 1x2=2

- a. Take a lamp because the night is dark.
- b. You can sit where you like.

4. Add suitable Noun Clause in the following sentences: 1x2=2

- a. I little knew _____.
- b. It was unfortunate that _____.

5. **Underline the Adjective Clause in the following sentences and state which Noun or Pronoun in the Principal Clause it qualifies:** 1x2=2
- a. God helps those who help themselves.
 - b. The forest through which we travelled was dark and gloomy.
6. **Add suitable Adverb Clauses in the following sentences:** 1x2=2
- a. Work hard _____.
 - b. He ran fast _____.
7. **Change the following sentences from Active to Passive Voice:** 1x2=2
- a. The boys are learning their lessons.
 - b. I forgave him for his mistake.

SECTION- B (COMPOSITION)

8. **Read the passage and answer the questions given below:**

What do you mean by x-ray? X-rays are a form of radiation, similar to light, heat and radio- waves. They are invisible to the human eye and travel in straight lines at the speed of light that is 1,86,000 miles per second. X-rays were discovered by a German named Wilhelm Conrad Rontgen on 8th November, 1895. accidentally. He called the newly discovered form of radiation x-radiation or unknown radiation, as he was unaware of the source of radiation. This discovery of Rontgen rays became a milestone among the scientific community. It ignited the study of the subatomic world and the beginning of modern physics

The rays are able to penetrate materials of great thickness, even up to 11 inches of steel. Although x-rays cannot be seen and are invisible, if it is directed at a screen which has been coated with a special substance, the screen will glow. Radiographs are used by doctors to examine broken bones, to trace articles such as coins or pins etc that may have been swallowed. Engineers use x-rays to examine metals to ensure that they are free from cracks or other defects. X-rays are also greatly used in aviation as they allow the internal structure of the wings and fuselages of aircrafts to be examined without dismantling them.

On the basis of your reading of the passage, answer the following questions:

- a. What are x-rays? 1
- b. Who discovered x-rays and when? 2
- c. Mention two uses of x-rays. 2

9. **Read the poem and answer the questions that follow:**

Seeing Ourselves Clearly

It's difficult to take in the entirety of something
when you are standing inside of it.
Valleys are best seen from peaks.
Mountains from their bases.
The ocean from the shore.
Perhaps this is why we rely on other's eyes
to see ourselves clearly.

Perhaps this is why we struggle to wholly view
who we are.

Fill in the blanks and complete the summary of the poem:

1x5=5

*According to the poet, it is difficult to take the whole view of something when you are
_____ inside of it. Valleys are _____ seen from peaks, _____ from their bases
and the ocean from the _____. Therefore, we often depend on others to see _____
clearly.*

10. Write an essay in about 100-150 words on any one of the given topics:

10

- a. My school life.
- b. Importance of sports and games for students.
- c. My favorite season.

Total number of printed pages : 2

NB-E/M/1

2024
CLASS-VIII(Phase I)
MATHEMATICS

Total marks : 40

Time : 1½ hours

General Instructions:

i) Approximately 8 minutes is allotted to read the question paper and revise the answers.

ii) The question paper consists of 13 questions.

iii) All questions are compulsory.

iv) Internal choice has been provided in some questions.

v) Marks allocated to each question are indicated against it.

N.B: Check to ensure that all pages of the question paper is complete as indicated on the top left side.

Section - A

1. Choose the correct answer from the given alternatives.

- (a) Which of the following expressions is linear? **1**
(i) $x^2 + 1$ (ii) $x^2 - 1$ (iii) $2y + 3$ (iv) $2y^2 + 3$
- (b) In a parallelogram ABCD, $\angle A$ and $\angle B$ are two adjacent angles. If $\angle A = 70^\circ$, then $\angle B$ is equal to **1**
(i) 70° (ii) 90° (iii) 110° (iv) 180°
- (c) The ratio of 10 km/hour to 30 km/hour is **1**
(i) 1 : 3 (ii) 1 : 2 (iii) 2 : 1 (iv) 3 : 1
- (d) The algebraic expression $3x + 2y + 6$ is a **1**
(i) monomial (ii) binomial (iii) trinomial (iv) constant
- (e) The sum of $(a + b + c)$, $(a - b + c)$ and $(a + b - c)$ is **1**
(i) 0 (ii) $(a + b + c)$ (iii) $(3a + b + c)$ (iv) $3(a + b + c)$

Section – B

2. Evaluate $\frac{-4}{5} \times \frac{3}{7} \times \frac{15}{16} \times \left(\frac{-14}{9}\right)$ **2**
3. Solve the equation: $3m = 5m - \frac{8}{5}$ **2**
4. Find the square root of 51.84 by division method. **2**
5. Find the product of $(a^2 + b)(a + b^2)$ **2**

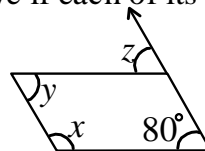
Section – C

6. Simplify and solve the linear equation: $15(y - 4) - 2(y - 9) + 5(y + 6) = 0$ **3**

7. a. How many sides does a regular polygon have if each of its interior angles is 165° ? **3**

Or

b. Find the values of the unknown x , y , z .



8. a. A gardener has 1000 plants. He wants to plant these in such a way that the number of rows and the number of columns remain the same. Find the minimum number of plants he needs more for this.

Or

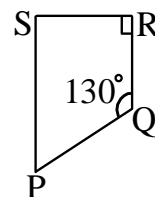
b. Find the smallest whole number by which 1008 should be multiplied so as to get a perfect square number. Also find the square root of the number so obtained.

9. Peter secured 150 marks out of 200 in Mathematics and secured 120 marks out of 180 in Electronics. In which subject did he perform better? **3**

10. Subtract $3a(a + b + c) - 2b(a - b + c)$ from $4c(-a + b + c)$ **3**

Section – D

11. Find the measure of $\angle P$ and $\angle S$ if $\overline{SP} \parallel \overline{RQ}$ in the given figure.



12. a. Find the least number which must be subtracted from 1989 so as to get a perfect square. Also find the square root of the perfect square so obtained.

Or

b. Find the smallest square number that is divisible by each of the numbers 8, 15 and 20.

13. a. During a sale, a shop offered a discount of 10% on the marked prices of all the items. What would a customer have to pay for a pair of jeans marked at Rs 1450 and two shirts marked at Rs 850 each?

Or

b. Alice bought a pair of skates at a sale where the discount given was 20%. If the amount she pays is ₹ 1600, find the marked price.

2024

CLASS – VIII (PHASE – I)

HINDI

Total marks : 40

Time : 1 ½ hours

General instructions:

- i) Approximately 8 minutes is allotted to read the questions paper and revise the answers.
- ii) The questions paper consists of 13 questions. All questions are compulsory
- iii) Internal choice has been provided in some questions.
- iv) Marks allocated to every question are indicated against it.

N.B: Check to ensure that all the pages of the question paper is complete as indicated on the top left side.

SECTION – A (LITERATURE)

1. निम्नलिखित प्रश्नों के उत्तर 20-25 शब्द में लिखिए: 2×2=4

क) आपको किन बातों से लगता है कि आविको और 'पापा' पक्के दोस्त थे ?

ख) नाना जी के अनुसार बीमार पड़ने पर सबसे अच्छा क्या उपाय होता है ?

2. निम्नलिखित प्रश्नों के उत्तर 30-35 शब्दों में लिखिए: 3×2=6

क) हमें वनों से क्या-क्या मिलता है? वन- संरक्षण हेतु वन- महोत्सव कब मनाते हैं ?

ख) भाषा क्या है ? भारत स्वतंत्र कब हुआ ?

‘ अथवा ’

देश को सुखी एवं स्वास्थ्य रखने के लिए किस बात पर ध्यान देना जरूरी है?

3. रिक्त स्थानों की पूर्ति कीजिए: 1×4=4

क) अस्पताल जाने का यह पहला _____ था।

ख) नाना जी ने उनके सिर पर हाथ फेरा और उनके _____ खड़ी हो गई।

ग) भाषा एक _____ व्यवस्था है ।

घ) शासन के लिए _____ की आवश्यकता होती है ।

4. खंड 'अ' के अंशों को खंड 'ब' से मिलाइए: 1×3=3

'अ'

'ब'

- | | | |
|-----------------------------------|---|-----------------------------|
| 1. वन कृषकों के तो | — | उन्मूलन तेजी से हो रहा है । |
| 2. स्वच्छ वातावरण के निर्माण में | — | प्राण है । |
| 3. पूर्वोत्तर राज्यों में वनों का | — | वन की अहम भूमिका होती है । |

5. निम्नलिखित प्रश्नों के उत्तर 20-25 शब्दों में लिखिए: 2×2=4

क) 'हम सब सुमन एक उपवन के' से कवि का क्या तात्पर्य है ?

ख) पुष्प माली से क्या अनुरोध करता है ?

6. रिक्त स्थानों की पूर्ति कीजिए: 1×2=2

क) एक हमारी _____ सबकी , जिसकी मिट्टी में _____ हम ।

ख) एक हमारा _____ हम सब , रहते नीचे एक _____ के ।

7. सही (✓) और गलत (×) का निशान लगाइए: 1×2=2

क) फूल देवताओं के सिर पर चढ़ना चाहता है ।

ख) पुष्प सम्राटों के शव पर चढ़ना चाहता है ।

SECTION – B (GRAMMAR AND COMPOSITION)

8. निम्नलिखित शब्दों के विलोम शब्द लिखिए: 1×2=2

क) गाँव

ख) कसूर

9. निम्नलिखित शब्दों का प्रयोग वाक्यों में कीजिए: 1×2=2

क) ललचाना

ख) गूँथना

10. निम्नलिखित शब्दों के वचन बदलिए:

1×3=3

क) क्यारी

ख) कली

ग) सूत्र

11. निम्नलिखित शब्दों का लिंग बदलकर लिखिए:

1×2=2

क) लड़की

ख) मामी

12. नीचे दिए गए शब्दों का अंग्रेजी में अनुवाद कीजिए:

1×3=3

क) खास

ख) सामाजिक

ग) परवाह

13. नीचे दिए गए शब्दों का हिंदी में अनुवाद कीजिए:

1×3=3

क) Cheeks

ख) Parliament

ग) Wish
