

2025
ENGLISH

Total marks : 80

Time : 3 hours

General instructions:

- i) Approximately 15 minutes is allotted to read the question paper and revise the answers.
- ii) The question paper consists of 18 questions, divided into four sections A, B, C & D.
- iii) Attempt questions based on specific instructions for each part. Write the correct question number in your answer sheet to indicate the option(s) being attempted.
- iv) Alternate question for the visually impaired has been provided in question no.13. **ONLY the visually impaired are to attempt this alternate question.**

N.B: Check that all pages of the question paper are complete as indicated on the top left side.

SECTION-A (Literature)

Answer the following questions:

1. Choose the correct answer from the alternatives given: **1x3=3**
 - (a) *The rumours were confirmed when Morusa's relatives came to ask for her hand and they were readily accepted.* What are the 'rumours' mentioned in this line?
 - A. Mehoviü accepted all marriage proposals.
 - B. Mehoviü will be feasting her friends.
 - C. Morusa could possibly become her suitor.
 - D. Morusa was a famous warrior.

i. Only A	ii. Only C
iii. Both A and C	iv. Both A and D
 - (b) Gandhiji's friend was worried that with all the readings on vegetarianism, Gandhiji might become a _____.

i. crank	ii. vegetarian
iii. gentleman	iv. wealthy person
 - (c) The poem, _____ was a source of inspiration to Nelson Mandela during his years in prison.

i. Daffodils	ii. Ode to Liberty
iii. O Captain! My Captain!	iv. Invictus
2. Explain what is meant by '*balancing black aspiration with white fears*'. (Invictus) **3**
3. How did Morusa realize that he had unknowingly killed his own beloved?

Or

3

What is the 'infatuation' that Gandhiji says lasted for about three months?
4. A trophy is a prized possession and makes its owner proud. Would you consider the possession of a head, a trophy? Why? Why not? Give reasons. (Mehoviü and Morusa)

Or

5

Macbeth visited the witches a second time after the death of Duncan. What did they tell him? How did he feel after he heard the prophecies?

5. **Answer either 5(i) or 5 (ii) or 5 (iii)** 5

(i) Read the lines and answer the questions that follow:

*No head from the leaf-fringed sill
Leaned over and looked into his grey eyes
Where he stood perplexed and still.
But only a host of phantom listeners
That dwelt in the lone house then
Stood listening in the quiet of the moonlight
To that voice from the world of men:
Stood thronging the faint moonbeams on the dark stair,
That goes down to the empty hall,
Harkening in an air stirred and shaken
By the lonely Traveller's call.*

- (a) Why are the eyes of the traveller described as grey? (1)
- (b) 'voice from the world of men'. Whose voice is it? How is it significant? (2)
- (c) Why was he perplexed and still? (2)

(ii) Give the summary of the poem, 'Jina and Etiben'. (5)

(iii) (a) What is the main theme of the poem, 'Death the Leveller' by James Shirley? (5)
Or

(b) Describe the setting of the poem, 'The Windhover'.

6. *'I won't stop him' says he, 'but let you not be afraid. Herself does be saying prayers half through the night, and the Almighty God won't leave her destitute' says he, 'with no son living'.*

- (i) Who is 'he' referred to here? 1
- (ii) Why did 'he' refuse to stop Bartley from going to the Galway fair? 2

7. Was it possible that Michael pushed Bartley off the rocks? Support your answer with logical reasoning.

Or 3

How does Maurya know that they would soon have bad news?

SECTION - B (Reading)

8. **Read the passage given below and answer the questions that follow:**

(1) Once upon a time, in a quaint little village nestled in a picturesque valley, there lived a young girl named Lily. She was known for her adventurous spirit and her deep curiosity. One sunny afternoon, while exploring the woods that bordered the village, Lily stumbled upon a hidden clearing. In the center of this secret meadow, she found an old oak tree with a peculiar nook. In that nook, half-buried in the earth, was a mysterious locket, ornate and gleaming with intricate designs. Lily carefully unearthed it, and as she held it in her hand, she felt a strange connection to this forgotten piece of jewellery.

(2) Back in her cottage, Lily examined the locket more closely. It was made of silver with a hint of gold, and its surface was adorned with delicate engravings of leaves and flowers. On the front, there was an image of a crescent moon, and on the back,

an engraving read, "To the one who seeks the truth." The locket was sealed tightly, and Lily couldn't open it no matter how hard she tried.

(3)Determined to solve the mystery, Lily embarked on a quest to find someone who could open the locket. She asked the village blacksmith, the wise old couple who lived on the hill, and even the town's mayor, but none of them could unlock its secrets. Feeling a bit discouraged, Lily spent her days reading about ancient relics and searching for clues in the library.

(4)One day, while immersed in an old book about mystical lockets, Lily came across a passage that mentioned the existence of a "key of the heart." It said that this key could open the most stubborn of locks, but it was hidden within each person, waiting to be discovered. This newfound knowledge gave Lily a renewed sense of hope and determination.

(5)The next morning, Lily decided to visit the village's recluse, an elderly woman rumoured to have deep knowledge of the heart. The recluse lived in a remote cottage surrounded by a lush garden. Lily knocked on the door and explained her quest. The old woman listened attentively and finally agreed to help. She told Lily that the key to opening the locket was hidden within her heart and that she needed to meditate on her truest desires and intentions.

(6)Lily followed the recluse's advice, sitting beneath the ancient oak tree where she had found the locket. She closed her eyes, focused on her heart's deepest desires, and as she did, she felt the locket warming in her hand. When she opened her eyes, she found the locket had sprung open, revealing a tiny, folded parchment inside. With trembling hands, she carefully unfolded it and read the message: "The truth lies in the journey, not the destination". The mystery of the locket was solved, but Lily realized that the real treasure was the journey of self-discovery she had undertaken. She understood that her quest had led her to understand her heart's desires and the power of her own determination.

- (i) Answer the following questions:
- | | |
|--|---|
| (a) What did Lily find in the nook? | 1 |
| (b) Whom did Lily approach in order to open to locket? | 2 |
| (c) What is the treasure of the locket? | 2 |
- (ii) Answer the questions given below as directed: **1x3=3**
- (a) *When she opened her eyes, she found the locket had sprung open, revealing a tiny, folded parchment inside.* Which of the following is a synonym of the underlined word in the given context? (Para-6)
- | | |
|----------------------|------------------------------|
| i. intricate designs | ii. a stiff written material |
| iii. parcel | iv. carving on a flat rock |
- (b) What was engraved on the locket? (Para-2)
- | | |
|-------------------------------------|------------------------------|
| i. Leaves and flowers | ii. Image of a crescent moon |
| iii. To the one who seeks the truth | iv. all of the above |
- (c) The _____ finally helped Lily to open the locket. (Para -5)
- | | |
|-----------------------|---------------|
| A. village blacksmith | B. Mayor |
| C. recluse | D. old couple |
- Select the correct option.
- | | |
|-------------|------------------|
| i. Only A | ii. Only B |
| iii. Only C | iv. Only A and D |

9. **Read the passage given below and answer the questions that follow:**

- (1) Arundhati Roy was born on 24 November 1961 at Shillong, Meghalaya, India. She was educated at an informal school, Corpus Christi set up by her mother. Later, she spent a few years in a Boarding School in Kerala. She moved to Delhi at sixteen and started living a bohemian life. She lived in a hut in a slum in Ferozshah Kotla for some time and made a living by selling empty beer bottles and by teaching aerobics. She studied architecture in the Delhi School of Architecture but did not complete a degree.
- (2) Arundhati Roy achieved international fame in 1997 with her debut novel, 'The God of small things', which not only garnered large advances from publishers but also earned her the prestigious Booker Prize. 'The God of small things' is based on Roy's childhood experiences in Kerala, where major religions such as Christianity, Hinduism, Islam and Judaism coexist with ideologies such as Marxism. The inspiration for the novel was an image that came to her and that became the central scene of the novel: 'the image of this sky blue plymouth stuck at the railroad crossing with the twins (Rahel and Estha) inside and this Marxist procession raging around it'.
- (3) She has also been an architect, a scriptwriter, an actress, and a journalist and is now well known as an essayist, a forceful speaker, a social activist and a feminist. Her writings are published worldwide, and her speeches at international forums on important issues such as the war in Afghanistan and in Iraq, the environment, big dams, religious fanaticism, and nuclear weapons have made her an influential spokesperson for the world outside Europe and America.
- (4) Arundhati Roy believes that there is no essential difference between fiction and non-fiction, as far as she is concerned, they are two ways of telling stories. The thoroughness of her research, the clarity of her expression, the precision of her language, the conviction with which she articulates her views, and above all, the courage of her convictions are remarkable. Adding to her many accolades, Roy was awarded the PEN Pinter Prize in 2024 for her continuous effort in voicing out her thoughts and telling 'urgent stories of injustice with wit and beauty'.

(i) Answer the following questions:

- | | |
|---|----------|
| (a) How did Arundhati Roy survive as a teenager living in Delhi? | 1 |
| (b) What was the award winning novel, 'The God of small things' about? | 2 |
| (c) What are some of the issues Roy talks about as an influential spokesperson? | 2 |

(ii) Answer the questions given below as directed: **1x3=3**

- (a) Roy, besides being known as a writer and speaker had also worked as _____ . (Paragraph- 3)

- | | |
|-------------------|------------------|
| A. Actress | B. Journalist |
| C. Anchor | D. Developer |
| i. Only A | ii. Only B |
| iii. Both A and B | iv. Both C and D |

- (b) *The conviction with which she articulates her views.* Which of the following is the correct antonym of the word, 'articulate'? (Paragraph 4)

- | | |
|--------------------|------------------|
| i. ineloquent | ii. coherent |
| iii. communicative | iv. intelligible |

- (c) Roy was recently awarded with the _____. (Paragraph 4)
- | | |
|-------------------------|---------------------------|
| i. Booker Prize | ii. Sahitya Akademi Award |
| iii. Sydney Peace Prize | iv. PEN Pinter Prize |

10. **Read the poem carefully and answer the questions that follow:**

Wandering Singers

Where the voice of the wind calls our wandering feet,
Through echoing forest and echoing street,
With lutes in our hands ever-singing we roam,
All men are our kindred, the world is our home.
Our lays are of cities whose lustre is shed,
The laughter and beauty of women long dead;
The sword of old battles, the crown of old kings,
And happy and simple and sorrowful things.
What hope shall we gather, what dreams shall we sow?
Where the wind calls our wandering footsteps we go.
No love bids us tarry, no joy bids us wait:
The voice of the wind is the voice of our fate.

(Sarojini Naidu)

(i) Choose the correct rhyme scheme of the poem.

1

- | | |
|---------|---------|
| a. abbc | b. aabb |
| c. abcc | d. abab |

(ii) Fill in the blanks to complete the summary of the poem:

$\frac{1}{2} \times 6 = 3$

The poem is about the band of folk singers who _____ from town to town and from village to village to spread the message of love through their _____. They roam around various places with _____ in their hands. To them, all men are their relatives and the world is their _____. They sing about the beauty and laughter of women, the ancient kings and battles, which are now dead. They also sing about happy, simple and _____ things. No love can make them go slow or no joy can make them to wait. The voice of the _____ is the voice of their life and also their destiny.

SECTION -C (Writing)

11. Answer **any one** of the following in about 60-80 words:

4

a. You are Grace, the Secretary of the Music and Dance Club of Green Valley School, Tuensang. Write a notice for the school notice board to inform students about the upcoming Musical Night to be held at your school. Give all necessary details.

Or

b. You received an email from your mother who is worried about your health as you have been away at boarding school for almost two months and have not communicated with them. Write down the email that you received.

12. Write a paragraph in about 60-80 words on , ‘Effects of climate change’ using the inputs given: 4

Changes in timing of seasonal event and weather-glaciers retreat- changes in agricultural production- forestry- change in quality of air- food –water-decrease in water resources- change in eco system-ecological imbalance

13. Based on the visual input given below, write on “Internet addiction ” in about 100-150 words: 5



Alternate question only for the visually impaired students: ONLY the visually impaired are to attempt this alternate question. (5)

Based on the inputs given below, write on ‘Value of time’ in about 100-150 words.

Time is precious-cannot be reversed-waits for no one-should not waste-spend it doing something useful-important for everyone-set a time limit-disciplined life-pursue dreams and achieve our goals

14. Answer **any one** of the following in about 200 words: 7
- a. You are Senti, the school captain of Star High School, Mokokchung. Write a letter to the Principal of your school on behalf of the Class X students seeking permission to visit the newly opened Art Exhibition Museum in Kohima, as part of your school’s co-curricular activities.
- Or**
- b. Write an article in about 200 words on the topic, ‘The importance of Tourism to boost the economy in Nagaland.’

SECTION- D (Grammar)

15. Rewrite the given sentences as directed in the brackets: 1x5=5
- (a) I found this pen in the library. Is this _____?
(Fill in the blank with the correct possessive pronoun)
- (b) I play the Cello.
(State whether the underlined word is a transitive or an intransitive verb)
- (c) The child is sleeping soundly on the sofa.
(Underline the phrase in the sentence)
- (d) I _____ cookies yesterday.
(Complete the sentence with a finite verb)
- (e) We must leave early _____.
(Complete the sentence by inserting a suitable clause.)

16. Rewrite the dialogue as reported speech: **1x4=4**
- (a) Kiran: Don't play football in the park!
 - (b) Piyush: My parents will celebrate their 25th Wedding Anniversary next month.
 - (c) Teacher: Don't forget to complete your project work!
 - (d) Aman(to you): What are you reading?
17. Change the voice: **1x3=3**
- (a) I am looked after by my grandmother.
 - (b) The victims of the landslide were rescued by the army.
 - (c) We buy and sell properties here.
18. Rewrite the following sentences using zero conditional clauses: **1x3=3**
- (a) Ram/go out in rain /get wet
 - (b) Mix salt in water /it/dissolve
 - (c) Children play regularly/remain healthy

2025
SOCIAL SCIENCES

Full marks : 80

Time : 3 hours

General instructions:

- i) Approximately 15 minutes is allotted to read the question paper and revise the answers.
- ii) The question paper consists of 19 questions. All questions are compulsory.
- iii) Internal choice has been provided in some questions.
- iv) Marks allocated to every question are indicated against it.
- v) Alternate questions for the visually impaired has been provided in question nos. 1c and 15. **ONLY the visually impaired are to attempt this alternate questions.**
- vi) Write the correct question number in your answer sheet to indicate the option being attempted.

N.B: Check that all pages of the question paper are complete as indicated on the top left side.

1. Choose the correct answer from the given alternatives :

- (a) Socially and politically dominant class in Europe during the mid-eighteenth century was 1
- | | |
|------------------|-----------------------------|
| (i) the nobility | (ii) the landed aristocracy |
| (iii) the church | (iv) the absolute monarchs |
- (b) Arrange the following events in chronological order 1
- | |
|--|
| I. The Geneva Conference |
| II. The Scholars Revolt |
| III. Proclamation of the Socialist Republic of Vietnam |
| IV. Bombing of Hiroshima and Nagasaki |
- Options:
- | | |
|----------------------|---------------------|
| (i) I, IV, III, II | (ii) IV, II, I, III |
| (iii) II, IV, I, III | (iv) III, II, IV, I |
- (c) This Movement was initiated as a protest against the salt tax imposed by the British Government. Identify the event 1



- | | |
|--------------------------|---------------------------|
| (i) Ahmedabad Satyagraha | (ii) Champaran Satyagraha |
| (iii) Kheda Campaign | (iv) Dandi March |

Note : This question is in lieu of Q 1.(c) for visually impaired candidates only

- (c) The leader of the peasants in the Gudem Hills of Andhra Pradesh was (1)
 (i) Baba Ramchandra (ii) Venkata Raju
 (iii) Alluri Sitaram Raju (iv) Motilal Nehru
- (d) Under the Bretton Woods, which of the following systems were established to regulate the International Monetary System? 1
 I. International Bank for Reconstruction and Development (IBRD)
 II. Multinational Corporations (MNCs)
 III. The United Nations
 IV. International Monetary Fund (IMF)
- Options:
 (i) I and IV (ii) II and III
 (iii) I and III (iv) II and IV
- (e) Easter asked Sunday to guess the name of the crop: She provided the following Geographical conditions. 1
 ➤ it grows in well-drained old alluvial soil
 ➤ temperature between 21⁰ C to 27⁰C
 ➤ 140 frost-free days
 (i) maize (ii) rice
 (iii) millets (iv) gram
- (f) A rough drawing of an area based on memory and field observations not based on scale is called a 1
 (i) plan (ii) atlas
 (iii) sketch (iv) map
- (g) Under which list does the subjects Trade Unions and Adulteration fall? 1
 (i) State List (ii) Central List
 (iii) Concurrent List (iv) Union List
- (h) What kind of equality is found in all democracies? 1
 (i) Social equality (ii) Economic equality
 (iii) Political equality (iv) Gender equality
- (i) A village is improving access to clean water, education, and healthcare while promoting organic farming and biodiversity conservation. What type of development approach is the village adopting? 1
 (i) Short-term development (ii) Isolated development
 (iii) Traditional development (iv) Sustainable development

- (j) The circulation of the entire currency (notes + coins) is the responsibility of 1
- | | |
|-----------|----------|
| (i) CBI | (ii) RBI |
| (iii) SBI | (iv) UBI |
- (k) Services of teachers, doctors, lawyers etc. are included in the 1
- | | |
|-----------------------|-----------------------|
| (i) primary sector | (ii) secondary sector |
| (iii) tertiary sector | (iv) all of these |
- (l) Which of the following is not an activity of organized sector? 1
- | | |
|--|---|
| (i) Teacher taking a class in Kendriya Vidyalaya | (ii) A nurse working in a government hospital |
| (iii) A clerk working in the post office | (iv) A farmer irrigating his field |
- (m) When was the Consumer welfare Fund created in India? 1
- | | |
|------------|-----------|
| (i) 1992 | (ii) 1986 |
| (iii) 1955 | (iv) 1937 |
- (n) The process in which the quality of a food substance is lowered through the addition of another substance is called 1
- | | |
|----------------------------|-------------------------|
| (i) mixing two substances | (ii) adulteration |
| (iii) sub-standard quality | (iv) duplicate articles |
- (o) The first missionary to the Nagas was 1
- | | |
|-----------------------|-------------------------|
| (i) Rev. Nathan Brown | (ii) Rev. O. T. Cutter |
| (iii) Rev. E.W. Clark | (iv) Rev. Miles Bronson |
- (p) Which crop of Nagaland hold the distinction of being the first to be awarded the GI registration? 1
- | | |
|---------------------------------------|--------------------|
| (i) Naga tree tomato | (ii) Naga cucumber |
| (iii) Naga king chilli or Naga mircha | (iv) Naga cabbage |

Answer the questions in about 20-30 words :

2. Mention any two measures taken by the French to help in developing the economy of its colony in Indochina. 2
3. List any two features of Multinational Corporations (MNCs). 2
- 4.a. State two benefits of rainwater harvesting. 2
- Or**
- b. Write two advantages of airways.

- 5.a. What is the meaning of patriarchal society? 2
Or
- b. Mention two major objectives of a federal government. 2
6. Differentiate between a ruling party and an opposition party. 2
7. Give two reasons why democracy is considered a better form of government. 2
- 8.a. State two ways in which good health contributes to economic development. 2
Or
- b. What is 'Consumers International'? When did the United Nations adopted the UN Guidelines for Consumer Protection? (1+1=2)
9. Mention any two branches of horticulture in Nagaland. 2

Answer the questions in about 50-70 words:

- 10.a. What is commercial farming? Mention three characteristics of commercial farming. 1+3=4
Or
- b. Why is the development of manufacturing industries considered a measure for assessing the economic strength of a country? (4)
- 11.a. Describe the influence of politics on caste system. 4
Or
- b. Describe any four measures taken to decentralize power in India. 4
- 12.a. What are the characteristics of a political party? 4
Or
- b. Explain the factors that sustain democracy in India. 4
13. Read the source/passage given below and answer the following questions that follows:

Influence of Culture on Nationalism

Culture plays a pivotal role in shaping nationalism. Cultural symbols, rituals, and traditions serve as powerful tools for cultivating nationalism. For instance, national holidays, such as Independence Day or Republic Day, are occasions where communities come together to celebrate their shared heritage and commemorate significant historical events. These rituals not only reinforce a sense of belonging but also instill pride and unity among citizens. Moreover, cultural narratives and myths contribute significantly to the construction of national identity. Historical narratives, folklore, and legends often portray a glorified version of the nation's past, emphasizing heroic deeds and sacrifices made by ancestors. These narratives not only evoke a sense of pride but also create a collective memory that binds individuals together as part of a shared

historical continuum. However, while culture can be a unifying force, it can also be a source of division and conflict within nations. Cultural diversity within a nation can sometimes lead to tensions between different ethnic, linguistic, or religious groups vying for recognition and representation. In such instances, competing cultural identities may challenge the notion of a singular national identity, leading to conflicts over power, resources and representation. In conclusion, culture exerts a profound influence on nationalism by providing the foundation upon which national identities are constructed and sustained.

Questions:

- i) Mention one occasion where communities come together to commemorate significant historical events. 1
- ii) What do historical narratives, folklore, and legends often portray? 1
- iii) How can culture be a source of division and conflict within nations? 2

14. Read the source/passage given below and answer the following questions that follows:

Consumer Awareness

Consumer awareness is a fundamental aspect of modern societies, crucial for safeguarding the rights and interests of individuals in the market place. It refers to the level of understanding and knowledge that consumers possess regarding their rights, responsibilities, and choices as buyers of goods and services. In today's complex and dynamic global economy, where consumers are bombarded with a myriad of products and advertisements, being informed and vigilant is more important than ever. At its core, consumer awareness empowers individuals to make informed decisions about the products and services they purchase. This includes understanding factors such as product quality, safety, pricing, and the credibility of the companies they engage with. By being aware of their rights, consumers can demand transparency and accountability from businesses, thereby fostering fair competition and driving improvements in product standards and customer service. One of the key components of consumer awareness is knowledge about consumer rights and legal protections. Laws and regulations exist in most countries to protect consumers from deceptive practices, fraud, and exploitation. These include laws governing product labeling, advertising standards, warranties, and consumer contracts. Awareness of these rights enables consumers to assert their legal protections when necessary and seek recourse in cases of unfair or unlawful treatment. Education and information dissemination are key strategies for promoting consumer awareness. Government, consumer advocacy groups and non-profit organizations plays important roles in providing resources, conducting consumer education campaigns and advocating for policies that protect consumer rights.

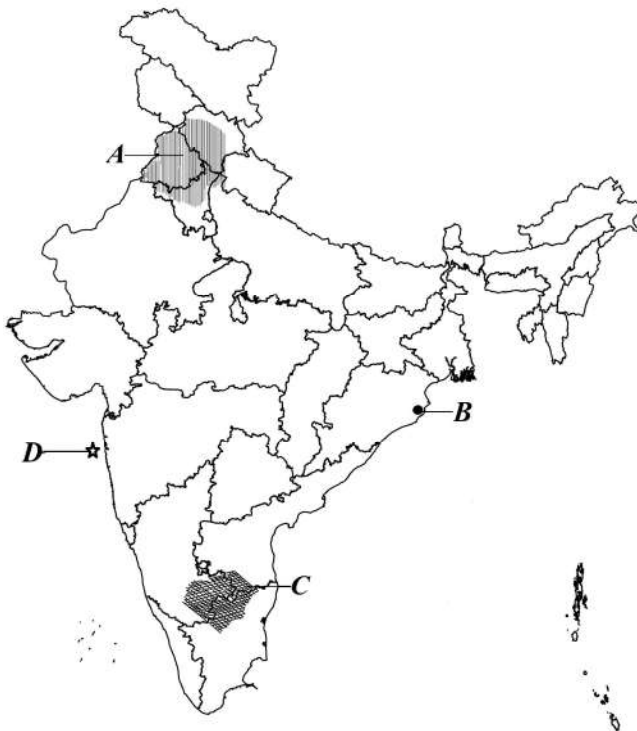
Questions:

- i) How does consumer awareness empower individuals to make informed decisions? 2

- ii) What are the key strategies for promoting consumer rights? **1**
- iii) Give examples of laws to protect consumers from deceptive practices, fraud and exploitation. **1**

15. On the given political map of India, four features A, B, C, D have been indicated. Identify these features with the help of the information mentioned below and write their correct names against the given letters. **4**

Red and Yellow soil
Mumbai High Oil field
Major wheat producing area
Paradip sea port



Note : The following questions are for visually impaired candidates only in lieu of Q 15.

- i) What is a dam? (1)
- ii) What is a natural gas? (1)
- iii) Name two rabi crops. (1)
- iv) Where is the deepest land locked port in India? (1)

Answer the questions in about 80-100 words:

- 16.a. The period between 1830-1848 is termed as the 'Age of Revolutions'. Elucidate.

Or

6

- b. Describe the main features of the Cabinet Mission Plan.

17.a. Describe the importance of coal as a source of energy.

Or

6

b. State six reasons why road transport is more useful than rail transport in India.

18.a. Describe the evolution of money as a medium of exchange.

Or

6

b. Explain how public sector contributes in the economic development of a country.

19.a. Mention any six strategies for conservation of biodiversity in Nagaland.

Or

6

b. Briefly explain any three indigenous games of Nagaland.

2025
SCIENCE

Total marks : 80

Time : 3 hours

General instructions:

- i) Approximately 15 minutes is allotted to read the question paper and revise the answers.
- ii) The question paper consists of 23 questions in 4 Sections. Marks allocated to every question are indicated against it.
- iii) All questions are compulsory in 1 and 2 marks questions (Section A and B).
- iv) Internal choice is given in 3 and 5 marks questions (Section C and D). A student has to attempt only one of the alternatives in such questions.
- v) General choice is given in 5 marks questions. A student has to attempt only 4 questions from this Section-D.
- vi) Alternate questions for the visually impaired students are provided in some questions. **Only the visually impaired students have to attempt such alternate questions.**
- vii) Write the correct question number in your answer sheet to indicate the option being attempted.

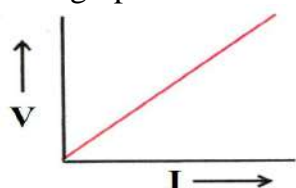
N.B: Check to ensure that all pages of the question paper are complete as indicated on the top left side.

SECTION – A

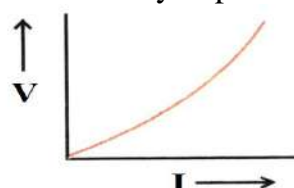
1. Choose the correct answer from the given alternatives:

- | | |
|---|---|
| (i) With the increase in OH^- ion concentration, the pH value will | 1 |
| (a) increase | (b) decrease |
| (c) remain constant | (d) fluctuate |
| | |
| (ii) The most ductile metal is | 1 |
| (a) gold | (b) silver |
| (c) copper | (d) mercury |
| | |
| (iii) Which of the following is the correct arrangement of the given four metals in the decreasing order of their reactivity? | 1 |
| (a) $\text{Al} > \text{Zn} > \text{Mg} > \text{Fe}$ | (b) $\text{Mg} > \text{Al} > \text{Zn} > \text{Fe}$ |
| (c) $\text{Fe} > \text{Zn} > \text{Al} > \text{Mg}$ | (d) $\text{Zn} > \text{Fe} > \text{Al} > \text{Mg}$ |
| | |
| (iv) Which of the following is a saturated hydrocarbon? | 1 |
| (a) Ethane | (b) Ethene |
| (c) Pentene | (d) Pentyne |
| | |
| (v) The number of covalent bonds in C_3H_8 is | 1 |
| (a) 6 | (b) 8 |
| (c) 10 | (d) 12 |
| | |
| (vi) Cramps in our muscles during sudden activity is due to the conversion of | 1 |
| (a) pyruvate to ethanol | (b) pyruvate to ATP |
| (c) pyruvate to lactic acid | (d) glucose to pyruvate |

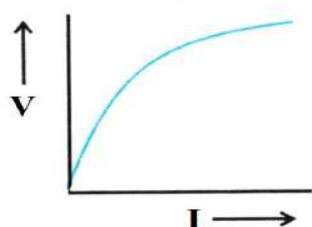
- (vii) Growth in all organs is stimulated by the growth hormone secreted by the 1
 (a) pituitary gland (b) adrenal gland
 (c) pineal gland (d) hypothalamus
- (viii) The plant that was used by Mendel for his experiments is 1
 (a) gram (b) mustard
 (c) hibiscus (d) garden pea
- (ix) Which of the following can be inherited from parents to offspring? 1
 (a) Driving skill (b) Knowledge
 (c) Free earlobes (d) Scar
- (x) An object is placed between F_1 and $2F_1$ of a convex lens, the image will be formed 1
 (a) at F_2 (b) at $2F_2$
 (c) beyond $2F_2$ (d) between F_2 and $2F_2$
- (xi) The function of iris in the human eye is to 1
 (a) control the size of the pupil
 (b) adjust the focal length of the eye lens
 (c) control the amount of light entering the eye
 (d) detect and convert light into electrical signal
- (xii) The V-I graph for a nichrome wire which correctly depicts Ohm's Law is 1



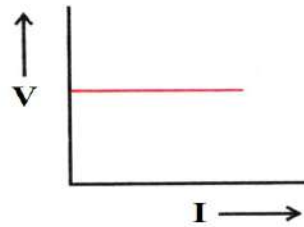
(a)



(b)



(c)



(d)

Alternate question for the visually impaired students:

According to Ohm's law, the potential difference across the ends of a given metallic wire in an electric circuit is (1)

- (a) directly proportional to the time of flow of current
 (b) directly proportional to the current flowing through it
 (c) inversely proportional to the time of flow of current
 (d) inversely proportional to the current flowing through it
- (xiii) If the current flows from North to South in a straight conductor, the direction of the magnetic field line will be 1
 (a) clock wise (b) anti-clock wise
 (c) south to north (d) north to south

- (xiv) In 1987, an agreement was formulated by the United Nations Environmental Programme (UNEP) to freeze the population of 'X' to prevent depletion of 'Y'. The 'X' and 'Y' referred here are respectively **1**
- (a) ozone and CFC's (b) CFC's and UV rays
(c) CFC's and ozone (d) UV rays and CFC's
- (xv) The phenomenon in which non-biodegradable pesticide get accumulated progressively at each tropic level is known as **1**
- (a) pollution (b) biogenesis
(c) biological magnification (d) biodegradation

SECTION - B

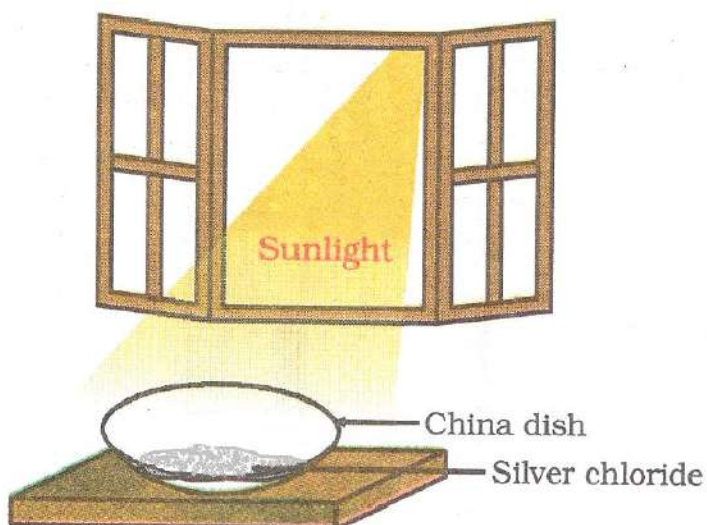
Answer the following questions in about 20-30 words:

2. What is a skeletal chemical equation? Why is it necessary to balance chemical equations? **2**
3. Write two advantages of using detergents as cleansing agents over soaps. **2**
4. What are the ways in which water is transported in plants? **2**
5. Give two limitations of electrical impulse in transmission of information in animal body. **2**
6. What happens to the lining of uterus:
(i) after fertilization, before receiving the growing embryo?
(ii) if no fertilization occurs? **2**
7. State Fleming's left hand rule. **2**

SECTION - C

Answer the following questions in about 40-60 words:

8. a. In the experimental set up shown below, white silver chloride is taken in a china dish and kept in sunlight for some time.

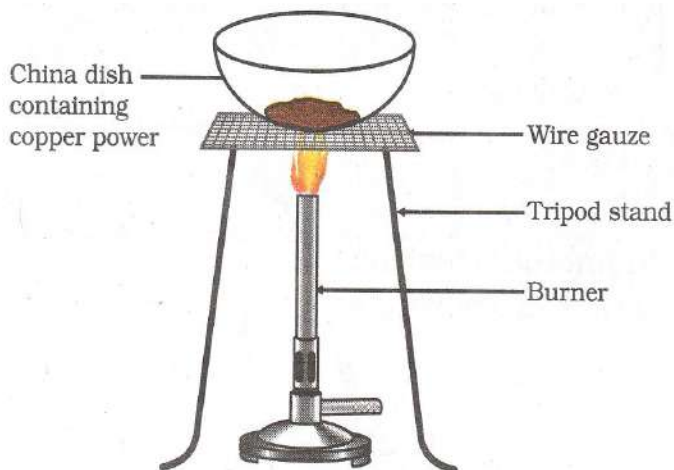


Answer the following questions based on the experiment above:

- (i) What colour change is observed in the silver chloride?
 (ii) What is the type of reaction that has taken place? Give reason. **1+2=3**

Or

- b.** In the given experimental set up, when brown copper powder is heated, the surface of the copper powder becomes black.



Answer the following questions based on the experiment above:

- (i) Identify the type of reaction. Give reason.
 (ii) When hydrogen gas is passed over the black copper powder, what will be observed? **(2+1=3)**

Alternate question for the visually impaired students:

What is meant by rancidity? Mention two techniques to prevent rancidity. **(1+2=3)**

9. **a.** A white solid mass is seen fixed on the fractured bone by doctors.

- (i) What is the name of the white solid mass?
 (ii) Write its chemical formula.
 (iii) Give one more use of the white solid mass. **1×3=3**

Or

- b.** Write the chemical equation to show how bleaching powder is produced. Give two uses of bleaching powder. **(1+2=3)**

10. **a.** What is a homologous series? Write any two characteristic features of homologous series.

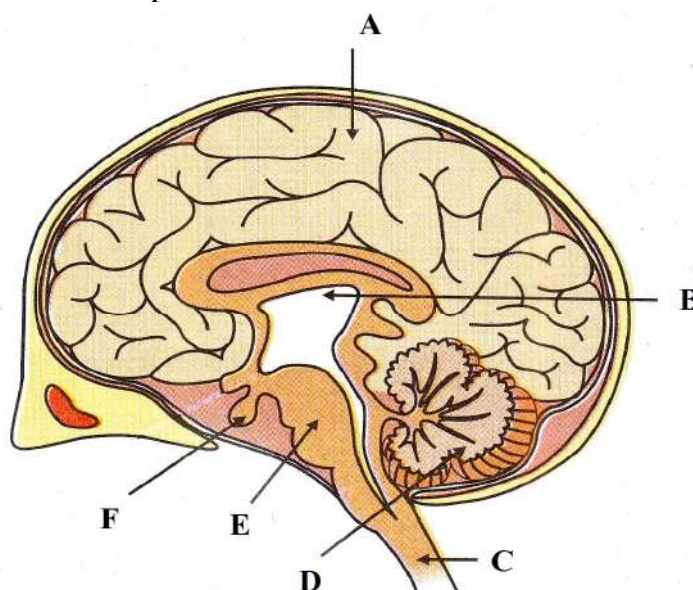
Or

1+2=3

- b.** What is esterification reaction? Give two uses of esters.

11. Label the indicated parts of the human brain.

6×½=3



Alternate question for the visually impaired students:

Write any one function each of the fore-brain, mid-brain and hind-brain.

(1×3=3)

12. Explain how the sex of a child is determined in human beings. 3
13. Bokato went on a hunting trip to his village during his summer vacation. He tried to make fire on a hot day by using a lens on a paper.
(i) Name the type of lens he used and why?
(ii) Give one more application of this type of lens used in our daily life.

2+1=3

14. a. An object 5cm in length is placed at 20cm in front of a convex mirror of radius of curvature 30cm. Find the position of the image, its nature and size.

Or

3

- b. A concave lens has focal length of 15cm. At what distance should the object be placed so that it forms an image at 10cm from the lens? Also, find the magnification produced by the lens.

Alternate question for the visually impaired students:

Define reflection of light. State the two laws of reflection of light.

(1+2=3)

15. Explain the following:
(i) Why is tungsten used almost exclusively for filament of electric lamps?
(ii) Why are the conductors of electric heating devices, such as bread-toasters and electric irons, made of an alloy rather than a pure metal?
(iii) Why are copper and aluminium wires usually employed for electricity transmission?

1×3=3

16. **a.** In Lithrongla's grandmother's house, two lamps, one rated 100W at 220V and the other 60W at 220V are connected in parallel to the electric main supply. What current is drawn from the line if voltage is 220V?

Or

3

- b.** The electric refrigerator in Asen's house, rated 400W operates for 8 hours/day. What is the cost of the energy to operate it for 30 days at ₹5.60 per kWh?

Alternate question for the visually impaired students:

According to Joule's law of heating, what are the three factors on which the heat produced in a resistor depends? (3)

17. What is earth wire? Why is it necessary to earth metallic appliances? **1+2=3**
18. Hornbill Festival of Nagaland is a major event which attracts not only domestic tourists but also international tourists. Throngs of people flood the state during this festival time. Reports have shown that it has raised the economy of the state, at the same time it has contributed to environmental problems. What three suggestions would you make to the Government of Nagaland to solve the environmental problems? **1×3=3**

SECTION - D

Answer any 4 questions from the following questions (19 to 23) in about 70-100 words:

19. With the help of a neat and labelled diagram, explain the electrolytic refining of copper. **2+3=5**

Alternate question for the visually impaired students:

What are ionic compounds? Give four properties of ionic compounds. (1+4=5)

20. **a.** Draw a labelled diagram of the human alimentary canal and explain ingestion of food in mouth and digestion in stomach in human beings.

Or

2+3=5

- b.** Draw a labelled structure of the human heart and explain the flow of blood through the heart.

Alternate question for the visually impaired students:

Explain the process of nutrition in human beings. (5)

21. Explain any five modes of reproduction by single organisms. **1×5=5**

22. John is studying in class X. One day, the science teacher took John's class to see the State Museum in Kohima. The students saw three mirrors which gave different images of their body-

- Mirror A gave an enlarged size of the body.
- Mirror B gave the same size of the body.
- Mirror C gave a diminished size of the body.

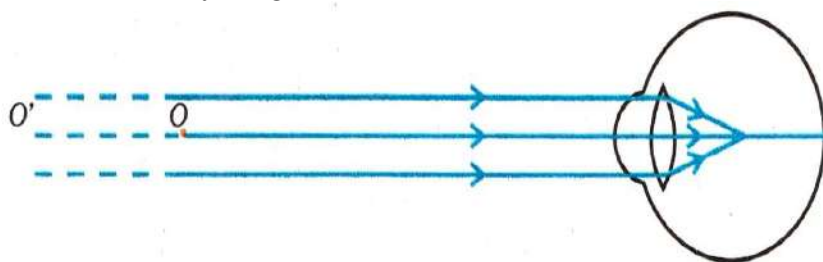
Based on the above observations, answer the following:

- (i) What type of mirror is Mirror A?
- (ii) What type of mirror is Mirror B?
- (iii) What type of mirror is Mirror C?
- (iv) Which among the three mirrors is also used as a rear view mirror for drivers in vehicles?
- (v) Which among the three mirrors is also used by dentists? **1×5=5**

23. a. Explain dispersion of white light by a glass prism with the help of a diagram. **3+2=5**

Or

- b. Given below is the ray diagram of a defect of vision in human beings.



- (i) Identify the type of defect of vision in the above figure.
- (ii) Write two causes of this defect of vision.
- (iii) What type of lens is used for correction of this defect?
- (iv) Draw a ray diagram to show how this defect is corrected by using the suitable type of lens. **(1+2+1+1=5)**

Alternate question for the visually impaired students:

Write one cause of presbyopia. What are its two defects and how can it be corrected? **(1+2+2=5)**

2025
TENYIDIE

Total marks: 80

Time: 3 hours

General Instructions :

- i) *Approximately 15 minutes is allotted to read the question paper and revise the answers.*
- ii) *The question paper consists of 24 main questions.*
- iii) *Internal choice has been provided in some questions.*
- iv) *Write the correct question number in your answer sheet to indicate the option being attempted.*

N.B: *Check that all pages of the question paper are complete as indicated on the top left side.*

SECTION – A (Kesi Mhaphrü)

1. Thedze phrülie di ketsokecü hako kelashülie:

We u kelhou nu keshürho ha se morosuo phre. Themiae shükeiraka, kishükinyi kekra se lhou ketheguo balie vi derei puoe keshürho süko se khrülieya mo. Darubabumia ki keshürho chathako kekhuohilie vi derei keshürho ha manyamhara kemhie zo di ketsükeزالie lho tsiu khrükelie vie mo. Mia puoe puo shürho rüguo mu se menuo bakelie geinu shürho balietuo.

Keshürho ha kepenuopfü khapie u ketsü puo. U shürho ha u chü u mo mu u kele kemedoko pete bopfü ba. U shürho bu puotou balieketuoe, we kecüca cükecü-umo la se morokesuo kecücako, u chü u mo kezakecü, kemesa pie u zho chükecü, rülei mu ze menuokelie. We suokelie ki kechüki nu vo u meho di kishükinyi pepakewa ze nu u shürho ha u kinyi zo ükecü silieya. Mesakecüe u shürho la mha kemeyietho puo zo. Teisonhie dzürülukücü, mhacümhakriekücü mhdzü u dzie meteiekücü, khunhie va kenie uhu kezükücü, teisonhie u pfhenei valiekücü hako se u zho chülie morosuo.

Kishükinyi kekra kenguse ba shierei kechükennyü kere silie lho keprei u ki kevor nhie süko mhatho kemo chütaya. Themiae shürho ba ro puo nei baya, shürho di u kele puotoukücü nunu mha kevi rhü mu chüketuo sie mha kevi chüshülie vi. Nyi mu rüü di lhou u theguo chü zo mo rei thiethie va tsopfhü mo di shürho keba sie kedithede thenou rüü mu ketheguo shi! Themia kekra keshürho ca kemeyie silie mo di u ca u krie nu keyiekewa nyi tsiu ketheguolie mu ketheguo sa nyünyü, nyilie mu nyi sa nyünyü idi kemehoukemengu-u bu u kelhou pevokewa nyi phite. We u thuo u la kevi le di keshürhoe themianuo la puoma rethor ücü si di u shürho se menuolie morosuo kekreamonyü keshürhoe u kinyi zo. Khunhie theruokesuo hieshiehieruo puo u ki kevor ze mhale meheimelozhü rei u shürho tuo mota tse mhapuorei chülie suotatuo mu mha pete le u dzükezei chü vortalie vi.

Dicako donu puotou-u kedapie thushülie:

a. U kelhou nu kedipuo se morosuo phre ga?

1

(i) Keshürho

(iii) Kishükinyi

- | | | |
|---|---------------------|-------|
| (ii) Shükeiraka | (iv) Kechükenyü | |
| b. Suomia ki keshürho chatha kekhuohilie vi ga? | | 1 |
| (i) Kepethamia | (iii) Phichümia | |
| (ii) U krü | (iv) Darubabumia | |
| c. Keshürho-e u _____ zo. | | 1 |
| (i) Kenei | (iii) Kevi | |
| (ii) Kinyi | (iv) Theguo | |
| d. U shürho-e hau sa pu ba. | | 1 |
| (i) U ki u lie | (iii) U kele kemedo | |
| (ii) U manyamhara | (iv) U pfhe u nei | |
| e. _____ kelie geinu shürho balieya. | | 1 |
| (i) Mhanyi | (iii) Mhajü | |
| (ii) Mesakelie | (iv) Mhasi | |
| f. Dzukezei kepetsou thushülie. | | 1 |
| (i) Ketheguo | (iii) Shürho | |
| (ii) Ziekecü | (iv) Dzukezie | |
| g. Thedze nu cayieu thushülie. U shürho tuo mota tse kimhie votatuo üsi ga? | | 1+1=2 |
| h. Themia kekra kimhie di u kelhou pevowaya ga? | | 1+1=2 |

SECTION – B (Thedze Kezo)

2. Hanie puo (1) kedapie dieca krie puo nunu krie di hiepengou (100 – 150) mese nu thushülie.

- a. Noe n rüna nu leshükephrünuoko krotho nu rüzhütsatie keseu mu süla n rüna rüzhünya tsopfhükeba la sorkari kitsa rüzhütsatie kezhaui ki rüzhü nya huo kesepie kephrünuoko khruohishünükecü kecha dzeyie puo thushülie. 6

Moro

- b. N leshüki nu Tenyidie chükehieketuo la kehou puo kesekeshü mhathochie puo pebalie. Süla kimhie di pebalie shiü rükhuo mhathu thushülie.

3. Hanie puo (1) kedapie dieca hiepengou (50) mese nunu thushülie.

- a. Noe Nagamia kephrünuoko krotho-u nu kehoukrüta (President) chü ba. Krotho pesiekelie teicie hiepengou (50) tseilieketu nyiu nu kephrünuoko bu vor kepekro phreshü nu kethezhokecü phreikiepuo thupie kezashülie. 4

Moro

- b. Khrietho kenie tsie teiu nu mobile fon puo kevi mu puo kesuo dze kerüchü keba rüchü die puo thushülie.

SECTION – C (Diezho mu Thuyie)

4. Die puotou-u kedapie thushülie: 1x5=5

- | | |
|------------------------------|--------------|
| (a) Vor ketuo dze pesikeshü- | |
| (i) puya | (iii) puzhie |
| (ii) putuo | (iv) puwa |

- (b) Tenyidie nu dietho kepe kitsuo ba ga?
 (i) 3 (iii) 5
 (ii) 4 (iv) 6
- (c) Mhapuo sedeketuo thashüyakezhau liro-
 (i) tsa (iii) nu
 (ii) ra (iv) vü
- (d) No mia vie rügu laluo _____?
 (i) memu (iii) shi
 (ii) ya (iv) ro
- (e) Puo vor di tuote. Dielou kiu diekhe nu ba ga?
 (i) Vor (iii) Di
 (ii) Tuote (iv) Puo
5. **Dieca 'we' hau se puoca kenyi diecha mu diemei diecha puopuo chüshülie.** 1+1=2
6. **Zatsekhu $\frac{1}{3}$ hau dieca nu thushülie.** 1
7. **Dieca puokru tou-u pie rhiephi (-) kesedo thashülie.** 1
 _____ nha liecü tuo.
8. **Diesou hako puoca thushülie.**
 a. Pepupelou 1
 b. U so u mia 1
 c. Süsüoyo 1
9. **Diekhu mu dierozu kekrü kebako thu kemezhüshülie.**
 a. U melu kesuomia u se mhodzü va kekrasiaya. 1
 b. Kijüthou ko zievi se ba. 1
 c. Mha kesuo kramiemiata zhie. 1
10. **Diecha hako thuyie chüpie Tenyidie nu khashülie.** 1x5=5
 a. Shut the front door please.
 b. Whose book is this?
 c. She did not cheat on the exam as it was the wrong thing to do.
 d. Stop biting your fingernails.
 e. Be quiet now!
- SECTION – D (Diemvü)**
11. **Diecako donu puotou-u kedapie thushülie:** 1x5=5
- (a) Kedi mu Tsathouyo unie keze tase chatuo kitsuo nu vota ga?
 (i) Thenie (iii) Kerekenie
 (ii) Hiethenie (iv) Serekenie

(b) Chüterhü kenye ki themiako suomia ketuo chatsa tuo nyüya ga?

- | | |
|-----------------|---------------------|
| (i) Kethepfumia | (iii) Kenyimia |
| (ii) Kekuomia | (iv) Terhü miavimia |

(c) Martin Luther King kiciepuo Noble Prize ngulie ga?

- | | |
|-----------|------------|
| (i) 1964 | (iii) 1934 |
| (ii) 1974 | (iv) 1944 |

(d) Pu hu lholie n kezie ratsa _____ vi kesokezie.

- | | |
|-----------------|-------------------|
| (i) yharhayayhu | (iii) yharayhayhu |
| (ii) yharayhayu | (iv) yharhayayhu |

(e) Kemo chalie hara tuo thienyü.

- | |
|------------------------------------|
| (i) Kesuo we jü lhou rü huwo-o |
| (ii) Nha mezü rho cha meluo nu kha |
| (iii) Zo zhütuo mu hatsa tsurüluo |
| (iv) Kezha ki we kenienue pie chü |

Ketsokecü hako donu sorou (6) kedapie dieca 20 – 25 mese nunu kelashülie : 2x6=12

12. Kedipuo la kijüthou kerükrieu za pie kedieutsükerü chüwata ga?
13. Vihienue puo zuo va nu ketuo ki kimhie tuoya üsi ga?
14. Dunant mhatho therietho-u kedipuo ga?
15. Dr. Martin Luther King themia kimhiecü puo ga? Puo kedipuo se chüta ga?
16. Kezise puo nuonue mia kitsuo nyi ga? Supuo mezeirü khou doupie chü ga?
17. Nie pie penue geizo nu kedipuo la puo nuo-u pie teiziepfü ze kemejüshü ga?
18. Rütsohouü puo thuo puo pie kedipuo ze kemejüshü ga?

Ketsokecü hako donu kenie (2) kedapie dieca 40 – 50 mese nunu kelashülie : 4x2=8

19. “Tsathou, no rüna kerekenie nunu vor mu kerekenie die rei kesiu, no whi ketuo ki thenu kezivi a kemhie huo ngu me?”
 - i. Kedipfü kimhie di par tsathouyo ki die hau ketsoya ga? (2)
 - ii. Tsathouyo thela nu kedipuo se kedipfü die kelashü ga? (2)
20. Kiüdi keziu tshü tsia ngu re seta ga? Supue tshü tsia khapie puo tsü ga? Kezise-e tshü krie kitsuo thelie üsi ga? (2+1+1=4)
21. Niaki ha supuo mhatho üdi pu ga? Mu puo-e kedipuo chü sei zhü rei puo nyietaya kemo pushü ga? Niaki geizo-u nu ükezopfüe ‘Niaki’ üse puo rhi kimhie üdi pushü ga? (2+2=4)

Ketsokecü hako dieca 60 – 90 mese nunu kelashülie:

22. a. Thuophi di kedipuo silieya ga? Krase dzeu nunu thiedzü phichümia kelhou teiu ca
kenie se tsiedo kelhouzho kenie ze kemejüshülie. **1+4=5**

Moro

- b. *‘Puo kediü ze keselie moketa la lata mo, derei puo mha kezha se chü morokesuo
puo mhodziütsatie kezhi ngulie di thechü sünu ba di kechiiko thekevü.’*
- i. Dieca hanu ‘Puo’ iciü supuo pu ba ga? (1)
- ii. Puo kedipuo la kediü ze kesetuoü vor ga? (2)
- iii. Puo mhatho kezha chü morosuoketa hau kedipuo pu ba shi thushülie. (2)
23. “Thevünüo puo mia sieshükewa.
Puo krü jü di mecu niaki krü
Kebayo we a kelhou mhielie.”
- i. Diecha hako geizo kiu nunu se par ga? **1**
- ii. ‘A kelhou’ hau supuo kelhou puba ga? **1**
- iii. Diecha hako kedipuo ca puba shiü thushülie. **3**
24. a. Nie pie penuo geizo hau thedze rhi nunu thushülie. **5**

Moro

- b. *“Ruopfü teiso vajokewa sie
Sümia keka pu hukelie jü
Kijü hau mha üya liro
Phou hau ki la vo teigei we.”*
- i. Ruopfü teiso hau kedipuo pu ba ga? (1)
- ii. Sümia keka iciü hau suomia keka dze pu ba ga? (1)
- iii. Diecha hako geizo kiu nunu se par ga? (1)
- iv. Geizo diecha hako puoca vatshashülie. (2)

2025
AO

Total marks: 80

Time : 3 hours

General Instructions :

- i) *Approximately 15 minutes is allotted to read the question paper and revise the answers.*
- ii) *The question paper consists of 22 main questions.*
- iii) *Internal choice has been provided in some questions.*
- iv) *Write the correct question number in your answer sheet to indicate the option being attempted.*

N.B: *Check that all pages of the question paper are complete as indicated on the top left side.*

SHILEM – A (Rajem Latang)

1. Teküpoklen agüja alibaji junga züngang aser tasüngdangbatemji langzüang:

Moatsü tetezü Temoatsü meshiba Lijaba Tsüngrem dang temoatsü meshia külemba benjung. Aor asoshi Moatsü mongya tematiba ka ama metsüngareta, anembonga Lijaba dang süngjanglijang tajung jenti moajang ta obula nunger mapang benjung monga aru. Moatsümong ya küm shia alu nung metsüjang tabensa peroka renema yur meyitsüngküm mapang tetenzüklen monga liasü. Iba benjung atema mapang matongdang jilia nashi-ak kibong balala nung Arju nungertemi metsüa yua liasü aser benjong anasa süng o Tzü apok peria bendena anogo teroknü tashi benjung yimya balala nung obula nungeri Moatsü among.

Moatsümong mezügnü Arju nungertemi Arju Kima süng, tzü, marok, taki, Tzüshi aser aam teperi lepa benjung nung nüngdakba osettsüset ajak bendena liasü. Arju kima sabang nashi-ak tepseta awazütsü yanglu. Ano Moatsü tongshi aou tulu talang telen ajak merükmerüka nok agi jakdoker Arju kima aser tema yua liasü.

Tanübuba nung nashi-ak bendena temetsür kidangi shi pangnem den yi tajungtiba agüja, shir kibongi tajungba anepaluteter toktepa Arju nungertem peladakja benjung longsotepa Arju kima shi aontemji amshia liasü. Moatsü benjung ya Arju nungertemi telutiba shilem agia takok ngudakja liasü.

Tasemnübuba ya benjung tendi nü. Iba anogo nung Arju nunger asangurtemi aoulaki toktepa tuteptsü. Mezüng kangteptsü aser Ar atsüteptsü. Iba sülen zünga zünga akang tembar nokleptsü peii yanglutetba sempet agütsüteptsü aser pei züngatsür nüknürar nem mokopong tajungtiba yanglua agütsütepa liasü. Iba sülen pei züngatsür den kimen kidang benjung chiyong achitsü. Nikongtsütsü yar tsüngsanga tamburtemi ken den yimdong nung longsotepa tangazüktsü aika lanurtem dang sayua liasü.

Pezünübuba nung tamburtem pei ataba süoshi agir yimdong süa Moatsü ken tena tsüingsanga jajatsü aser kibong palalai kimak ken dena süoshi agiba jagi takar, sensaker aser nokinketer balala jenjang ajiteta liasü. Arju nunger yar tsüingsanga yimdong asem dang pei züngatsüri yi tajung agüja jaja.

Pongünübuba nung zünga balalai shi aser yi anungalu Arju kidang bendena idak nungjaki züngaren balala anepalua awazür nem agitetasa agutsü.

Teroknübuba nikong dang Arju kima mi tulu apur Moatsü ken tentepa tebur ajak senteper yi talubosa jemtepa kazüa liasü. Iba mapang kibong tasen aküمرتemi yiji anepalua agütsütsü. Ibaji temer putirtemi an tepong ka bener yim süngkümi ao Lijaba Tsüngrem külema benjungmongji tembanga aru.

Itemi langzüang:

- | | |
|---|----------------------------|
| (a) _____ ya Moatsü benjung tendi nü ta jembir. | 1 |
| i. Mezügnü | ii. Tanünübuba |
| iii. Tasemnübuba | iv. Teroknübuba |
| (b) Moatsümong ya Lijaba Tsüngrem dang kechi temoatsü meshir ? | 1 |
| i. Metsü | ii. Sungjanglijang |
| iii. Tsük | iv. Chiyongtsü |
| (c) Tanu putu nung Moatsü benjung _____ amonger. | 1 |
| i. ananü | ii. asemnü |
| iii. pezünü | iv. pungonü |
| (d) Aori takar aser sensaker _____ ajanga jenjang ajiteta liasü. | 1 |
| i. tsükjen | ii. kinülumang |
| iii. süoshi | iv. sü achiba |
| (e) Tebur ajak senteper Moatsü ken tentep dang _____ yiji anepalua agütsütsü. | 1 |
| i. süngpo zungai | ii. kibongtasen akumertemi |
| iii. zungatsüri | iv. Arju nungertemi |
| (f) Moatsümong _____ ita nung küm shia amonger. | 1 |
| i. Rongchi | ii. Tsüklai |
| iii. Aami | iv. Monupii |
| (g) Tanu putu aser alemli putu nung Moatsü amongba yimya koma tepila ali oren ana nung züluang. | 2 |
| (h) Koba anogo nung Moatsü mong tembanger aser koma tatsü agi shiang. | 2 |

SHILEM – B (Olem)

2. **Agüja aliba onük aser arrla amshia ojang 100 – 150 shi nung shiti ka züluang:**

- a. Na Merenla/ Merenba. Na school ka nung English Teacher inyaksü asoshi mapa meshia Principal dangi shiti ka züluang. 6

Mesüra

- b. Ner kakat rijü nung, “Sobaliba anogomong” ka ayongzüka liasü. Iba anogomong indang ner kakat rijü osang kakat nung adoktsü atema osang agütsüba ka züluang.

3. **Agüja aliba onük aser arrla amshia ana rongnung ka ojang 50 shi nung züluang:**

- a. Ner kenten teloki kentenba sentong ka ayongzüka lir. Anungji iba sentong nung adentsü asoshi ner medemertem dangi jaokba (invitation) ka züluang. **4**

Mesüra

- b. Agüja aliba onük amshia sensaksem ka züluang:
Nebu nena Tsüngta nai jangraba nükjidong kechi lir iba indang sensaksem (dialogue) ka züluang.

SHILEM – C (Orrlem)

4. **Agüja alibatem nungi shitak telangzüba agüjang:** **1x5=5**

- (a) O Jembiren koba nung _____ olen alir iba dang Timsü oyim ta ajar.
(i) Imoshi (ii) Septsü
(iii) Amukyu (iv) Tentsü
- (b) Tesadang _____ aser tesadang oti agi adokba olen dang mungra ta ajar.
(i) otisem (ii) meyongja
(iii) nüngja (iv) pukhümna
- (c) Tajangzüük angutsü ajaki meranga inyaker.
(i) Kezi mungra (ii) Ayimlok mungra
(iii) Atentep oren (iv) Mapang mungra
- (d) Taküm aliba mesüra maliba kobai maparen ka tenzüker iba dangji _____ ta ajar.
(i) salur (ii) tongnir
(iii) nendong (iv) jilok nendong
- (e) Mungra telemsa kwi lir?
(i) Ana (ii) Asem
(iii) Pezü (iv) trok

5. **Item kobala mapanglem nungsa dena ali anteta züluang:** **1x2=2**

- (a) Parnoki alu mapa ajunga renemogo.
(b) Telok tuluka asenok jakdang arudagi.

6. **Tongnir, salur, nendong lemdanga sayuang:** **1x2=2**

- (a) Tiala tetsü Kohima-i teti aor.
(b) Sanenbai arem nung pongzü ka ajuru.

7. **Itemi kezi mungra aser Mapang Mungra radanga züluang.** **1x2=2**

- (a) Telok nung ojembidang kümdangtsüla.
(b) Tayoktsü süoshi aika bener arua lir.

8. **Itemi rarem leplashi leni meyipang:** **1x2=2**
 (a) Nübur ajungai na meteta lir.
 (b) Teyazü osang agi alima makmakshishidaktsür.
9. **Kezi oren aser Atentep oren rasaa shiang?** **1+1=2**
10. **Ao oshi agi meyipang:** **1x5=5**
 (a) Shut the front door please.
 (b) Whose book is this?
 (c) She did not cheat on the exam, as it was the wrong thing to do.
 (d) Stop biting your fingernails.
 (e) Be quiet now!

SHILEM - D (Otsü aser Sangro)

11. **Agüja aliba nungi shitak telangzüba shimtetang:** **1x5=5**
 (a) Nisung nem terenlok mesüra tajangzük magütsüba sobaliba dang kechi ajar?
 (i) Osettsü setren sobaliba (ii) Osettsüset masübaren
 (iii) Sobaliba tamajung (iv) Sobaliba tasü
- (b) _____ tetezü ki anasa mesüra ki jakdang aliba tesem dang ajar.
 (i) Yimdong (ii) Kima
 (iii) Yim (iv) Kiyong
- (c) Aori aluyimba mapa nung koba mezüng inyaker?
 (i) Azüba (ii) Alulepden
 (iii) Alu achiba (iv) Alu arungba
- (d) Lisem manung züluba _____ agi punger ao.
 (i) Tzüsem (ii) Mopung
 (iii) Tzü (iv) Aoyi
- (e) 'Achi amen' tetezü kechi?
 (i) Shishilembar
 (ii) Tebu tedi
 (iii) Arür amaktsü renemer atsüka ataba
 (iv) kimen

Item tasüngdangbatem ojang 20 – 25 tashi nung langzüang: **2x6=12**

12. Aor sobaliba kechiba tangari junger ta ashir kuli ana agi rajemjang?
 13. Adianu o adianu tsüngta amshitsü awashi tapu ana züluang.
 14. a. 'Puok' kechi dang ajar? Puokji shirnoki alemer?

Mesüra

- b. Arem lushi kümzüka yutettsü atema yimden teinyaktsü tongtipang ana shiang?
15. Aenlen jajar nisung asen limai arudang koma anepalutsü tim?
16. Kechi nüngtem nung ‘Ayatai’ Sungro ya zülü?
- 17 a. “Aor lipok yimli putipuyang akaba kin,” iba tekong ya koba sangro nungi aser shibai zülü?

Mesüra

- b. Kechiba sangro züluri, ‘Ni Chuba Korang Asemstsü Menüngtaker’ ta ashir?

Item tasüngdangbatem ojang 40 – 50 tashi nung langzüang: 4x2=8

18. Moatsü lenpi aser tsükma lenpi koma Sentaktepa lir? Aori lenpidang chiyungtsü koma lemsatepa achir? (2+2=4)
- 19 a. Shiruru aser ozüsangnu tapu balala koma wazüka ayutsü tim terasa kar züluang?

Mesüra

- b. “Chungliyimti kü Soyim,” sangro nungi merütet züluang?

Item tasüngdangbatem ojang 60 – 90 tashi nung langzüang: 3x5=15

- 20.a. Arem lushi wazüka yutettsü atema yimden teinyaktsü kar shiang? Arem lushi melira kechi ataloktsü? (3+2=5)

Mesüra

- b. Puti tetezü kechi? Naga nungeri Tzümar den koma libalirutsü tim? (1+4=5)

21. ‘Kika süchirtem dang taoba
Impartirtemi tushia
Konang nüngsang tali agütsür
Imrong tudendang washiteper.’

- i) Iba takong kechi sangro nungi? (1)
- ii) Sangro zülur tenüng shiang. (1)
- iii) Agüja aliba tekong rasaa züluang. (3)

- 22 a. “Angji ni tiala sang
Nüngjang petidang tema
Akanng Süngküüm lapoker
Kü tayang molung süneptsür.”

- i) Iba tekong ya koba sangro nungi? (1)
- ii) Iba sangro shibai mejem? (1)
- iii) Agüja aliba tekong rasaa züluang. (3)

Mesüra

b. *“Ken o ajak songtepa angatetteper
Mashii ain madoker, teka mesangshir
Terr nung shinga mesamar.”*

- i) Koba sangro nungi? (1)
- ii) Shibai zülu? (1)
- iii) Ya shir indang jembir aser kechiba rateta züluang. (3)

2025
SÜMI (SÜ TSAH)

Total marks : 80

Time : 3 hours

General instructions:

- i) Approximately 15 minutes is allotted to read the question paper and revise the answers.
- ii) The question paper consists of 22 main questions.
- iii) Internal choice has been provided in some questions.
- iv) Write the correct question number in your answer sheet to indicate the option being attempted.

N.B: Check that all pages of the question paper are complete as indicated on the top left side.

KOKÜPPHA – A (Ghili Kiyie)

1. Yepua keu phiju no injü akeqo khochile tsülo:

Khaghi aniza nqo liliti küma ashou shiche pi. Ike ghulo lakhi küma asü gheu kelono liliti no asü kügha nechepe aniza kive vekidevetsü kelo no aniza ye liliti no püthaspütsa no küghashi ighono amulo shimo veno axuide amükhü lunike ghenguno Ayeghilo kiche lhoxüqo hekütsü niye wuve. Ikehu liliti ghi kungu lo kichi lhoxü qo ghakütsü niye wuve. Eno tishi vekethiu kungu lo kiche lhoxü eno Ayeghi lo kiche lhoxü aghü shinike ghenguno, atsala lakhi kihithape qhive. Ayeghilo kiche lhoxu no ayithu eno apighi ala kümano akijeu shino ighi, eno kungu lo kiche lhoxü no awotsa ngo alhuqu kumano akijeu shino ighie pi.

Ike, Alhuqu no awotsa vilo, 'No no akijeu ke ghenguno nono ayithu sasü aghüshi lo,' ipi kemu awotsa no ishi khochile alhuqu vilo pive. Ni ye ayithu no paje keke, ayithu sasü aghü shimoe pive.

Ti ghengu no alhuqu no awotsa vilo ishi pi, tishi aye no ye iqino apighi ala sasü aghü shino ti peikughi lo ipi. Ikemu, Awotsa no, itaghi ishi khochile, ni ye apighi ala no paje keke sasü aghü shimo pive, Tishi aye ino iqini ipi pu apighi ala sasü aghüshi. Ike kughono alhuqu no apighi ala shoqape aye kungu lo kiche lhoxü qono alokivishi igha, eno apighi ala no alhuqu shoqape aye ayeghi lo kiche lhoxü qono alokivishi igha eno kungu lo kiche lhoxü qono amlo ime ishi ae. Ashekha lo alhuqu no apighi ala yipe ikughive. Ike kungu lo kiche lhoxüqo aphihi ala shi phuae. Agha no athithi bolo ilo ihi ke ghenguno, agha ye tsübüive. Eno tsülichepu no ajibo lo ihike ghenguno pa ye huchuhui ve ipi. Ashekha lo ashi piyi kije khave kethiu no ijiu ighie pi, ike aji kitila aghike tipau pe pa mükhü lo nutsü ke ghenguno ijiu ye amükhu huchuhui ipi picheni.

Achapiu tsathi pe kimichi tsulo:

- a. Khuu ngo khuu küma ashou shiche kea? **1**
 - (i) Akha ngo Achuwo
 - (ii) Aniza ngo liliti
 - (iii) Ayothu ngo Alhuqu
 - (iv) Lhoxü ngo Awotsa
- b. Khuu no khuu kive kishi kelono vekideve tsükea? **1**
 - (i) Liliti no asü Kügha nechepe Aniza kive nekidevetsu
 - (ii) Aniza no liliti kive vekedeve tsu
 - (iii) Ayeghilo kiche lhoxü gono
 - (iv) Ayithu akijeu no vekidevetsu
- c. Kungu lo kiche eno ayeghilo kiche lhoxü kuu shini ke a tsala kihithave kea? **1**
 - (i) Külakishi tsala
 - (ii) Kimiyikini tsala
 - (iii) Aghü shinekeu tsala
 - (iv) Küputsa nikeu tsala

- d. Kungu lo kiche lhoxü gholo kuu küma no akijeu shi ighi kea? **1**
 (i) Awotsa ngo Alhuqu küma (iii) Aghawu ngo Alache küma
 (ii) Liliti ngo Aniza küma (iv) Ayithu ngo lhoxüqo
- e. Ayeghi lo kiche gholo kuu lhoxü küma no akijeu shi ighi kea? **1**
 (i) Tsülichepu aphihi (iii) Awotsa ngo Alhuqu
 (ii) Akaha ngo Angushuu (iv) Ayithu ngo apighi
- f. Alhuqu ye atüghishi kishi awotsa vilo pikea? **1**
 (i) Nono akijeu ke ghenguno iqi ayithu sasü aghü shilo pi
 (ii) Nono aküka kutomo ani ke ghenguno
 (iii) Alhuqu no kungu lhoxü kiche ke ghenguno
 (iv) Ayithu no amuqükini ke ghenguno
- g. Alhuqu no kuu sasü aghü shikea? Ashekha lo khuu no aghüshi keu toluve kea? **2**
- h. Agha ye kushi ke ghenguno tsübui kea? Khuno ashekha shi ighi kea? **2**

KOKÜPPHA – B (Iqqikulu)

2. **Atsathi 100-150 dolono yelo:**

- a. Noye Toka/ Vili, Sumi Literature Board lo alakhu mpeu shi akeu vilo sutsa kipi kaku akivishi jukide tsu peni ke. Yekili lakhi yelo. **6**

Momü

- b. Owu yeghikilu puhave keu ghenguno kilekughu shitsu penike zakhemi vilo pikeu shi kiyephi lo yesulo.

3. **Atsathi 50 dolono lakhi likhi yelo:**

- a. Okusau nokujo alu kichi mekua tsa kuputsa keu shilo. **4**

Momü

- b. Kukusu yelo, nono yekala (chighi) 10 lo tokulu shilu keu ghenguno okusami kusu keu yelo. A-a, atsala eno ado kishekulu yesulo.

KOKÜPPHA – C (Tsayeh)

4. **Akiyethi akilhe kili ve keu kimichi tsülo:**

1x5=5

- (a) Inothi pesu _____ shiva.
 (i) thivekemi (ii) akithiu
 (iii) akithi (iv) kithimi
- (b) Ishina pesu _____ shiva.
 (i) isuna (ii) inaghe
 (iii) isuuna (iv) ishiuna
- (c) Niye alitche _____ cheni.
 (i) shiwu (ii) shiu
 (iii) lowu (iv) mewu
- (d) Ipu ye aghilesu lo asü _____ niye wuvea.
 (i) miche (ii) shepu
 (iii) thaqhi (iv) gheniye

- (e) Akuto ye _____ chighi lo phiani.
 (i) class (ii) hekusa
 (iii) kikihi (iv) yekala
5. **Sutsa kutho akiqi pitsülo:**
 (a) Kasho papu igha ighiva. **1**
 (b) Anhezu no ogo ani. **1**
6. **Tsashi pe aje lo süvelo.**
 (a) kime **1**
 (b) pishe **1**
7. **Suchou pe pidelau süvelo:**
 (a) Aqhokigheu. **1**
 (b) Kikhikighi. **1**
8. **Ye küqü pua keu achipiu lono yevelo:**
 (a) Ilhou **1**
 (b) Mula **1**
9. **Atsa tuna pe atsajo mlalo:**
 (a) Tughachuyi **1**
 (b) Yetsuni tsughu **1**
10. **Sütsah lo pekili süve lo.** **1x5=5**
 a. Shut the front door please.
 b. Whose book is this?
 c. She did not cheat on the exam as it was the wrong thing to do.
 d. Stop biting your fingernails.
 e. Be quiet now!

KOKÜPPHA- D (Kichitssathoh eno Apuh Assü Leshe)

11. **Achipiu tsathi pe kimeve tsülo:** **1x5=5**
- (a) _____ ye pa ampi no asho mih ipeghive ipi cheghi.
 (i) Viniho Asumi (ii) Chetovi
 (iii) Sakuto (iv) Kiyezu
- (b) Carey nu akiniu _____ thive.
 (i) John (ii) Peter
 (v) Thomas (iv) George
- (c) Timi ye _____ povine pi kumsuje.
 (i) niqomi (ii) ni lojimi
 (iii) ni lagha (iv) ninguo
- (d) O timi _____ thotsu vesulu aye.
 (i) Alokughono (ii) Kusakusho
 (iii) Alokivi (iv) Amlokusa

- (e) Federal Government of Nagaland ye _____ lono shuphelu.
 (i) Mozaqhi 22, 1950 (ii) Anighi 22, 1957
 (iii) Saghiqhi 22, 1956 (iv) Lusaqhi 22, 1956

Atsathi 20 – 25 dolono khochilelo:

2x6=12

12. Kiu ghenguno timi no ilho keu ye 'Angushuu' pi ku cheni kea?
13. *'Timiye nilojimi paviniepi kumsuye,
 Kucho iposhuu ikujono tsha lu muthaye.
 Lojimi ningu alu avelu moni che aye.'*
 Leshe hipau kiki hepho tsulo.
14. *'Kulawu ye ni thiuno kupunumi,
 Ile jukimiyeni thono kutami phulu kighilu kuami hu,
 Nixeu shimula kupu shenila.'*
 Leshe kiki hepho tsulo.
15. Naga National Council ye kugho no hu kuthu eno tile Sumi sakiphemi khunoqono atughümi shi kuloji kea?
16. Topuna shoxe ghile yelo.
17. a. *'Ino putho zuhu Gholumo ikujo vehu kishito,
 Launo cheju puha aye inhezu ikighi anishi saye.'*
 Leshe hipau akiqi hepho tsulo.

Momü

- b. Tusholi ye ajoji ghawu ithulu ke thiu ye kishi wuve kea?

Atsathi 40-50 dolono khochilelo:

4x2=8

18. a. 'Ino thoghiu no aghami sasu hughinike ke tishi ngo aghive lo.' Atsajo hipau ye khiu no khiu vilo pi ani kea? Kiu ghenguuno pi ani keno kishekulu shi yelo.

(2+2=4)

Momü

- b. Shoko totimi lakhi nuliqo je tsulo. Eno aza thive kethiu panongu ye kishive keno yelo.
19. *"Ikino showo tsukinho lazu,
 She ikuwo tsukinhe inakukhu
 Kiye opuno lhokha she
 Akusa hi isala shiftsuye."*
 Leshe kiki hepho tsulo.

Atsathi 60 - 90 dolono khochilelo :

20. a. William Carey kuxu pasu ghili akivishi yelo.

5

Momü

- b. Apu asu no pikibe ighikeu lo timi ghungu ajeli khijeli ani kea? Aghungu lakhi khiwu ghili hepho tsulo.

21. a *‘Ishe shotomi paina no iqi
Kivikhu noghami ghutu shole aye
Shole mula aye ilegho kichilo
Ratshamu nano tungu sayewo
Cheileqho shole aye shole luve ala.’*
- | | |
|---------------------------------------|---|
| i. Shotomi paina ye kiu pi ani kea? | 1 |
| ii. Khuuno ghami ghutu shole kea? | 1 |
| iii. Kiu ghengungo chieleqho che kea? | 1 |
| iv. Tungu kiki ye kiu kea? | 1 |
| v. Kiu gheguno shole luve kea? | 1 |
- Momü**
- b. Muthugha eno putupuno gha ghili yelo. (5)
22. *“O ishe! Ishi lomo huye
Ghoyino asu ghilo iku igha kua hu
Tiye nino anachumi kughutsa hu toi,
Ti ini ilosuqhiyi atsukuzu khelho ghi hu ani.”*
- | | |
|---|---|
| i. Khuno lomo hu kea? | 1 |
| ii. Asughilo kiki ye kiu kea? | 1 |
| iii. Anachumi kughutsa ye kiu pi ani kea? | 1 |
| iv. Kiu ini keu tsa pi ani kea? | 1 |
| v. Kiu leshe lo ani kea? | 1 |

Total number of printed pages : 5

NB-T/L/1

**2025
LOTHA**

Total marks : 80

Time : 3 hours

General Instructions :

- i) *Approximately 15 minutes is allotted to read the question paper and revise the answers.*
- ii) *The question paper consists of 22 main questions.*
- iii) *Internal choice has been provided in some questions.*
- iv) *Write the correct question number in your answer sheet to indicate the option being attempted.*

N.B: *Check that all pages of the question paper are complete as indicated on the top left side.*

SECTION - A (Ekhao)

1. Motsü shi khæ zesi oküpoë engao jiang janlana:

Benkadani na potsow na emhoktsüngo ekümrümo elümoto liyingcho. Hojiang yulo Tragopan woro jo limha lo opyonori mmhontso ekümrüm olan motsünga. Limha nken topvü lo woro olan olan vanra. Liphong akvü lo woro echümporo vanala osi hoji woro ji onte liphong woro to ejanala. Tita jo ezechüngthav woro motsünga osi woro shi jo India na ete liphong woro to ejanala. Ete Naga meta lo ha woro thanpo jiang lona echümporo tssoa woro motsünga Tragopan to tsa vana. Tragopan shijo ete Nagaland yasaron na ete meta (State) woro tssotokala.

Ete metae ha woro elümoto vana, tokhatola Tragopan shijo thanpo woro jiang lona elümoto opyon ori mmhonkata. Woro shi ete Naga meta Jolowoe Manipur tona Burma to erü shiang lo tai na hungala. Tragopan shi jo ete Naga meta esüa elüm ha nlümkhüng etssük ha tsükshia ntssük khüng to tvü meta lo vanala. Tragopan hanpong jo emen, kvüri tojo rakia, osi omhyik jo ehüm na nkonzhücho. Osi evüngi ohüm jiang jo opyon elümoto mmhona. Tragopan hankyu jo hanpong jiang esüa tata opyonori nmhon. Thanpo woro tita, mongshiro osi Rjüng shiang esüa jo meta topvü lo vanra, tokhatola Tragopan woro shi jo meta topvü lo nhungala. Onte etsoyu jo tssüngthilonpen, oraori osi lomosüvo to shiang tsoala. Rotssoroni ha thanpo woro jiang lona elümoto matarokata rotssoronia. Onte na nzyua lo oro motsünga tona eni to tai tssoala. Oro jiang kümchev ha elümoto khünga, hoji tsükona woro shi jo ntsena. Limha lo ovüngoto tssoa Nagaland meta lona Tragopan woro shi ji vüngpheni na rotssoroni dentokcho. Shi woro shi vüngpheni na rotssoronitoko ji tsükona limhatsü na e thüngala. Woro shi na nyazüngi na phanthi e ngahüngthav khüala. Ombo na vonlan mezhü yuta echümpo echümpo lo khüala. Nzazüngi onte na ovon elumoto ntssana ekhüo ji tsükona ekümrümo enhyano yipta evamo jiang nthechiala. Onte na elani elümoto sülana yipala. Shi yichak jo woro ji thojürhyumhena osi nchümri eli osi otsükoso mmhom woro to zechetala. Woro shi na onte tsüko ohüm opyon mmhomo shi ji elümoto ntangshonala. Ete na Tragopan shi esüa woro thanpo opyonori mmhom nhüngala.

Tragopan woro shi vüngpheni na rotssoronitokvü tsükona, rotssoroniphen UK yansasa, Nagaland yansasa tona limhatsü pheasant Association to nzotssoe June 1983 lona London lo rotssoroniphen nsüngrüthaka.

Engao shiang janlana:

- a. Woro shi jo nzyua lo oro kvüta tssoala? 1
 - (i) Eni ethüm (iii) Motsünga, ethüm
 - (ii) Ethüm mezhü (iv) Motsünga, eni
- b. Yitongran shilo yitsüing 'ndangshonala' shi esütao yitsüing ji jo; 1
 - (i) Ntssana (iii) Matarokatala
 - (ii) Nkümnfüala (iv) Nthechiala
- c. Tragopan woro shi na vonlan kvüta yuta echümpo echümpo lo khüala? 1
 - (i) Eni (iii) Mezhü
 - (ii) Ethüm (iv) Mongo
- d. India na _____ ji liphong woro to ejanala. 1
 - (i) Tragopan (iii) Rjüng
 - (ii) Tita (iv) Kyashak
- e. Tragopan woro shi vüingpheni na rotssoronitoko ji tsükona limhatsü na _____ meta thüngala. 1
 - (i) Mizoram (iii) Nagaland
 - (ii) Manipur (iv) Kerela
- f. Tragopan woro jo opyon olan kvüta vana? 1
 - (i) 3 (iii) 5
 - (ii) 4 (iv) 6
- g. Nagaland yansaron na Tragopan woro shi rotssoronitokvü tsükona ntio madang khitaka? 2
- h. Yitsüing shiang nkhümao kümthoka: 1+1=2
 - (i) Rakzhüa (ii) Hanpong

SECTION – B (Eramo)

2. Oküpoe pi elio shiang oni lo motsünga ethüing, yitsüing 100 -150 harüma na erana:

- a. Ni na vana evamo yantsüro (Town) jilo zotoro yakchia olani tssatssorükhü (Meyansüyan) elumoto kyongkata lia evamo ji tanglanchi/tangthechiv tsükona Deputy Commissioner thüing yiyenta kako erana.

Mekana

6

- b. Nino khaphenki motsünga lo ekhae ekhüng jilo esopvü tssocho. Ni na Joren 10 (class 10) ekhae nonghori jiang sosi meta zeta yentsata wotasi eyio ji kvüto wotasi yitacho sana nte khaphenki yithenkako ji lo yirüa (report) erani theta.

3. Oküpoe pi elio shiang oni lo motsünga ethüing, yitsüing 50 harüma na erana :

- a. Nte khaphenki ji benkasi nzyu tinyan bena evamo ji tsükona shona jubilee khitavsa evamo ji tsükona nte pvüopoang thüing etsa kako erana.

Mekana

4

b. Ekhiranta:

Ni tona ni shom to yutalo ezhüethük (environment) nmena evamo ji kvütoli mmhonkatokvü sana ekhiranta janta phyotao ji erana.

SECTION - C (Yinsanlan)

4. Janlan pi elio jiang lona elamo ji erana :

1x5=5

- (a) Ni nzanchi _____ enghikatala. Mhachüngyi elamo ji khi pyingtoka;
 (i) poni (ii) thüngi
 (iii) nandang (iv) pono
- (b) A khonzana O, opvüi, shi jo,
 (i) Etovo Eyieton (ii) Raka Eyieton
 (iii) Etsyuka Eyieton (iv) Nungka Eyieton
- (c) Tsüngon _____ lo Tsüngtikha motsünga tssoala.
 (i) Tiying (ii) Thümro
 (iii) Taroeni (iv) Tiza
- (d) 'Ekaroa' shi esütao yitsüng ji jo;
 (i) Teria (ii) Hungria
 (iii) Siphoe (iv) Beleta
- (e) Oki ji onte na panroe sicho. Shilo tssoyio yi ji jo;
 (i) panroe (ii) ji
 (iii) onte (iv) sicho

5. Ejüngi elio shiang Tepfüyi khi pyingthoka.

1x2=2

- a. Woro jiang jo _____ na pyala.
 b. Ompvü na oyi _____ nsanala.

6. Yitsüng 'Zhüa' shi na yichak eni pia yiren nsüngrüa.

1x2=2

7. Shiang Erhüyi kümtoka.

1x2=2

- a. Ombo na phycho, 'A na elhi shi ekhyo tssov.'
 b. Ompvü na phycho, "Shirojü eyen ji na shirojü njüm e pia vanala."

8. Yiren pi elio shiang yitsünga tae na janlana

1x2=2

- a. Sanrhyu lo thyutasanta elio yi jiang.
 b. Eloeranküm yanpithang.

9. Yiren shiang etsyuchi ephani na janlana

1x2=2

- a. A na kako motsünga eramü (Present Perfect Tense kümtoka)
 b. Ombo shilo vanala. (Simple Future Tense yiren kümtoka)

10. Shiang Lotha yi na Khophia.

1x5=5

- a. Shut the front door please.
 b. Whose book is this?
 c. She did not cheat on the exam, as it was the wrong thing to do.
 d. Stop biting your fingernails.
 e. Be quiet now!

SECTION – D (Eranntolan)

11. Engao shiang akvülo elamo ji ethüngi janlana:

1x5=5

a. Onjeni lo eramo (ota) ji na ntio yuthitong ejoe vacho la?

- | | |
|-----------------|-----------------|
| (i) Liyutong | (ii) Sheyutong |
| (iii) Yurüptong | (iv) Yukhümtong |

b. Orhong ehae jiang jo elhi etssoeden okho kvüwoe la?

- | | |
|----------------------|--------------------|
| (i) Nsüngrüiden | (ii) Jicheiden |
| (iii) Nzanchipvüiden | (iv) Hanpihanriden |

c. Rithak Tokhvü yutalo pvüti na otssok khyathüng poni li jondemo jiang jo _____ lona etüki theyicho

- | | |
|--------------------|--------------|
| (i) Tssokhan khyak | (ii) Hanjung |
| (iii) Eno Khyak | (iv) Lekhüm |

d. “Obenro” ji yichak jo;

- | | |
|---------------|---------------|
| (i) Nzantsoro | (ii) Okharo |
| (iii) Ngaro | (iv) Eboeroro |

e. Pofü zhükhü shi jo _____ na süngpencho.

- | | |
|------------------------------|---------------------------|
| (i) Saramati phonglan yenjoe | (ii) Tiyi phonglan yenroe |
| (iii) Japfü phonglan yenjoe | (iv) Longkhüm mponi |

Oküpoengao shiang yitsüing 20 – 25 harüma na janlana:

2x6=12

12. Eboe (onyuro) ji na potsow loroe ji engalo woathüng opo na otsolov jiang kvütolyui vantokcho la?

13. Pikhüchak Tokhvü phycho sülo Sarisapvüta rotao jiang eni erana.

14. Etsüi jiang na Wokha meta lo ntio jiang hüngi epitacho la?

15. ‘Phencho vara rocho’ shi jo ntio ntio thera jiang lo ejyukacho la?

16. Elhi etssoe olan mongoto jiang jo ochoang ochoang la?

17. a. Ranphan jo oyan kvülo vanathüng Mmhorü ji lüngthacho la? Osi ombo khüp jijo oyan kvülo lichcho la? (1+1=2)

Mekana

b. Nkolo jo arakarita jiang nlansüngtav tsükona ntio elhi tssotacho la?

Oküpoengao shiang yitsüing 40 – 50 harüma na janlana:

4x2=8

18. a. Zükhümki yan ji jo kvütolyui pyoncho la?

Mekana

b. Elhi etssoe olan ethümoto jiang jo ochoang la? Onte na ete tsükona ntio elhi tssoa la?

Ntio tsükona onte na elhi etssoe ovüngo eni jiang nthev jo onte elhi ntssocheta la?

19. a. Chungiyi “Pofü” to ephyo jilo.

- i) Eranpvüo ji jo ocho la? (1)
- ii) Mizhü wondang ji jo kvülo na tsüngyacho la? (1)
- iii) Zhükhüro olan olan na Pofü lo eryua evamo jiang erana. (2)

Mekana

b. *“Yankhyingroe jophae yentsao, nti ntana yentsa vana ato? Nti von ha zozo na yentsa ato? Ete oren shilo jo, nti ntani na, sümro ezhü ntav roe khi.”*

- i) Ocho na osümi yentsalo wocho la? (1)
- ii) Khenzhü shi jo ocho na phycho la? (1)
- iii) ‘Nti ntani’ ji yichak jo ntio la? (1)
- iv) Ntio tsükona khenzhü shi phycho la? (1)

Oküpoe engao shiang yitsüng 60 – 90 harüma na janlana:

5x3=15

20. a. Nkolo ntsinranche tona enhunga ntsinranche to etsita erana. Nkolo ntsinranche jiang jo ochoang na roe sicho la? (1+4=5)

Mekana

b. Mvüthanratssen jo kvütothüng khiala? Mvüthanratssen lo wokoro füli, otssü tona hono hanrüşüm to chekav jiang erana. (1+4=5)

21. Chungiyi *“Oshomo Merangcho”* yintssen ji erana.

22. a. *“Etsüoben mayangro ashavo na,
Yantaro limha nchanjamü tsaila,
Echüli vandamvü, Apisanglao,
Senthon opong khi okhe rümicho kila,
Müktsü opvü na okhe rümicho kila,
Nina khisi Mongjemojü longrojü yutokle”*
Khenzhü shi etsyukata eroroa erana.

Mekana

b. *“Nti ntani etsüoben vüjao na,
Korü sosi romhon tansoa roe khi,
Evonphen hanpvü benrümisi chanta le;
Tiyi Noro meria chance khi,
Ji eyan romhon tansoa chiro,
Mongjemojü jüying, yantaro thera hüngi khi epi.”*
Khenzhü shi etsyukata eroroa erana.

2025
HINDI

Total Marks :80

Time : 3 hours

General Instructions :

- i) Approximately 15 minutes is allotted to read the question paper and revise the answers.
- ii) The question paper consists of 16 main questions.
- iii) Internal choice has been provided in some questions.
- iv) Write the correct question number in your answer sheet to indicate the option being attempted.

N. B : Check that all pages of the question paper are complete as indicated on the top left side.

SECTION-A (उपठित बोध)

1. निम्नलिखित गद्यांश को पढ़कर पूछे गए प्रश्नों के उत्तर लिखिए :

महात्मा गाँधी अपने काम अपने हाथ से करने पर बल देते थे । वह प्रत्येक आश्रमवासी से आशा करते थे कि वह अपने शरीर से संबंधित प्रत्येक कार्य सफाई तक स्वयं करेगा । उनका कहना था कि जो श्रम नहीं करता है, वह पाप करता है और आपका अन्न खाता है । ऋषि मुनियों ने कहा - बिना श्रम किए जो भोजन करता है, वह वस्तुतः चोर है । महात्मा - गाँधी का समस्त जीवन - दर्शन श्रम सापेक्ष था । उनका समस्त अर्थ - शास्त्र यही बताता था कि प्रत्येक उपभोक्ता को उत्पादनकर्ता होना चाहिए । उनकी नीतियों की उपेक्षा करने के परिणाम हम आज भी भोग रहे हैं । न गरीबी कम होने में आती है, न बेरोजगारी पर नियन्त्रण हो पा रहा है और न अपराधों की बढ़ावा हमारे वश की बात रही है । दक्षिण कोरियावासियों ने श्रमदान करके ऐसे श्रेष्ठ भवनों का निर्माण किया है , जिनसे किसी को भी ईर्ष्या हो सकता है । श्रम की अवज्ञा के परिणाम का सबसे ज्वलंत उदाहरण है हमारे देश में व्याप्त शिक्षित वर्ग की बेकारी । हमारा शिक्षित युवा वर्ग शारीरिक श्रमपरक कार्य करने से परहेज करता है, वह यह नहीं सोचता है कि शारीरिक श्रम परिणामतः कितना सुखदायी है ।

a. गाँधी जी प्रत्येक आश्रमवासी से आशा करते थे कि वह -

1

- (i) आत्मनिर्भर बने
- (ii) परिश्रमी बने
- (iii) अपने शरीर से संबंधित प्रत्येक कार्य स्वयं करें
- (iv) आश्रम के काम में योगदान दे ।

- b. प्रस्तुत गद्यांश में चोर व्यक्ति किसे कहा गया है ? 1
- (i) जो चोरी करता है (ii) जो श्रम नहीं करता है
 (iii) जो बिना श्रम किए भोजन करता है (iv) जो पाप करता है ।
- c. महात्मा गाँधी का अर्थशास्त्र क्या बताता है ? 1
- (i) प्रत्येक व्यक्ति को केवल वस्तुओं का उपभोग करना चाहिए ।
 (ii) प्रत्येक व्यक्ति को श्रमदान करना चाहिए ।
 (iii) प्रत्येक व्यक्ति को उत्पादनकर्ता होना चाहिए ।
 (iv) प्रत्येक व्यक्ति को श्रम की अवज्ञा करनी चाहिए ।
- d. दक्षिण कोरियावासियों ने श्रमदान करके ऐसा क्या किया कि किसी को भी ईर्ष्या हो सकती है? 1
- (i) देश से गरीबी दूर हुई ।
 (ii) श्रेष्ठ भवनों का निर्माण किया ।
 (iii) श्रेष्ठ कला का प्रदर्शन किया ।
 (iv) देशवासियों की बेरोजगारी दूर हो गई।
- e. श्रम की अवज्ञा से भारत पर क्या प्रभाव पड़ा ? 1
- (i) शिक्षित वर्ग में बेकारी बड़ी । (ii) शिक्षित वर्ग में रोजगार बड़े ।
 (iii) शिक्षित वर्ग खुशहाल हो गया । (iv) इनमें से कोई नहीं
- f. 'शरीर' शब्द का पर्यायवाची शब्द लिखिए । 1
- (i) कान (ii) देह (iii) बल (iv) नाक
- g. महात्मा गाँधी जी किस बात पर बल देते थे ? वे क्या आशा करते थे ? 2
- h. श्रम की अवज्ञा के क्या परिणाम हो सकते हैं ? शिक्षित वर्ग किस बात से परहेज करता है ? 2

SECTION-B (लेखन)

2. निम्नलिखित में से किसी एक प्रश्न- का उत्तर 100-150 शब्दों में लिखिए : 6
- a. प्लास्टिक की थैलियों से हो रही हानि के बारे में किसी समाचार पत्र के सम्पादक को पत्र लिखकर अपने सुझाव दीजिए ।

(अथवा)

- b. आप ABC विद्यालय के सचिव राम/ माया हैं | आप के विद्यालय में विज्ञान प्रदर्शनी मनाया गया | इस सन्दर्भ में एक संक्षिप्त प्रतिवेदन लिखिए |

3. निम्नलिखित में से किसी एक प्रश्न का उत्तर 50-100 शब्द में लिखिए :

4

- a. मित्र को अपने माता – पिता के शादी की साल गिरह शुभ – अवसर पर आमंत्रण करते हुए एक पत्र लिखिए |

(अथवा)

- b. दो छात्राएँ अपने जीवन के लक्ष्य के बारे में बात चीत कर रहे हैं दोनों के बीच होने वाले संवाद को लिखिए |

SECTION-C(व्याकरण)

4. निम्नलिखित विकल्पों में से सही उत्तर चुनकर लिखिए :

1x5=5

- a. 'नमस्कार' किस संधि का उदाहरण है ?

(i) स्वर संधि (ii) व्यंजन संधि (iii) विसर्ग संधि (iv) इनमें से कोई नहीं

- b. 'राजपुत्र' कौन सा समास है ?

(i) तत्पुरुष (ii) बहुव्रीहि (iii) कर्म (iv) धर्म

- c. वाच्य के कितने भेद होते हैं ?

(i) तीन (ii) चार (iii) पाँच (iv) छह

- d. 'आमने – सामने' में कौन – सी पुनरुक्ति है ?

(i) अपूर्ण (ii) पूर्ण पुनरुक्ति
(iii) अनुकरण वाचक पुनरुक्ति (iv) कोई नहीं |

- e. "सरला विद्यालय जायेगी" किस काल का वाक्य है ?

(i) भूतकाल (ii) वर्तमान (iii) भविष्य (iv) इनमें से कोई नहीं

5. निम्नलिखित शब्दों के दो-दो पर्यायवाची शब्द लिखिए :

1+1=2

(a) उजाला (b) अग्नि

6. निम्नलिखित शब्दों के विलोम शब्द लिखिए :

$\frac{1}{2} \times 4 = 2$

(a) मित्र

(b) बहादुर

(c) आशा

(d) सौभाग्य

7. निम्नलिखित शब्दों के लिंग बदलिए:

$\frac{1}{2} \times 4 = 2$

(a) युवा

(b) जेठ

(c) विधवा

(d) मृग

8. निम्न मुहावरों के अर्थ लिखकर वाक्य में प्रयोग कीजिय ।

$1+1=2$

(a) आसमानी बातें करना

(b) खून पसीना एक करना

9. कोष्ठक में दी गयी क्रिया के सही रूप से वाक्यों के खाली स्थान भरिये -

$1 \times 2 = 2$

(a) उसने आज सवेरे छह बजे जोभोसे को..... (जागना)

(b) नोकदेन नोकर से चाय..... रहा है । (बनाना)

10. निम्नलिखित वाक्यों का हिंदी में अनुवाद कीजिए :

$1 \times 5 = 5$

(a) Shut the front door please.

(b) Whose book is this ?

(c) She did not cheat on the exam, as it was the wrong thing to do.

(d) Stop biting your fingernails.

(e) Be quite now!

SECTION-D(साहित्य)

11. निम्नलिखित विकल्पों में से सही उत्तर चुनकर लिखिए:

$1 \times 5 = 5$

(a) सोमा बुआ के परिवार में कोई ऐसा सदस्य नहीं था जो उनके को दूर करता ।

(i) समस्या

(ii) अकेलेपन

(iii) परिवार

(iv) दर्द

(b) सेवा देने की चीज है,..... की नहीं ।

(i) लेने

(ii) लिये

(iii) दी

(iv) त्यागने

(c) पंचायत में किस वर्ग को विजय प्राप्त हुई ?

(i) भेड़िया

(ii) बूढ़ा सियार

(iii) भेड़

(iv) धर्म गुरु

(d) "गीताञ्जलि" किस कवि की रचना है ?

(i) हरिवंश राय बच्चन

(ii) अब्दुरहीम खान

(iii) रवीन्द्रनाथ ठाकुर

(iv) कोई नहीं

(e) पर्वतों को काटकर क्या बना देते हैं ?

(i) पथ

(ii) खेत

(iii) सड़के

(iv) झरने

12. निम्नलिखित प्रश्नों के उत्तर 20-25 शब्दों में लिखिए :-

2x6=12

(a) नगर भर में मुलीवाले के आने का समाचार क्यों फैल गया ?

(b) गाँव के सभी युवक अरमा से क्यों जलते थे ?

(c) चुनाव की निकटता भेड़ों के लिए हर्ष और भेड़ियों के लिए संकट का कारण क्यों बन रही थी?

(d) गजाधर बाबू के आने से पहले अमर ने अलग होने की बात क्यों नहीं सोची ?

(e) छिपकली, कानी कुतिया और चूहों की हालत खराब क्यों थी ?

(f) तेरा देवता वहीं चला गया है पंक्ति से कवि का क्या अभिप्राय है ?

13. निम्नलिखित प्रश्नों के उत्तर 40-50 शब्दों में लिखिए :

4x2=8

(a) " व्यवहार – कुशलता" पाठ के लेखक कौन हैं ? उनका जन्म कब और कहाँ हुआ था ?

लोगों को हमारी सहनुभूति की सबसे अधिक आवश्यकता कब और होती है ?

(अथवा)

समधी के यहाँ विवाह में भाग लेने के लिए सोमा बुआ ने क्या – क्या तैयारियाँ की ?

(b) संगति का असर किस प्रकार पड़ता है | यह बात रहीम ने कैसे समझायी है ?

14. निम्नलिखित पद्यांश को पढ़कर पूछे गए प्रश्नों के उत्तर लिखिए :

गीत मेरे, देहरी के दीप - सा बन |

एक दुनिया है हृदय में मानता हूँ

वह घिरी तम से, इसे भी जानता हूँ

छा रहा है किंतु बाहर भी तिमिर - घन ;

गीत मेरे देहरी के दीप - सा बन |

प्राण की लौ से तुझे जिस काल बारू

और अपने कण्ठ पर तुझको सवारूँ
कह उठे संसार, आया ज्योति का क्षण ;
गीत मेरे देहरी के दीप - सा बन ।

- | | |
|--|---|
| i) कवि के हृदय की दुनिया किससे घिरी हुई है ? | 1 |
| ii) कवि किसे देहरी के दीप जैसे बनने को कह रहा है ? | 1 |
| iii) बाहर की दुनिया में क्या छाया हुआ है ? | 1 |
| iv) कवि किसको अपने कण्ठ पर सँवारना चाहता है ? | 1 |
| v) आया ज्योति का क्षण कौन कह उठेगा ? | 1 |

15. निम्नलिखित गद्यांश को पढ़कर पूछे गये प्रश्नों के उत्तर लिखिए :

- (a) गजाधर बाबू खुश थे, बहुत खुश! पैंतीस साल की लम्बी नौकरी के बाद रिटायर होकर घर जा रहे थे। इन वर्षों में अधिकांश समय उन्होंने अकेले रहकर काटा था । उन अकेले क्षणों में उन्होंने उसी समय की कल्पना की थी जब वे अपने परिवार के साथ रह सकेंगे । इसी आशा के सहारे वे अपने अभाव का बोझ ढो रहे थे । सांसारिक दृष्टि से उनका जीवन सफल कहा जा सकता था । उन्होंने शहर में मकान बनवा लिया था। बड़े लड़के अमर और लड़की क्रांति की शादियाँ कर दी, दो बच्चे ऊँची कक्षाओं में पढ़ रहे थे ।
- | | |
|--|---|
| (i) गजाधर बाबू कितने वर्षों के बाद रिटायर होकर आ रहे थे ? | 1 |
| (ii) सांसारिक दृष्टि से किनका जीवन सफल कहा जा सकता है ? | 1 |
| (iii) गजाधर बाबू के कितने बच्चे थे ? | 1 |
| (iv) गजाधर बाबू किस आशा के सहारे अपने अकेलेपन का बोझ ढो रहे थे ? | 1 |
| (v) "सफल" का विलोम शब्द लिखिए । | 1 |

(अथवा)

- (b) कविता के मर्मज्ञ और रसिक स्वयं कवि से अधिक महान होते हैं । संगीत के पागल सुनने वाले ही स्वयं संगीतकार से अधिक संगीत का रसास्वादन करते हैं । यहाँ पूज्य नहीं पुजारी ही श्रेष्ठ है । यहाँ सम्मान पानेवाले नहीं सम्मान देनेवाले महान हैं । स्वयं पुष्प में कुछ नहीं है पुष्प का सौन्दर्य उसे देखने वाले की दृष्टि में है । दुनिया में कुछ नहीं है । जो कुछ भी है हमारे चाह में, हमारे दृष्टि में ही है । यह अद्भुत भारतीय व्याख्या अजीब - सी लग सकती है, पर हमारे पूर्वज सदा इसी पथ के यात्री रहे हैं । ।

- (i) कवि से अधिक महान कौन होते हैं ? (1)
- (ii) संगीत का रसास्वादन कौन करते हैं ? (1)
- (iii) किसे श्रेष्ठ बताया गया है ? (1)
- (iv) " पुष्प" का दो पर्यायवाची शब्द लिखिए । (1)
- (v) "सौन्दर्य" का विलोम शब्द लिखिए । (1)

16. निम्नलिखित में से किसी एक पद्य खंड की संदर्भ तथा प्रसंग सहित व्याख्या कीजिए: 5

- (a) संगति दोषु, लगौ सबनु, कहे ते साँचे बैन ।
कुटिल-बंक भ्रुव संग भए, कुटिल बंक गति नैन ॥

(अथवा)

- (b) लोग जब ऐसे, समय पाकर जनम लेंगे कभी ।
देश की ओ जाति की होगी भलाई भी तभी ॥

Total number of printed pages - 6

2025 BENGALI

Total Marks : 80

Time : 3 hours

General Instructions :

- (i) *Approximately 15 minutes is allotted to read the question paper and revise the Answers.*
- (ii) *The question paper consists of 23 main questions.*
- (iii) *Internal choice has been provided in some questions.*
- (iv) *Write the correct question number in your answer sheet to indicate the option being attempted.*

N.B. : Check to ensure that all pages of the question paper is complete as indicated on the top left side.

বিভাগ – ‘ক’

পাঠ (Reading)

1. নিচের পাঠটি মনোযোগ দিয়ে পড়:

২৫ জুন, ২০২৪: ১১:০২ :রোগী দেখা তাঁর পেশা ছিল, নেশা ছিল, কাজের ফাঁকে গিটার গলায় ঝুলিয়ে গাঁ গাওয়া; মিশুকে, হাসিখুশি চিকিৎসকের জনপ্রিয়তা ছিল নেটাগরিকদের মধ্যে। চোখে ‘প্রোটেক্টিং গ্লাস’ মুখ থেকে খুলে গলায় ঝোলানো মাস্ক, হাতে গিটার আর গানের সুরে প্রতিবাদ। চিকিৎসকদের পেশার নেতিবাচক দিক নিয়ে গাওয়া নচিকেতার সুর একই রেখে শুধু শব্দ বদলে গান গেয়েছিলেন মুর্শিদাবাদ মেডিক্যাল কলেজের চিকিৎসক অনিবার্ণ দত্ত। কোভিড অতিমারির সময়ে চিকিৎসকদের অবদান নিয়ে তাঁর গাওয়া গান সেই সময় সমাজমাধ্যমে ভাইরাল হয়েছিল। সেই চিকিৎসকের মৃত্যুর হল মাত্র ৩৭ বছর বয়সে। মঙ্গলবার দুপুরে হৃদরোগে আক্রান্ত হন তিনি। চিকিৎসকের অকালমৃত্যুতে শোকস্তব্ধ চিকিৎসক মহল।

মুর্শিদাবাদ সাগরদিঘির বাসিন্দা ছিলেন চিকিৎসক অনিবার্ণ। রামকৃষ্ণ মিশন বিদ্যামন্দির থেকে পড়াশোনার পর ডাক্তারি পড়তে যান উত্তরবঙ্গ মেডিক্যাল কলেজে। তারপর রামকৃষ্ণ মিশন সেবা প্রতিষ্ঠান হাসপাতাল থেকে করেছিলেন এম ডি পি জি টি প্যাথোলজি। সমাজে চিকিৎসকদের অবদানের পাশাপাশি, বুদ্ধিজীবীদের নীরবতা ও স্বাস্থ্য কার্ডে বাজেট বরাদ্দ নিয়ে প্রশ্ন তুলেছিলেন মুর্শিদাবাদ মেডিক্যাল কলেজের চিকিৎসক অনিবার্ণ। রাজ্যের নতুন প্রজন্মের চিকিৎসকদের মধ্যে জনপ্রিয় ছিলেন তিনি। রোগী দেখা তাঁর পেশা ছিল, নেশা ছিল কাজের ফাঁকে গিটার ঝুলিয়ে গান গাওয়া। মিশুকে, হাসিখুশি চিকিৎসকের আলাদা করে পরিচিতি ছিল নেটাগরিকদের মধ্যে। তাঁর মৃত্যুর খবর ভাইরাল হয়ে গিয়েছে সমাজমাধ্যমে।

২০১৮ সাল থেকে মুর্শিদাবাদ মেডিক্যাল কলেজের সঙ্গে যুক্ত ছিলেন অনির্বাণ। কোভিডকালে গান বেঁধে আক্রান্তদের লড়াইয়ের মনোবল জুগিয়েছেন তিনি। সেই সময়ে চিকিৎসকেরা কোথাও আক্রান্ত হলে প্রতিবাদ করেছেন রাস্তায় নেমেও। কিন্তু অকালেই থেমে গেল সেই প্রতিবাদী কণ্ঠস্বর। মঙ্গলবার বহরমপুরেই চিকিৎসকের শেষকৃত্য সম্পন্ন হয়েছে।

নির্দেশ অনুসারে নিচের প্রশ্নগুলির উত্তর দাও :

- (ক) মুর্শিদাবাদ মেডিক্যাল কলেজের চিকিৎসকের কী নাম ছিল? 1
- (i) অনির্বাণ দত্ত (ii) অনির্বাণ দাস
- (iii) অনির্বাণ কর (iv) অনির্বাণ রায়
- (খ) কত বছর বয়সে চিকিৎসকের মৃত্যু হয়েছে? 1
- (i) ৩০ বছর (ii) ৩৫ বছর
- (iii) ৩৭ বছর (iv) ৪০ বছর
- (গ) কোন রোগে আক্রান্ত হয়ে চিকিৎসকের মৃত্যু হয়েছে? 1
- (i) ক্যান্সার (ii) হৃদরোগ
- (iii) করোনা (iv) জপ্তিস
- (ঘ) কোন সময় অনির্বাণের গান ভাইরাল হয়েছিল? কোন বাদ্যযন্ত্রের সাহায্যে তিনি গান গাইতেন? 1+1=2
- (ঙ) সাগরদিঘি কোন জেলায়? 1
- (i) বাঁকুড়া (ii) পুরুলিয়া
- (iii) মেদিনীপুর (iv) মুর্শিদাবাদ
- (চ) কোন সাল থেকে তিনি মুর্শিদাবাদ মেডিক্যাল কলেজের সঙ্গে যুক্ত ছিলেন? 1
- (i) ২০১৬ (ii) ২০১৮
- (iii) ২০২০ (iv) ২০২২
- (ছ) ‘অকাল মৃত্যু’ ব্যাসবাক্য হবে – 1
- (i) অকালে মৃত্যু (ii) অকাল ও মৃত্যু
- (iii) অকালে মৃত্যু হয়েছে যার (iv) অকাল অথচ মৃত্যু

- (জ) অনিবার্ণ কোথা থেকে প্রথম পড়াশোনা করেন? তিনি কোন মেডিক্যাল থেকে ডাক্তারি পড়েছিলেন?

1+ 1=2

বিভাগ – ‘খ’

রচনা ও নির্মিতি (Writing and Composition)

2. নিচের যে কোনও একটি বিষয় বেছে নিয়ে ১০০ – ১৫০ টি শব্দের মধ্যে উত্তর দাও :

- (ক) মনে করো, তুমি চুমুকদিমা টি. কে. কমপ্লেক্সের বাসিন্দা রজতাভ দত্ত। তোমাদের আবাসনের জল নিকাশি ব্যবস্থার বেহাল দশার জন্য অল্প বৃষ্টিতেই বিস্তীর্ণ এলাকা জলমগ্ন হয়ে পড়ে। এই বিষয়ে তোমাদের আবাসনের সম্পাদকের দৃষ্টি আকর্ষণ করে এর সুরাহা চেয়ে একটি আবেদনপত্র লেখো।

6

অথবা

- (খ) তুমি মোন লিটল হার্ট স্কুলের দশম শ্রেণির শিক্ষার্থী স্নেহাশিস/ স্নেহাদ্রিতা, সম্প্রতি তোমাদের শহরে লায়ন্স ক্লাব আয়োজিত প্রতিবন্ধি শিক্ষার্থীদের জন্যে প্যারালিম্পিক (Paralympic) দেখতে গিয়েছিলো। যেখানে অন্ধ শিক্ষার্থীরা কীভাবে নিজেদের প্রতিবন্ধকতা জয় করে কুস্তি, হাই জাম্প, লং জাম্প – এ অংশগ্রহণ করছে দেখে মন্ত্রমুগ্ধ হয়েছ, সেই অভিজ্ঞতার বর্ণনা দিয়ে বিদ্যালয়ের সাময়িক পত্রের জন্যে একটি প্রতিবেদনের খসড়া লেখো।

3. ন্যূনাধিক ৪০ থেকে ৫০ টি শব্দে নিচের যে কোনও একটি প্রশ্নের উত্তর দাও :

- (ক) তুমি ৩৯, উদম পুর কলোনি, শিমলার বাসিন্দা সম্রাট/ সম্রাজ্ঞী মজুমদার। তোমার ঠাকুরদা-ঠাকুমার বিয়ের সুবর্ণজয়ন্তী বর্ষ (Golden Jubilee) উদযাপন উপলক্ষে আগামি ১৫ই এপ্রিল সন্ধ্যাবেলায় একটি প্রীতিভোজের আয়োজন করেছো, সেই বিষয়ের উল্লেখ করে একটি আমন্ত্রনপত্রের খসড়া রচনা করো।

4

অথবা

- (খ) মেঘা চলভাষে (Mobile) রজতকে ফোন করে আগামি বাংলা নববর্ষ উপলক্ষে বন্ধুদের নিয়ে একটি সন্মিলনের (Get-together) পরিকল্পনা করছে, এই বিষয়ে দু’জনের মধ্যে কাল্পনিক সংলাপ লিপিবদ্ধ করো।

বিভাগ – ‘গ’

ব্যাকরণ ও অনুবাদ (Grammar and Translation)

4. নিচের বিকল্পগুলি থেকে সঠিক উত্তরটি বেছে নাও :

- (ক) তৎপুরুষ সমাসে কোন পদের প্রাধান্য প্রতিষ্ঠিত হয়? 1
- (i) পূর্ব পদ (ii) উত্তরপদ
- (iii) উভয় পদ (iv) অন্যপদ
- (খ) যেখানে কর্মকারক কর্তার স্থান অধিকার করে ক্রিয়াকে পরিচালিত করে এবং কর্তা অপ্রধান আসন পায়, তাকে বলে – 1
- (i) কর্তৃবাচ্য (ii) কর্মবাচ্য
- (iii) ভাববাচ্য (iv) কর্মকর্তৃবাচ্য

- (গ) হঠাৎ বিপদ এসে পড়া বোঝাতে বলা হয় – 1
- (i) বিনা মেঘে বজ্রপাত (ii) বিনা মেঘে জল
- (iii) বোঝার ওপর শাকের আঁটি (iv) বাড়াভাতে ছাই
- (ঘ) ‘দুধসাদা’ – এই সমস্তপদটির ব্যাসবাক্য হবে – 1
- (i) দুধ ও সাদা (ii) দুধের সাদা
- (iii) দুধের মত সাদা (iv) দুধ অথচ সাদা
- (ঙ) যে শৃঙ্খলা মানে না তাকে এককথায় বলে – 1
- (i) বেপরোয়া (ii) বেনজির
- (iii) বেলাগাম (iv) উচ্ছৃঙ্খল
5. বাচ্য নির্ণয় করো :
- (i) আকাশে ঘুড়ি উড়ছে। 1
- (ii) কী বিপদেই পড়া গেল! 1
- (iii) গীতাঞ্জলি আমার পড়া আছে। 1
6. এককথায় প্রকাশ করো :
- (i) যে ঘুমাচ্ছে 1
- (ii) কখনও হবে না যা 1
7. ব্যাসবাক্য সহ সমাস নির্ণয় করো :
- (i) স্কুলপালানো 1
- (ii) দশানন 1
- (iii) নবরত্ন 1
8. সার্থক বাক্যে প্রয়োগ করো :
- (i) পোয়াবারো 1
- (ii) মাকাতার আমল 1
9. বাংলায় অনুবাদ করো :
- (i) Shut the front door, please. 1
- (ii) Whose book is this? 1
- (iii) She did not cheat on the exam, as it was the wrong thing to do. 1
- (iv) Stop biting your fingernails. 1
- (v) Be quiet now! 1

বিভাগ – ‘ঘ’

সাহিত্য – গদ্যাংশ ও পদ্যাংশ (Literature)

10. নিচের বিকল্পগুলির থেকে সঠিক উত্তরটি বেছে নাও :

- (ক) ‘বঙ্গদর্শনে’র প্রথম প্রকাশকাল হল – 1
- (i) ১৮৭০ (ii) ১৮৭২

(iii) ১৮৭৭	(iv) ১৮৮৩	
(খ) ‘উত্তর গোষ্ঠ’ কবিতায় শ্রীকৃষ্ণের কোন লীলার কথা রয়েছে?		1
(i) বাল্যলীলা	(ii) গোষ্ঠলীলা	
(iii) বৃন্দাবনলীলা	(iv) রাসলীলা	
(গ) বলাইয়ের বাবা বলাইকে প্রথমে কোথায় নিয়ে গিয়েছিলেন?		1
(i) কাশি	(ii) হরিদ্বার	
(iii) শিমলা	(iv) মুম্বাই	
(ঘ) ‘জগদীশচন্দ্র’ কবিতায় ‘তরু’ শব্দের অর্থ –		1
(i) জল	(ii) গাছ	
(iii) ফুল	(iv) পাথর	
(ঙ) ‘অভাগীর স্বর্গ’ গল্পে কে অভাগীর নামকরণ করেন?		1
(i) অভাগীর বাবা	(ii) বিন্দির পিসি	
(iii) অভাগীর মা	(iv) ঠাকুরদাস মুখুজে	

২০-২৫ টি শব্দে নিচের যে কোনও ছ’টি প্রশ্নের উত্তর দাও :

11. উনিশ শতকের কলকাতার বাবুরা কীভাবে তাঁদের জন্মদিন পালন করতেন? 2
12. “মোচড়িয়া গৌঁফ দুটা বান্ধিলেন ঘাড়ে।” — কার কথা বলা হয়েছে? তার গৌঁফ বাঁধার কারণ কী? 1+1=2
13. ‘নজর’ ও ‘খানসামা’ কী ধরনের শব্দ? এই শব্দ দুটির অর্থ কী? 1+1=2
14. “ঘন বাজে শিঙ্গা বেণু” — কোন কবিতার অংশ? শিঙ্গা কী? (1+1=2)
15. কোন পাঠে রান্নাপুজোর কথা আছে? এই পুজোর নিয়ম কী? 1+1=2
16. জীবনানন্দ দাশ কার কাছ থেকে কাব্যপ্রেরণা লাভ করেছিলেন? জীবনানন্দ রচিত প্রথম কাব্যগ্রন্থ কোনটি? 1+1=2
17. “দেখছেন ভট্টচামশায়, সব ব্যাটারাই এখন বামুন-কায়েত হতে চায়।” — কোন পাঠের অংশ? কে এই কথাগুলো বলেছেন? 1+1=2

কম-বেশি ৪০-৫০ টি শব্দে নিচের যে কোনও দু’টি প্রশ্নের উত্তর দাও :

18. “তারা বাগানের শৌখিন গাছ নয়, তাদের নালিশ শোনবার কেউ নেই।” —
 - (i) কোন পাঠের অংশ? 1
 - (ii) কাদের সম্পর্কে এই কথা বলা হয়েছে? 1
 - (iii) কোন প্রসঙ্গে এই কথা বলা হয়েছে? 2
19. “এই তো জানু পেতে বসেছি পশ্চিমে
আজ বসন্তের শূন্য হাত —”

- | | | |
|-------|---------------------------|---|
| (i) | কোন কবিতার অংশ? | 1 |
| (ii) | কবির নাম কী? | 1 |
| (iii) | কে এই আক্ষেপ করেছেন? | 1 |
| (iv) | তঁার এই আক্ষেপের কারণ কী? | 1 |

20. “ই বানে কেউ মরবে না?” –

- | | | |
|-------|--|-----|
| (i) | কোন পাঠের অংশ? | (1) |
| (ii) | কে এই কথা বলেছে? | (1) |
| (iii) | কাকে উদ্দেশ্য করে বলেছে? | (1) |
| (iv) | এখানে ‘বান’ বলতে কোন বানের কথা বলা হয়েছে? | (1) |

প্রায় ৬০-৯০ টি শব্দে নিচের প্রশ্নগুলির উত্তর দাও :

21. (ক) ‘কালকেতুর ভোজন’ কবিতাটির নামকরণের সার্থকতা বিচার করো। 5

অথবা

(খ) ‘অদ্ভুত আঁধার এক’ কবিতায় দু’টি শ্রেণির মানুষের উল্লেখ করা হয়েছে, তাদের পরিচয় দাও এবং চরিত্র বিশ্লেষণ করো। (2+3=5)

22. (ক) “আজ ছক্কড় মহলে পোহাবারো!” –

- | | | |
|-------|-----------------------------|---|
| (i) | কোন পাঠের অংশ? | 1 |
| (ii) | লেখকের নাম কী? | 1 |
| (iii) | ছক্কড় কী? | 1 |
| (iv) | ছক্কড় মহলে ‘পোহাবারো’ কেন? | 2 |

অথবা

(খ) অভাগীর জীবনের পরিসমাপ্তি কীভাবে ঘটেছিল, বর্ণনা করো। (5)

23. “হে তপস্বী, তুমি একমনা
নিঃশব্দে বাক্য দিলে,” –

- | | | |
|-------|---|---|
| (i) | কোন কবিতার অংশ? | 1 |
| (ii) | কবির নাম কী? | 1 |
| (iii) | এখানে ‘তপস্বী’ কাকে বলা হয়েছে? | 1 |
| (iv) | ‘নিঃশব্দে বাক্য দিলে’ কথাটির অর্থ পরিস্ফুট করো। | 2 |

Total marks: 80

Time: 3 hours

General instructions:

- i) *Approximately 15 minutes is allotted to read the question paper and revise the answers*
- ii) *The question paper consists of 21 questions.*
- iii) *Internal choice has been provided in some questions.*
- iv) *Write the correct question number in your answer sheet to indicate the option being attempted.*

N.B: *Check that all pages of the question paper are complete as indicated on the top left side.*

Unit – I (Reading)

1. Read the passage and answer the questions that follow:

Gangadhar's father gives him a shining silver rupee. He is unable to decide what to do with it. His mother asks him to save the money for later. Find out how Gangadhar finally uses his silver rupee.

'Here's something for you, son,' said my father. I put out my hand. That something was heavy on the palm of my hand. I slowly opened my palm and could not believe my eyes, it was one big, shining, silver rupee! In those days, when my father earned twenty rupees a month, parents did not believe in spoiling their children by giving them pocket money.

My father was a little different. He used to give me an 'anna' every day to buy sweets during lunch-break at school. But even he had never given me a whole rupee.

A rupee was big money in those days. When my mother went shopping with a rupee tucked in the fold of her sari, she could buy a bag of groceries and some sweets for us and still have a few paisa left! No wonder I was so surprised.

'Father, you've given me a whole rupee!' I said.

'Is that so?' he said and laughed out loud. I knew that my father had really meant to give me a rupee. I was so happy I ran all over the house, shouting in joy. However, that was a great mistake. Soon Mother got to know that Father had given a rupee.

'Give it to me. I'll keep it safe in the steel almirah,' she said. I knew that whenever I gave any money to my mother to keep for me, I never saw it again. So I shook my head.

'No! I won't. You won't give it back to me when I ask for it,' I said.

'Your money is all there sitting safely in my box. When you've saved enough, I'll buy you a gold ring,' she replied.

I did want to wear a gold ring on my finger during weddings but wanted to hold on to my rupee too. So, I pushed away her hand and said, 'I don't want a gold ring.'

'Then I'll buy you a silver tumbler. You can drink your milk from it.' But I did not want to give up my rupee, so I said, 'I don't want gold and I don't want silver.'

'What do you plan to do with a whole rupee?' my mother asked.

‘Oh! I’ll buy some laddus, eat bhelpuri or buy those chocolates that the white sahibs eat.’

‘A whole rupee of bhelpuri and sweets! Your stomach will burst!’ yelled my mother.

‘I’ll stick it together with gum,’ I replied and ran out of the house.

On the basis of your reading of the passage, answer the following questions:

- a. Explain how Gangadhar’s father used to spoil his children while he was earning twenty rupees a month.

2

Choose the correct option from the alternatives given:

1x3=3

- b. How much was the pocket money for Gangadhar?

- | | |
|------------------|------------------|
| i. Anna | iii. Fifty paisa |
| ii. Silver rupee | iv. Two rupees |

- c. What is the meaning of ‘white sahibs’ mentioned in the above passage?

- | | |
|-------------------------|--------------------------------------|
| i. Gangadhar’s father | iii. The British gentlemen |
| ii. The foreign friends | iv. Gangadhar’s future father-in-law |

- d. What did the mother want to keep the rupee for?

- | | |
|----------------|---------------|
| i. Sweets | iii. Sari |
| ii. Chocolates | iv. Gold ring |

2. Read the poem and answer the questions that follow:

Turn off the TV!
My father gets quite mad at me;
My mother gets upset-
When they catch me watching
Our new television set.

My father yells, ‘Turn that thing off!’
Mom says, ‘It’s time to study.’
I’d rather watch my favorite TV show
With my best buddy.

I sneak down after homework
And turn the set on low.
But when she sees me watching it,
My mother yells out, ‘No!’

Dad says, ‘If you don’t turn it off,
I’ll hang it from a tree!’
I rather doubt he’ll do it,
‘cause he watches more than me.

On the basis of your reading of the poem, choose the correct answer:

1x3=3

- a. Who is the speaker in the poem?

- | | |
|------------|-----------------|
| i. Father | iii. Child |
| ii. Mother | iv. Grandfather |

- b. Why do the parents get angry?
 - i. Because the child keeps watching Television
 - ii. Because the child keeps playing games
 - iii. Because the child does not sleep on time
 - iv. Because the child throws his things around
- c. What does the poet do after his homework?
 - i. Sleep
 - ii. Studies again
 - iii. Sneak down to watch television
 - iv. Plays video game

Write true or false:

$\frac{1}{2} \times 4 = 2$

- d. The poet's television set is new.
- e. Mother never scolds the poet whenever she finds him watching television.
- f. Father watches television more than the poet.
- g. The poet doesn't believe it when his father says he will hang the television on the tree.

Unit- II (Writing and Applied Grammar)

3. a. Write a report in about 150-200 words on the First Aid Training Camp that was organized by the Red Cross Society in your school.

6

Or

- b. You spent your winter vacation in your native village and it was a jaw dropping experience for you. Start a dialogue in about 100-150 words with your sister narrating about your experience after you came back home.

4. a. Complete the story in about 150-200 words. Give a suitable title to it, follow the starter line given below:

Lanutoshi was hurrying back home from school on a rainy day, he saw a little boy crying on the street alone and...

6

Or

- b. The usage of tobacco by young people especially school going students, has become alarming and life threatening. Write an article in about 150-200 words on the topic, 'The Harmful Effects of Tobacco.'

5. **Complete the second sentence with the right form of the underlined word in the first sentence:**

$1 \times 2 = 2$

- a. Kenei is a tall boy. He is _____ than Bovika.
- b. The momo in this place is good, but don't you think our school canteen's momo is the _____?

6. **Fill in the blanks with suitable conjunctions:**

$1 \times 2 = 2$

- a. Limhathung is not only famous _____ very humble.
- b. We can't succeed _____ we work hard.

7. **Rewrite the sentences as directed:**

$1 \times 2 = 2$

- a. She always goes for a walk _____ the evening. (Use an appropriate Preposition to complete the sentence)
- b. The girl who was injured is in hospital. (Underline the Adjective Clause)

8. Change the following sentences into Passive voice:

1x2=2

- a. I ate the strawberry pie.
- b. Greg is cleaning the compound.

Unit – III (Literature)

9. Choose the correct answer from the alternatives given:

1x10=10

- i. What happened 'once in a blue moon'? (*The Fragrance of the Gods*)
 - a. A motorcycle would pass the village.
 - b. A vehicle would pass the village.
 - c. A train would pass the village.
 - d. There would be a feast in the village.
- ii. When Pasteur was a child, the only way to try to stop the infection from a rabid animal was to _____ the wound.

a. catheterise	b. authorize
c. cauterize	d. pasteurize
- iii. What is the full form of ECO? (*Speech by Severn Suzuki*)
 - a. Environmental Counsel Organisation
 - b. Environmental Children's Organisation
 - c. Environmental Community Organisation
 - d. Environmental Civilization Organisation
- iv. Who was suffering with a malignant tumour of the bone. (*In Celebration of Being Alive*)

a. The trolley's driver	b. The mechanic
c. Dr. Barnard	d. Dr. Barnard's brother
- v. 'The romantic pass of the Notch is a great artery through which the life blood of internal commerce is continually throbbing between Maine, on the one side and the Green Mountains and the shores of St. Lawrence, on the other hand.'
What does the metaphor mean?
 - a. The river flowing through the mountain pass of the Notch provides sustenance to the people on either side of the mountain.
 - b. People living on either side of the mountain through the pass frequently meet and converse with the family.
 - c. The mountain pass is an important route for trading
 - d. The mountain pass is a very scenic route the couples take during their travel.
- vi. Wordsworth personifies _____, addressing it as the mother of fresh thoughts and good health.

a. Sheep	b. Stealth
c. Night	d. Sleep

- vii. Which line from the poem indicate that old folks are not self-conscious? (*Old Folks Laugh*)
- Saliva glistens in the corners of their mouths.
 - When old folks laugh, they free the world.
 - The hollers rise up and spill over any way they want.
 - Their heads wobble on brittle necks.
- viii. What is the poet experiencing in the poem, '*Closed Path*'?
- The end of a journey.
 - Writer's block.
 - Mid-life crisis.
 - Doubts about his faith.
- ix. Who brought potatoes to the Annex?
- Mr. Koopius
 - Mr. Kraler
 - Mr. Vossen
 - Mr. Van Hooen
- x. What did Mr. Dussel do with his birthday presents?
- He hid all his presents
 - He sold off his presents
 - He displayed his presents
 - He shared his presents with Peter

Answer the following questions in about 20-25 words: 2x5=10

- What was Severn referring to when she exclaimed, '*I wonder if they will even exist for my children to see.*'
- What is the poet's idea of hell? (*Prayer of the Meek*)
- To what does the poet compare his new found ability to sing? (*Closed Path*)
- What are the things that Anne got for her birthday before going into the Annex and which was the 'nicest' present?
- What is the difference between Anne's mother and father, according to Anne Frank?

Answer the following questions in about 40-45 words: 4x5=20

- '*Pasteur had never been able to forget the horror of that moment*' (*Man against Virus*)
 - What had horrified Pasteur? (2)
 - What did witnessing this moment make Pasteur resolve in the future? (2)

Or

- '*Grant that none should again taste
The pain thou hast allowed to come our way.
Let no more blood be shed
Be it friend or foe,*' (*Prayer of the Meek*)
 - What was the pain that God had allowed to come? (1)
 - Why does the poet pray for bloodshed to stop? (3)
- a. '*Every time I write to you, something special has happened, usually it is unpleasant, but this time however, something wonderful is going on.. There is bad news as well.*' (*Diary of a Young Girl*)

- i. What wonderful things were going on? (2)
- ii. What was the bad news about Mr. Koopius? (2)

Or

- b. Who was the eighth person in the Secret Annex? Describe him. (1+3=4)
- 17. How does the writer contrast the young man with the eldest daughter of the family?
(*The Ambitious Guest*) (4)
- 18. 'Even thus last night, and two nights more I lay,
And could not win thee, Sleep! By any stealth' (To Sleep)
 - i. How has he spent the two previous nights? (1)
 - ii. In what context is the word 'stealth' used here? (1)
 - iii. What is the poet longing for? (2)
- 19. 'Suddenly, I realized that these two children had given me a profound lesson in getting
on with the business of living.' (In Celebration of Being Alive)
 - i. What is the 'business of living'? (2)
 - ii. What was Dr. Barnard's thought on suffering? (2)

Read the lines and answer the questions that follow:

- 20.a. 'They were driven by giant ape-like men with red faces.' (*Fragrance of the Gods*)
 - i. Who were the men Toshi is talking about? **1**
 - ii. Why were they driving through Toshi's village? **2**
 - iii. Why do you think their faces were red? **2**

Or

- b. 'They have spent their
content of simpering,
holding their lips this
and that way, winding
the lines between their
brows.'
- i. Who is 'they' here? (1)
- ii. How have the old folks spent their lives when they were young? (3)
- iii. Are the old folks still living a pretentious life? (1)
- 21. What are the anti-Jewish laws imposed by the Nazis? How do you think it affected the
lives of the Jewish people? **2+3=5**

2025

FOUNDATION OF INFORMATION TECHNOLOGY

Total marks : 70

Time : 3 hours

General Instructions :

- i) Approximately 10 minutes is allotted to read the question paper and revise the answers.
- ii) All questions are compulsory.
- iii) The question paper consists of 32 questions.
- iv) Internal choice has been provided in some questions.
- v) Marks allocated to every question are indicated against it.

N.B: Check to ensure that all pages of the question paper are complete as indicated on the top left side.

Choose the correct answer from the given alternatives:

1. Which term identifies a specific computer on the web and the main page of the entire site? 1
(a) URL (b) Website address
(c) Hyperlink (d) Domain name
2. Any two computers connected through a telephone line should be connected with _____ on both sides. 1
(a) printer (b) scanner
(c) MODEM (d) wifi
3. What is the maximum number of characters in a password? 1
(a) 14 (b) 64
(c) 65 (d) 255
4. Reports can be prepared from _____. 1
(a) tables (b) queries
(c) both tables and queries (d) form
5. One can assemble data through a _____. 1
(a) table (b) report
(c) query (d) form
6. Which of the following tags is not an empty tag? 1
(a) <p> (b)

(c) <hr> (d)
7. Which of the following tags is used for italicizing the text? 1
(a)
 (b)
(c) (d)

8. One can set the size of the table based of _____. 1
 (a) pixels (b) percentage
 (c) number (d) both pixels and percentage
9. Bulleted list is known by another name which is _____. 1
 (a) Unordered list (b) Numbered list
 (c) Ordered list (d) None of these
10. _____ short for malicious software, is a software designed to infiltrate a computer system without the owner's informed consent. 1
 (a) Blog (b) Attachments
 (c) Spam (d) Malware

Answer the following questions in about 10-20 words:

11. How can one find people on the internet? 2
12. What are CC and BCC in E-mail? 2
13. Define Animation. 2
14. Define Database. 2
15. What is a foreign key? 2
16. What is the purpose of using HTML? 2
17. What is a subscript? 2
18. What is the difference between <p> tag and
 tag? 2
19. What is mailto? 2
20. How can one insert HTML text file in HTML file? 2
21. What is meant by IMG and SRC? 2

Answer the following questions in about 20-30 words:

22. a. What are the basic elements of search engine? 3
 Or
 b. What are the benefits of video conferencing?
23. Explain any three field properties in database. 3
24. a. What are the different ways provided by MS-Access to restrict input? 3
 Or
 b. What is a Validation Rule? Explain the two types of validation rules.
25. What is HTML tag? Explain the two types of tags in HTML. 3
26. How can one create a checkbox in HTML files? Explain with examples. 3

27. a. Distinguish between cell spacing and cell padding.

Or

3

- b. Explain any three basic elements needed to create a table in HTML.

Answer the following questions in about 50-70 words:

28. a. What is a URL? What are its components?

Or

4

- b. What is the difference between wired and wireless networking technology?

29. What is table in MS-Access? What are the different elements of a table in MS-Access?

4

30. What is <hr> tag in HTML? Explain its attributes.

4

31. a. What is <input> tag? Explain any three attributes of <input> tag.

Or

4

- b. What is meant by HTML forms? Explain its attributes.

32. a. What is a spam? How do spammers get e-mail address?

Or

4

- b. Discuss any four security requirements under E-commerce.

**2025
MUSIC**

Total marks : 70

Time : 3 hours

General instructions:

- i) *Approximately 14 minutes is allotted to read the question paper and revise the answers.*
- ii) *All questions are compulsory.*
- iii) *The question paper consists of 32 questions.*
- iv) *Marks allocated to every question are indicated against it.*
- v) *Write the correct question number in your answer sheet to indicate the option being attempted.*

N.B: *Check to ensure that all pages of the question paper is complete as indicated on the top left side.*

SECTION - A : (Ethnic Music)

- 1. The instruments that Nagas use in their folk music are quite: 1
 - a) normal in nature b) cultural in nature
 - c) elementary in nature d) religious in nature

- 2. Naga folk songs narrate stories of famous: 1
 - a) ancestors and warriors b) ancestors and heroes
 - c) ancestors and incidents d) ancestors and lovers

- 3. Which instrument is mainly played inside the dormitory 'zuki' ? 1
 - a) bamboo flute b) bamboo sounding box
 - c) bamboo mouth organ d) tati

- 4. What is leaf music? 2

- 5. Write short notes on **any two** of the following: 2½+2½ =5
 - a) trumpet b) cup violin
 - c) bamboo sounding box d) log drum

SECTION - B : (Western Music)

- 6. On which degree of the scale is the tonic triad built? 1
 - a) 3rd degree b) 5th degree c) 1st degree d) 4th degree

7. Identify the given interval:

1



- a) minor third b) major third
c) minor second d) perfect fourth

8. Which minor key has two flats in its key signature?

1

- a) G minor b) D minor c) A minor d) E minor

9. One quaver triplet () is equivalent to a :

1

- a) dotted crotchet b) crotchet
c) minim d) dotted quaver

10. Name the rest used for a whole bar of silence.

1

- a) crotchet rest b) quaver rest
c) semibreve rest d) minim rest

11. Name the given note:

1



- a) G b) A c) F d) D

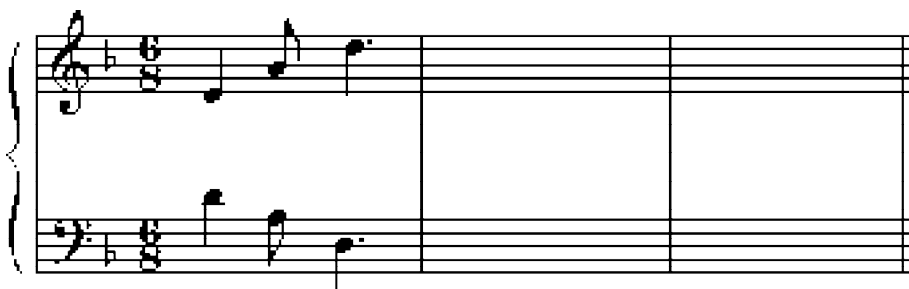
12. How many semiquavers are required to make a crotchet?

1

- a) 5 b) 8 c) 4 d) 2

13. Write two more repeats of the given bar to make ostinato that move in contrary motion:

2



14. Label the triads with roman numerals and chord symbols to show the chord progression:

2



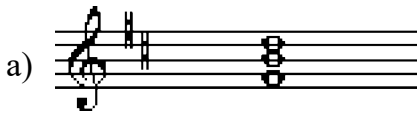
15. Draw brackets to show the sequence. Then label it real or tonal: 2



16. Work out the keys of the given tunes: 1+1=2

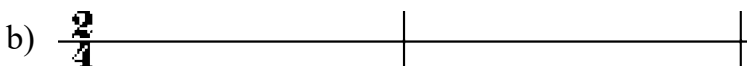
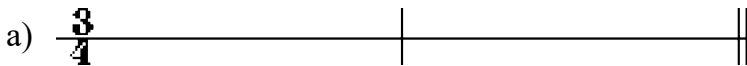


17. Label the following: 1+1=2



18. Write the key signature and the tonic triad in the root, first inversion and second inversion in the key of Bm in the bass stave. 2

19. Write some quaver triplets to agree with each time signature. 1+1=2



20. a) Write the tonic in the last bar to agree with the anacrusis. 1+1=2



- b) Write a rest in the last bar to agree with the anacrusis.



- [illegible]

-

-

- a)

-
- Musical notation for the bass line of 'The Rose Tree'. The key signature has one flat (B-flat). The melody consists of eighth and sixteenth notes, with triplets indicated by a '3' over the notes. The piece ends with a double bar line and repeat dots.

-

26. Using crotchets, write a four-part chord (SATB) in the key of Em. Double the root and use key signature. 3

27. a) Use the root of each triad shown by the roman numerals to write a bass line. 3

- b) Use notes from the tonic or dominant triads shown by the roman numerals to write a tune above the staff.

28. Write triads on the tonic and dominant degrees of the G harmonic minor scale descending, using semibreves in the bass staff. Label the triads with chord symbols and roman numerals. Use key signature. 3

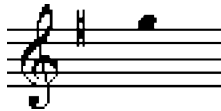
29. Draw the following intervals up from the given notes as directed. 3

30. a) Using quavers, write a broken chord using Dm tonic triad, going up. Use patterns of three notes each time. Finish on the first 'A' above the stave .

$$1\frac{1}{2} + 1\frac{1}{2} = 3$$



- b) Using quaver triplets, write a broken chord using Em tonic triad, going down. Use patterns of three notes each time. Finish on the first 'B' below the stave .



31. Using semibreves, draw the following scales in the bass stave as directed.

$$5 \times 1 = 5$$

- G natural minor scale, going up.
- D melodic minor scale, going up.
- F major scale, going up.
- B harmonic minor scale, going down.
- E harmonic minor scale, going down.

32. Look at the following music and answer the questions that follow.

$$5 \times 1 = 5$$



- Identify the key the piece is in.
- Name the type of cadence that ends this piece.
- What is the interval between the two notes marked with asterisks (*) in bars 5-6?
- Is this piece in simple or compound time?
- What is the total number of counts for the notes in the last bar?

2025
HOME SCIENCE

Total marks : 70

Time : 3 hours

General instructions :

- i) *Approximately 15 minutes is allotted to read the question paper and revise the answers.*
- ii) *All questions are compulsory.*
- iii) *The question paper consists of 32 questions.*
- iv) *Marks allocated to every question are indicated against it.*

N.B: *Check that all pages of the question paper is complete as indicated on the top left side.*

Choose the correct answer from the given alternatives:

1. A child has ____ number of milk teeth which are temporary. **1**
(a) 15 (c) 25
(b) 20 (d) 30
2. Which of the following is an example of indoor play material? **1**
(a) Tricycle (c) Clay and sand
(b) Colouring books (d) Football
3. According to Valentine, play is a kind of ____ in work. **1**
(a) amusement (c) art
(b) creativity (d) skills
4. Lack of iodine in the body leads to **1**
(a) Anaemia (c) Goitre
(b) Ricket (d) Scurvy
5. Which of the following is not a body-building food? **1**
(a) Milk and milk products (c) Pulses and beans
(b) Fruits and vegetables (d) Meat and eggs
6. Oil, honey are examples of _____ food. **1**
(a) Perishable (c) Degradable
(b) Semi-perishable (d) Non- perishable
7. Which of the following is considered as human resources? **1**
(a) Time (c) Money
(b) Property (d) Public parks

- | | | |
|-----|---|--------------------|
| 8. | ISI mark is found in which food product? | 1 |
| (a) | Baby milk powder | (c) Fruit juice |
| (b) | Jam and jelly | (d) Eggs |
| 9. | Soaps which contain resin and produce more lather are | 1 |
| (a) | Toilet soap | (c) Medicated soap |
| (b) | Mild soap | (d) Hard soap |
| 10. | Stains like ink and rust are removed by | 1 |
| (a) | petrol | (c) ammonia |
| (b) | oxalic acid | (d) chalk |

Answer the following questions in 20-30 words :

- | | | |
|-----|--|---|
| 11. | Define language development. At what age is a child able to comprehend and understand command? | 2 |
| 12. | Give two advantages of play. | 2 |
| 13. | State two negative influence of television on children. | 2 |
| 14. | Why do people living on sea-shore have a low possibility of the deficiency of iodine? | 2 |
| 15. | What is fortification? Give one example. | 2 |
| 16. | List down two factors that affects meal planning. | 2 |
| 17. | Expand RDA and ICMR. | 2 |
| 18. | What are semi-perishable foods? Give examples. | 2 |
| 19. | Give two importance of proper storage of food. | 2 |
| 20. | What are resources? Name the two types. | 2 |
| 21. | Enumerate two factors that affect wise use of resources. | 2 |
| 22. | Distinguish between real direct and real indirect income. | 2 |

Answer the following questions in 40-60 words :

- | | | |
|-----|--|---|
| 23. | Discuss the social development of a child from 1-2 years. | 3 |
| 24. | (a) Write three factors that affects the emotional development of a child. | |

Or 3

- | | | |
|-----|---|---|
| | (b) Write three significance of language development. | |
| 25. | Write three ways of supplementing family income. | 3 |

26. Enumerate any three problems faced by the consumer while purchasing commodities from the shop. **3**
27. (a) 'Misleading advertisements lure the customer easily'. Justify the statement. **3**
Or
(b) Mention any six rights of a consumer.
28. Explain the various steps of flower arrangements. **3**
29. (a) What is stain? State two precautionary measures while using a stain remover. **3**
Or
(b) How is soap prepared by hot method? Explain the process.

Answer the following questions in 80-100 words :

30. (a) Write two functions of vitamin C and two effects of its deficiency. Name two sources of vitamin C. **5**
Or
(b) Write two functions of protein in our body. Which age group is more vulnerable to the deficiency of protein? Name two diseases caused by deficiency of protein.
31. (a) Describe briefly the various elements of art. **5**
Or
(b) Enumerate the various principle of arts.
32. (a) Give five points of differences between detergent and soap. **5**
Or
(b) What aspects of quality check of apparel will you consider while purchasing ready-made garments?

2025
BOOK-KEEPING & ACCOUNTANCY

Total marks : 70

Time : 3 hours.

General instructions:

- i) Approximately 15 minutes is allotted to read the question paper and revise the answers.
 - ii) The question paper consists of 28 questions. All questions are compulsory.
 - iii) Internal choice has been provided in some questions.
 - iv) Marks allocated to every question are indicated against it.
- N.B:** Check that all pages of the question paper is complete as indicated on the top left side.

Choose the correct answer from the given alternatives:

1. The opening stock of M/s Tata as on 31st December 2021 stood at ` 16,600 and direct expenses were ` 2,400 whereas the sales for the period were ` 25,000. The gross profit will be **1**
(a) ` 19,000 (b) ` 6,000
(c) ` 44,000 (d) ` 8,400
2. The statement of assets and liabilities is a **1**
(a) balance sheet (b) trial balance
(c) trading account (d) profit & loss account
3. This book is also known as deposit slip. **1**
(a) pass book (b) cheque book
(c) pay-in-slip book (d) cash memo
4. The word 'overdraft' indicates **1**
(a) minus balance (b) plus balance
(c) credit balance as per pass book (d) debit balance as per cash book
5. Debit balance as per cash book is a/an **1**
(a) minus balance (b) plus balance
(c) overdraft as per cash book (d) overdraft as per pass book
6. A bill of exchange is **1**
(a) a promise to pay (b) a request to pay
(c) an order to pay (d) a favour to pay

7. Mr. A draws a bill on Mr. B. Mr. A endorsed the bill to Mr. C. Who is the payee in this situation? 1
 (a) Mr. C (b) Mr. B
 (c) Mr. A (d) both Mr. A and Mr. C

8. Wages paid to the firm's own workman for making certain additions to machinery were posted to wages account. It is an error of 1
 (a) omission (b) commission
 (c) principle (d) compensating

9. Depreciation is calculated on 1
 (a) wasting assets (b) current assets
 (c) fictitious assets (d) fixed assets

10. Depreciation on original cost is also referred to as 1
 I) straight line method
 II) fixed installment method
 (a) only I is true (b) only II is true
 (c) both I and II are true (d) both I and II are false

Answer the questions in about 20-30 words:

11. What is the purpose of preparing a balance sheet? 2

12. Ms. Asen is a salaried employee and receives a salary of ` 10,000 per month. She plans to save ` 2,000 every month which she wants to invest after two years in gold. Suggest the best saving option for her. Justify your reason. 2

13. What is e-banking? 2

14. What is meant by transposing figure? 2

15. What are compensating errors? 2

16. Mention any two special features of depreciation. 2

Answer the questions in about 30-50 words:

17. Explain three differences between profit and loss account and balance sheet. 3

18. Mention and explain any three characteristics of balance sheet. 3

19. Write any three different types of payments made by the bank on our behalf. 3

20. Explain three advantages of bills of exchange. 3

21. Ato purchased a computer on January 1 for ` 50,000 which have an estimated life of 10 years and its estimated scrap value is ` 5,000. Calculate the depreciation for a year and also find the rate of depreciation. $1\frac{1}{2}+1\frac{1}{2}=3$
22. Explain any three limitations of straight line method of depreciation. **3**

Answer the questions in about 70-100 words:

23. a. Explain any five points to be considered while preparing final accounts. **5**
- Or**
- b. Prepare trading, profit and loss account and balance sheet from the following trial balance of Kohima Tyres Pvt. Ltd. as on 31st March, 2023.

Particulars	Debit Balances `	Credit Balances `
Capital		70,000
Buildings	60,000	
Purchases and Sales	17,000	46,000
Carriage	350	
Wages	5,000	
Creditors		4,000
Salaries	4,000	
Bad debts	650	
Cash at bank	25,000	
Stock	8,000	
	1,20,000	1,20,000

Closing stock was valued at ` 900.

24. a. Explain the different types of account that can be opened in the bank. **5**
- Or**
- b. Explain the new services being provided by banks through computerized equipments.
25. a. Explain the different steps for creation of bank reconciliation statement. **5**
- Or**
- b. Prepare a bank reconciliation statement from the following information.
- Bank overdraft as per cash book on August 30, 2024 was ` 2,000
 - Cheque issued but not presented for payment ` 1,250
 - The bank charged ` 25 on account of bank charges not entered in the cash book
 - Interest charged by the bank but not entered into the cash book ` 25
 - Interest on investment collected by the bank and credited in the pass book ` 1,000.

26. a. Differentiate between bill of exchange and promissory note.

Or

5

b. On September 30, 2023, Atso draws a bill of ` 1,500 on Nise. Nise accepts this bill immediately and returns it to Atso. This bill is due after 3 months after date.

Prepare journal entries in the books of both the parties.

27. a. Explain the errors of commission.

Or

5

b. Rectify the following errors assuming that a suspense account was opened.

i) Credit sales to Lasu of ` 7,000 were posted to the credit of his account

ii) Credit purchases from Abenle of ` 9,000 were posted to the debit of her account for ` 6,000

iii) Goods returned to Hadibe of ` 4,000 were posted to the credit of his account

iv) Goods returned to Hilo of ` 1,000 were posted to the debit of his account as ` 2,000

v) Cash sales of ` 2,000 were posted to the debit of sales account as ` 5,000.

28. a. Explain any five needs and importance of charging depreciation.

Or

5

b. Verato and Bros. purchased a machine for extracting fruit juice at ` 35,000 on January 1, 2018 and spent ` 2,000 on its installation. The estimated life of the machine is 8 years after which its breakup value will be only ` 5,000.

Using the straight line method prepare machinery account for the first 3 years assuming that the accounts are closed on December 31 every year.

2025
ENVIRONMENTAL EDUCATION

Total marks : 80

Time : 3 hours

General instructions:

- i) *Approximately 15 minutes is allotted to read the question paper and revise the answers.*
- ii) *The question paper consists of 32 questions. All questions are compulsory.*
- iii) *General option questions are provided in 5 and 6 marks questions.*
- iv) *Marks allocated to every question are indicated against it.*
- v) *Write the correct question number in your answer sheet to indicate the option being attempted.*

N.B: *Check that all pages of the question paper is complete as indicated on the top left side.*

1. Choose the correct answer from the given alternatives: 10x1=10

- (i). Planting ornamental and fruit trees in urban areas on public and vacant land is
 - (a) Agro forestry
 - (b) Urban forestry
 - (c) Commercial forestry
 - (d) Forestry
- (ii). Water logging leads to
 - (a) Soil pollution
 - (b) Air pollution
 - (c) Drought
 - (d) Deforestation
- (iii). Citrus growers in China place nests of predacious ants to protect
 - (a) Mango trees
 - (b) Banana trees
 - (c) Orange trees
 - (d) Apple trees
- (iv). The most essential requirement for the survival of man is
 - (a) Hot air
 - (b) Moist air
 - (c) Warm air
 - (d) Clean air
- (v). Release of unwanted sound in the atmosphere is called
 - (a) Noise pollution
 - (b) Radiation pollution
 - (c) Nuclear pollution
 - (d) Soil pollution
- (vi). Fuel from recently lifeless or living biological material is
 - (a) Biofuel
 - (b) Fossil fuel
 - (c) Natural gas
 - (d) Petrol
- (vii). Which of the following is not a cause of natural disaster?
 - (a) Cyclone
 - (b) Earthquake
 - (c) Floods
 - (d) Leakage from chemical industries

- (viii). While purchasing pulses, flour, edible oil, ghee, rice etc. consumers should look for
- | | |
|---------------|--------------|
| (a) Wool mark | (b) Hallmark |
| (c) ISI mark | (d) Agmark |
- (ix). WWF stand for
- | | |
|---------------------|---------------------|
| (a) World Wide Fund | (b) World Wide Fun |
| (c) Wide World Fund | (d) Wild World Fund |
- (x). Water harvesting is the activity of direct collection of
- | | |
|------------------|-----------------|
| (a) Sea water | (b) Rain water |
| (c) Ground water | (d) River water |

Answer the following questions in one word or one sentence not exceeding 15 words:

- | | |
|---|---|
| 2. Write one advantage of rainwater harvesting. | 1 |
| 3. What is electronic waste (E-waste)? | 1 |
| 4. Name any two sources of energy available to us. | 1 |
| 5. Who is a consumer? | 1 |
| 6. Name any two factors responsible for degradation and loss of wildlife. | 1 |
| 7. Write one step to stop cruelty to animals. | 1 |

Answer the following questions in about 20 - 30 words:

- | | |
|---|---|
| 8. Write two advantages of afforestation. | 2 |
| 9. Differentiate between poaching and hunting. | 2 |
| 10. Name any two sources of soil pollution. | 2 |
| 11. Define energy crisis. | 2 |
| 12. Write two effects of ozone depletion. | 2 |
| 13. State any two damages caused by floods. | 2 |
| 14. Mention any two effects of earthquakes. | 2 |
| 15. Write any two disadvantages of using fossil fuel. | 2 |

Answer the following questions in about 30 - 50 words:

- | | |
|---|---|
| 16. Write any three examples of tribal knowledge supporting conservation of nature. | 3 |
| 17. Write three benefits of aquaculture. | 3 |

- | | |
|---|---|
| 18. Mention three effects of thermal pollutants. | 3 |
| 19. Write three effects of air pollution on human beings. | 3 |
| 20. List three strategies to combat acute shortage of energy. | 3 |
| 21. Write any three reasons behind the depletion of forest cover. | 3 |
| 22. State any three uses of compressed natural gas (CNG). | 3 |

Answer any three from the following questions in about 50-60 words:

- | | |
|---|---|
| 23. Mention any five importance of coral reefs. | 5 |
| 24. Mention any five consequences of deforestation. | 5 |
| 25. Write any five major effects of drought. | 5 |
| 26. Mention five man-made factors of landslides. | 5 |
| 27. List any five ways through which food article is adulterated. | 5 |
| 28. Mention any five consumer's duties for making correct choices while buying different items. | 5 |

Answer any two of the following questions in about 70-100 words:

- | | |
|---|--------|
| 29. What is soil erosion? Write five methods of controlling soil erosion. | 1+5= 6 |
| 30. Write six objectives of Biosphere Reserve Programme (BRP). | 6 |
| 31. What is oil spill? Write five causes of oil spill. | 1+5=6 |
| 32. Mention any six measures to control noise pollution. | 6 |

2025

Information Technology ES (Vocational)

Total marks: 50

Time: 2 hours

General instructions:

- i) *Approximately 10 minutes is allotted to read the question paper and revise the answers.*
- ii) *All questions are compulsory.*
- iii) *The question paper consists of 21 questions.*
- iv) *Marks allocated to every question are indicated against it.*

N.B: *Check that all pages of the question paper are complete as indicated on the top left side.*

1. Choose the correct answer from the given alternatives: 10x1=10

- i. Communicating our emotions through touch such as formal handshake is known as
 - (a) Haptics
 - (b) Paralinguistics
 - (c) Chronemics
 - (d) Chromatics
- ii. The act of performing something without expecting any external rewards is known as
 - (a) Self-awareness
 - (b) Self-regulation
 - (c) Intrinsic motivation
 - (d) Extrinsic motivation
- iii. Which of the following is an artificial intelligence (AI) based computer tool?
 - (a) Task view
 - (b) Cortana
 - (c) Power Mode
 - (d) Launch Bar
- iv. Managerial functions of an entrepreneur includes
 - (a) Production
 - (b) Marketing
 - (c) Accounting
 - (d) Staffing
- v. Which of the following is not an objective of sustainable development goals?
 - (a) Poverty
 - (b) Policies
 - (c) Prosperity
 - (d) Peace
- vi. The feature in writer, which enables one to move quickly through a document and find specific items is called
 - (a) Side bar
 - (b) Tool bar
 - (c) Navigator
 - (d) Status bar
- vii. In spreadsheet, by default, number and data date is aligned to
 - (a) Center in calc
 - (b) Justified
 - (c) Left in calc
 - (d) Right in calc
- viii. The singular form of data is called
 - (a) Bytes
 - (b) Bits
 - (c) Integer
 - (d) Datum
- ix. A search within the database is called
 - (a) Table
 - (b) Form
 - (c) Queries
 - (d) Report

- x. Carbon dioxide fire extinguishers are usually ineffective on
- | | |
|-------------------|-------------------|
| (a) Class A fires | (b) Class B fires |
| (c) Class C fires | (d) Class D fires |

Answer the following questions in one word or one sentence:

- | | |
|--|---|
| 2. What is survival stress? | 1 |
| 3. What is the short cut key for 'Find and Replace'? | 1 |
| 4. What is title bar? | 1 |
| 5. What is active cell? | 1 |
| 6. What are functions? | 1 |
| 7. What is data redundancy? | 1 |
| 8. What are fields in database? | 1 |
| 9. Define an accident at workplace. | 1 |

Answer the following questions in 20-50 words:

- | | |
|---|-------|
| 10. What is visual communication? Give any two examples. | 1+1=2 |
| 11. What is antivirus software? Name one antivirus software. | 1+1=2 |
| 12. Write the two steps to add an image to a document using drag and drop method. | 2 |
| 13. Differentiate between absolute and mixed cell reference. | 2 |
| 14. Write two uses of hyperlinks in calc. | 2 |
| 15. State one use of relational database management system? Name one popular RDBMS. | 2 |
| 16. What is workplace emergency? Give an example. | 1+1=2 |
| 17. State two reasons for muscle strains in a workplace. | 2 |

Answer the following questions in 60-100 words:

- | | |
|---|-------|
| 18. Define a template. Write the three steps to create a template category. | 1+3=4 |
| 19. a. Explain briefly the four selection mode available in calc. | 4 |

Or

- | | |
|---|---------|
| b. Write two steps each for changing the default name and color of a sheet tab in calc. | (2+2=4) |
| 20. a. What are forms? Write three steps for modifying forms in calc. | |

Or

- | | |
|---|-------|
| b. What is a database? Write the steps for sorting of data. | 1+3=4 |
| 21. List any four steps to be followed on hearing the fire alarm. | 4 |

2025

Tourism & Hospitality (Vocational)

Total marks : 50

Time : 2 hours

General instructions :

- i) *Approximately 10 minutes is allotted to read the question paper and revise the answers.*
- ii) *All questions are compulsory. The question paper consists of 21 questions.*
- iii) *Marks allocated to every question are indicated against it.*
- iv) *Write the correct question number in your answer sheet to indicate the option being attempted.*

N.B: *Check to ensure that all pages of the question paper are complete as indicated on the top left side.*

1. Choose the correct answer from the given alternatives: 10x1=10

- i. One of the social factors which influences customer choice and preference is
 - (a) Social class system
 - (b) Family
 - (c) Beliefs
 - (d) Lifestyle
- ii. The formal standards of proper or polite behaviour in society, among members of a specific profession, or in a particular field of activity is known as
 - (a) Conduct
 - (b) Mannerism
 - (c) Behavior
 - (d) Etiquette
- iii. The Maternity Benefits Acts of 2017 provides maternity leave of
 - (a) 12 weeks
 - (b) 15 weeks
 - (c) 26 weeks
 - (d) 36 weeks
- iv. The intangible creations are known as
 - (a) Intellectual property
 - (b) Copyright protection
 - (c) Industrial designs
 - (d) Trade secret
- v. Which of the following is a cultural method of pest control employed in food and beverage sector?
 - (a) Sticky boards
 - (b) Fly papers
 - (c) Mulching
 - (d) Traps
- vi. It is a detailed guide on how to perform work safely.
 - (a) Hazard analysis
 - (b) Safety precautions
 - (c) Safety information
 - (d) Safe work procedure
- vii. A list of items that may be ordered together for certain price.
 - (a) Main course
 - (b) Set menu
 - (c) Buffet
 - (d) Menu
- viii. Our emotional, mental, physical and social response to any perceived threats or demands is known as
 - (a) Stress
 - (b) Stressor
 - (c) Eustress
 - (d) Distress
- ix. It is the first screen that appears after booting of the computer system.
 - (a) Wallpaper
 - (b) Taskbar
 - (c) Icons
 - (d) Desktop

- x. Which of the following contradicts the principle of sustainable development?
- | | |
|------------------------------|------------------------------|
| (a) Environmental protection | (b) Unrestrained development |
| (c) Social inclusion | (d) Cultural diversity |

Answer the following questions in one word or one sentence:

- | | |
|--|---|
| 2. Define customer-centricity. | 1 |
| 3. What is POSH? | 1 |
| 4. Mention any two services available for senior citizens in a hotel. | 1 |
| 5. What is trade secret? | 1 |
| 6. What is meant by food standard? | 1 |
| 7. Why is self-regulation important in life? | 1 |
| 8. Name any two Antivirus software. | 1 |
| 9. List any two global development goals as stated in the Agenda 2030. | 1 |

Answer the following questions in 20-50 words:

- | | |
|--|-------|
| 10. What is hospitality sector? Give any two examples. | 1+1=2 |
| 11. What is telephone etiquette? Write any two telephone etiquettes to be followed in food and beverage areas. | 1+1=2 |
| 12. Write any two gender neutral behavior to be followed in a work place. | 2 |
| 13. What is HACCP? Write one principle of HACCP. | 1+1=2 |
| 14. Suggest two ways to improve communication among colleagues in hospitality sector. | 2 |
| 15. Write any two approaches to resolve complaints from guest. | 2 |
| 16. Differentiate between specific and non-specific feedback. | 2 |
| 17. Briefly explain two entrepreneurial functions of an entrepreneur. | 2 |

Answer the following questions in 60-100 words:

- | | |
|--|-------|
| 18. a. Define customer satisfaction. Write three benefits of measuring customer satisfaction. | |
| Or | 1+3=4 |
| b. Define hospitable conduct. Write three Do's and Don'ts to be followed while dealing with guest. | |
| 19. a. Briefly explain four ways to motivate women and utilize their skills in the workplace. | |
| Or | 4 |
| b. Explain briefly any four types of intellectual property. | |
| 20. What is cross-contamination? State any three ways to avoid cross-contamination. | 1+3=4 |
| 21. Explain four standard safety procedures for floor safety. | 4 |

Total number of printed pages : 2

NB-T/R(V)/1

2025
Retail (Vocational)

Total marks : 50

Time : 2 hours

General instructions :

- i) *Approximately 10 minutes is allotted to read the question paper and revise the answers.*
- ii) *All questions are compulsory.*
- iii) *The question paper consists of 21 questions.*
- iv) *Marks allocated to every question are indicated against it.*
- v) *Write the correct question number in your answer sheet to indicate the option being attempted.*

N.B: *Check to ensure that all pages of the question paper are complete as indicated on the top left side.*

1. Choose the correct answer from the given alternatives: 10x1=10

- i. Which of the following is a factor that affects effective communication?
 - a) Completeness
 - b) Clarity
 - c) Context
 - d) Correctness
- ii. The act of performing something without expecting any apparent external rewards is known as
 - a) Extrinsic motivation
 - b) Intrinsic motivation
 - c) Self-motivation
 - d) Self-regulation
- iii. It is a new AI based tool for computer search and also can be used for voice commands.
 - a) Cortana
 - b) Icons
 - c) Taskbar
 - d) Operating System
- iv. Why is it important to adopt sustainable development?
 - a) For economic prosperity
 - b) For peaceful coexistence
 - c) To save poor nations
 - d) To save ecology and environment
- v. Who is considered as a 'king' in today's fast-paced world?
 - a) Consumers
 - b) Retailers
 - c) Wholesalers
 - d) Distributors
- vi. One of the most crucial aspects of retail space design is
 - a) signage
 - b) shelving
 - c) lighting
 - d) storing
- vii. It is a step in delivery that can significantly impact the experience of the customers.
 - a) Packaging
 - b) Services
 - c) Shipping
 - d) Transportation
- viii. Which of the following is not a cause of emergency in retail stores?
 - a) Insect bites
 - b) Explosion
 - c) Electrocution
 - d) Racking

- ix. The general duty of the employer is to take every reasonable precaution for the protection of
- | | |
|--------------|-------------|
| a) Customers | b) Workers |
| c) Partners | d) Managers |
- x. It helps the team to connect, perform better and become stronger as professionals.
- | | |
|--------------------|--------------------------|
| a) Share work | b) Realistic commitments |
| c) Proper planning | d) Value system |

Answer the following questions in one word or one sentence:

- | | |
|--|---|
| 2. Define haptics. | 1 |
| 3. State any two factors that are considered to be causes of stress in modern times. | 1 |
| 4. What is computer software? | 1 |
| 5. Write one objective of Sustainable Development Goals. | 1 |
| 6. Define retail operations. | 1 |
| 7. What is direct store delivery? | 1 |
| 8. What does Occupational Safety and Health (OSH) focus on? | 1 |
| 9. State one example of discrimination in retailing. | 1 |

Answer the following questions in 20-50 words:

- | | |
|--|-------|
| 10. Briefly explain two advantages of choosing entrepreneurship as a career. | 2 |
| 11. Write any two guidelines to be followed for safe handling of products while shelving. | 2 |
| 12. Mention any two core competencies required for store operation assistants. | 2 |
| 13. Briefly explain two common modes of retail transportation. | 2 |
| 14. What is online shopping? Name any two prominent delivery services available in Nagaland. | 1+1=2 |
| 15. Suggests two ways to maintain hygiene in a retail store. | 2 |
| 16. Differentiate between health and hygiene. | 2 |
| 17. Suggests four ways on how to work effectively in a team. | 2 |

Answer the following questions in 60-100 words:

- | | |
|---|---------|
| 18. Explain any four retail categories based on ownership structure. | 4 |
| 19. a. State any two objectives of retail transportation. Explain the solutions to overcome problems in retail transport. | (1+3=4) |

Or

- | | |
|---|---|
| b. Explain any four factors to be kept in mind during delivery of products. | 4 |
| 20. Explain four guidelines and instructions to be followed for lifting and handling equipment in retail store. | 4 |
| 21. a. Explain any four rights of employees in an organisation. | 4 |

Or

- | | |
|---|---|
| b. Discuss the various skills required for achieving goals. | 4 |
|---|---|

2025

Beauty & Wellness (Vocational)

Total marks : 50

Time : 2 hours

General instructions :

- i) Approximately 10 minutes is allotted to read the question paper and revise the answers.
- ii) All questions are compulsory.
- iii) The question paper consists of 21 questions.
- iv) Marks allocated to every question are indicated against it.
- v) Write the correct question number in your answer sheet to indicate the option being attempted.

N.B: Check to ensure that all pages of the question paper are complete as indicated on the top left side.

1. Choose the correct answer from the given alternatives: 1x10=10

- i. It refers to our sense of smell:
 - a) Chromatics
 - b) Chronemics
 - c) Olfactics
 - d) Haptics
- ii. Window 10 is an operating system by
 - a) Microsoft
 - b) Sony
 - c) Apple
 - d) Samsung
- iii. Keratin is a _____
 - a) fat
 - b) tissue
 - c) protein
 - d) cell
- iv. Which of the following is applied after threading?
 - a) Oil based moisturizer
 - b) Body oil
 - c) Gel based cream
 - d) Cold cream
- v. _____ is an ornament which is very important in showing a positive attitude.
 - a) Anger
 - b) Laughter
 - c) Smile
 - d) Frown
- vi. Which of the following is not a characteristic of an entrepreneur?
 - a) Leadership
 - b) Motivator
 - c) Risk-taking
 - d) Self-doubting
- vii. Which type of wax can be easily prepared at home?
 - a) Soft wax
 - b) Chocolate wax
 - c) Fruit wax
 - d) Sugar wax
- viii. _____ is used as base for eye makeup.
 - a) Concealer
 - b) Eyeliner
 - c) Foundation
 - d) Primer
- ix. For which type of skin is fruit wax recommended?
 - a) Normal skin
 - b) Sensitive skin
 - c) Oily skin
 - d) Combination skin

- x. What is used for skin exfoliation?
- | | |
|----------|-------------|
| a) Toner | b) Cleanser |
| c) Mask | d) Scrub |

Answer the following questions in one word or one sentence:

- | | |
|--|---|
| 2. Define self motivation. | 1 |
| 3. Why should we plan our messages before sending them? | 1 |
| 4. Write one primary goals of sustainable development. | 1 |
| 5. Which skin care product help in maintaining the pH level of our skin? | 1 |
| 6. What is melanin? | 1 |
| 7. Which product is used to conceal darker areas of the skin? | 1 |
| 8. Mention one benefit of using correct etiquettes. | 1 |
| 9. Which muscle causes goose bumps? | 1 |

Answer the following questions in 20-50 words:

- | | |
|--|----------|
| 10. Write two points on how to maintain cultural diversity. | 2 |
| 11. What is the difference between a file and a folder? | 2 |
| 12. What is sebaceous gland? Write its two important functions. | 1+1=2 |
| 13. Mention any four types of skin bleaches available in the market. | 1/2 x4=2 |
| 14. Enlist the various types of makeup. | 2 |
| 15. How do sunscreens help in skin protection? | 2 |
| 16. What is the importance of grooming in beauty industry? | 2 |
| 17. Mention the different types of eyebrow shape. | 2 |

Answer the following questions in 60-100 words:

- | | |
|--|---|
| 18. a. Enumerate any four qualities of Assistant Beauty Therapist. | |
| Or | 4 |
| b. Explain any four ways to maintain salon equipments for long term. | |
| 19. a. Suggest four ways on how nude makeup preparation is done. | 4 |
| Or | |
| b. What is editorial makeup? Explain its planning and preparation. (1+3=4) | |
| 20. Write any four safety tips to be followed in waxing. | 4 |
| 21. Describe any four functions of the skin. | 4 |

2025

Electronics (Vocational)

Total marks: 50

Time: 2 hours

General instructions:

- i) *Approximately 10 minutes is allotted to read the question paper and revise the answers.*
- ii) *All questions are compulsory.*
- iii) *The question paper consists of 21 questions.*
- iv) *Marks allocated to every question are indicated against it.*

N.B: *Check that all pages of the question paper are complete as indicated on the top left side.*

1. Choose the correct answer from the given alternatives: 10x1=10

- i. In Flemming's left-hand rule, the thumb represents the direction of
 - (a) Force
 - (b) Current
 - (c) Magnetic field
 - (d) Electric field
- ii. Which of these would you install in your house to protect your house wiring and appliances from abnormal or fault current?
 - (a) Generator
 - (b) Circuit breaker
 - (c) Transformer
 - (d) Motor
- iii. What type of juicer is also known as cold press juicer?
 - (a) Reamers
 - (b) Centrifugal
 - (c) Juicing press
 - (d) Masticating juicer
- iv. Which of the following serves as a basic principle of working for many home appliances in house hold applications?
 - (a) Heating effect of current
 - (b) Electromagnetism
 - (c) Photo electric effect
 - (d) Conductor
- v. Ram's house caught fire, upon inspection; the source of fire was due to short circuit. Which type of fire is it?
 - (a) Type A
 - (b) Type B
 - (c) Type C
 - (d) Type D
- vi. Avinuo is congratulating Senti on her success by giving her a handshake and patting on her shoulder. Which type of non-verbal communication are they displaying?
 - (a) Paralanguage
 - (b) Kinesics
 - (c) Olfactics
 - (d) Haptics
- vii. Under the primary goals of sustainable development, using eco-friendly materials falls under
 - (a) Economic growth
 - (b) Cultural diversity
 - (c) Environmental protection
 - (d) Social inclusion
- viii. Emotional, mental, physical and social response to any perceived threats and demands are called
 - (a) Self-belief
 - (b) Stress
 - (c) Strategy
 - (d) Meditation

- ix. Which of the following is not a commercial function of an entrepreneur?
 (a) Production (b) Finance
 (c) Policy making (d) Accounting
- x. One of the main reasons why a microwave does not heat is due to its failure in
 (a) Magnetron (b) Wave guide
 (c) Relay (d) Diode

Answer the following questions in one word or one sentence:

2. Define RPM of amotor. 1
3. Name the two types of relays. 1
4. What is a juicer? 1
5. Write any two examples of e-waste. 1
6. Bokivi, a class X student is working hard in his studies in hopes that he would become a state topper. What kind of motivation is he predominantly exhibiting? 1
7. Who is an entrepreneur? 1
8. Why is feedback important in communication? 1
9. What is sustainable development? 1

Answer the following questions in 20-50 words:

10. Write any two damages caused by virus in a computer system. 2
11. Write any two reasons to quit fighting a fire and to evacuate immediately. 2
12. Write any two housekeeping practices that is required for safety from chemical hazards. 2
13. State the function of the following feature of microwave:
 (i) Smart display (ii) Child lock 1+1=2
14. What is a mixer? State the two types of mixers. 1+1=2
15. Differentiate between Brushed motors (BDC) and Brushless motors (BLDC). 2
16. What is meant by Normally Open (NO) and Normally Closed (NC) relays? 2
17. Write the steps to clean a mixer using alcohol. 2

Answer the following questions in 60-100 words:

- 18.a. What is a fuse? Explain briefly the two types of fuses. 1+3=4
- Or**
- b. What is a circuit breaker? Explain briefly the working principle of circuit breaker.
19. Explain any four commonly occurring faults in mixer grinder. 4
20. Explain briefly how does a microwave oven turns electricity into heat. 4
21. a. Explain the various electric shock treatments. 4
- Or**
- b. List and explain any four electrical hazards.

2025

Multi Skill Foundation Course (Vocational)

Total marks: 50

Time: 2 hours

General instructions:

- i) Approximately 10 minutes is allotted to read the question paper and revise the answers.
- ii) All questions are compulsory.
- iii) The question paper consists of 21 questions.
- iv) Marks allocated to every question are indicated against it.
- v) Write the correct question number in your answer sheet to indicate the option being attempted.

N.B: Check to ensure that all pages of the question paper are complete as indicated on the top left side.

1. Choose the correct answer from the given alternatives: 10x1=10

- i. In gas welding, an ingredient used to strengthen metal joints is called
 - (a) Copper
 - (b) Filler metal
 - (c) Iron
 - (d) Gas gun
- ii. This tool is designed by a combination of T-square, Set square and Protractor.
 - (a) Compass
 - (b) Divider
 - (c) French curve
 - (d) Mini drafter
- iii. Which part of the diesel engine regulate the in and out paths of the gas?
 - (a) Valve
 - (b) Piston
 - (c) Fly wheel
 - (d) Crank shaft
- iv. Which of the following is not used in making rain gauge?
 - (a) Funnel
 - (b) Scissor
 - (c) Protractor
 - (d) Marker pen
- v. The process of handling of young seedlings until they are ready for permanent planting is known as
 - (a) Propagation
 - (b) Nursery
 - (c) Grafting
 - (d) Tissue culture
- vi. Which of the following is a branched free floating aquatic fern?
 - (a) Azolla
 - (b) Silage
 - (c) Hydroponic
 - (d) Aerobic
- vii. Blood is red due to the presence of
 - (a) Protein
 - (b) Antigen
 - (c) Haemoglobin
 - (d) Corpuscles
- viii. Public signs and visual symbols are a part of
 - (a) Verbal communication
 - (b) Non-verbal communication
 - (c) Oral communication
 - (d) Visual communication
- ix. The act of performing something without expecting any apparent external rewards is known as
 - (a) Extrinsic motivation
 - (b) Intrinsic motivation
 - (c) Self-motivation
 - (d) Self-regulation

- x. Windows 10 is an operating system developed by
(a) Microsoft (b) Apple
(c) Dell (d) Lenovo

Answer the following questions in one word or one sentence:

- | | |
|---|---|
| 2. List any two components of verbal communication. | 1 |
| 3. What is the other name of positive stress? | 1 |
| 4. What is computer virus? | 1 |
| 5. What is a die used for in plumbing? | 1 |
| 6. State two examples of semiconductor material. | 1 |
| 7. Why is soil testing important? | 1 |
| 8. Through one gram of protein, how many kilocalories (kcal) of energy can be obtained? | 1 |
| 9. What is silage? | 1 |

Answer the following questions in 20-50 words:

- | | |
|---|-------|
| 10. Briefly explain two qualities of successful entrepreneurs. | 2 |
| 11. Write two problems related to sustainable development. | 2 |
| 12. What is ferro-cement? Write one benefit of ferro-cement. | 1+1=2 |
| 13. State four advantages of solar energy. | 2 |
| 14. What is a nursery? Mention two integrative components of nursery. | 1+1=2 |
| 15. Briefly describe pot irrigation. | 2 |
| 16. What is rain water harvesting? Write two advantages of saving rain water. | 1+1=2 |
| 17. Write four factors that affects personal health. | 2 |

Answer the following questions in 60-100 words:

- | | |
|--|---------|
| 18. a. Explain any four from the "5 S" of engineering workshop. | 4 |
| Or | |
| b. What is plaster? Write three advantages of plastering. | (1+3=4) |
| 19. Explain the following in brief: | 2+2=4 |
| i. Electric current | |
| ii. Voltage | |
| 20. Explain layering in gardening. Name the two types of layering. | 3+1=4 |
| 21. a. Name two different components of blood. Which blood groups are known as universal blood groups and why? | 1+1+2=4 |
| Or | |
| b. Describe four major sources of water pollution. | (4) |

2025

Agriculture (Vocational)

Total marks: 50

Time: 2 hours

General instructions:

- i) *Approximately 10 minutes is allotted to read the question paper and revise the answers.*
- ii) *All questions are compulsory.*
- iii) *The question paper consists of 21 questions.*
- iv) *Marks allocated to every question are indicated against it.*

N.B: *Check that all pages of the question paper are complete as indicated on the top left side.*

1. Choose the correct answer from the given alternatives: 10x1=10

- i. Trickle irrigation is also known as
 - (a) Drip irrigation
 - (b) Sprinkler irrigation
 - (c) Flood irrigation
 - (d) Subsurface irrigation
- ii. Which of the following is an example of annual weed?
 - (a) *Daucus carota*
 - (b) *Boerhavia erecta*
 - (c) *Cyperus rotundus*
 - (d) *Sonchus arvensis*
- iii. Which of the following is an artificial intelligence (AI) based tool?
 - (a) Power mode
 - (b) Launch bar
 - (c) Cortana
 - (d) Task bar
- iv. Communication without the use of words, using gestures, sign language is
 - (a) Visual communication
 - (b) Non-verbal communication
 - (c) Verbal communication
 - (d) Graphic communication
- v. Which of the following is a technique to manage stress?
 - (a) Fatigue
 - (b) Frustration
 - (c) Apprehension
 - (d) Physical exercise
- vi. Which of the following is a managerial function of an entrepreneur?
 - (a) Production
 - (b) Personnel
 - (c) Planning
 - (d) Marketing
- vii. Sustainable development requires judicious use of
 - (a) Human resources
 - (b) Natural resources
 - (c) Man made resources
 - (d) Physical resources
- viii. Phomopsis blight is a disease related to which solanaceous vegetable?
 - (a) Brinjal
 - (b) Chilli
 - (c) Tomato
 - (d) Potato
- ix. The process of removing suspended solid particles from a waste stream is
 - (a) Flotation
 - (b) Sedimentation
 - (c) Screening
 - (d) Filtration
- x. While packaging of crops, nets are suitable for
 - (a) Peppers
 - (b) Orange
 - (c) Cucumber
 - (d) Coconut

Answer the following questions in one word or one sentence:

2. What are sprinklers? 1
3. What are botanical insecticides? 1
4. List any two tools for harvesting. 1
5. What is self-motivation? 1
6. What should be the pH range of water used for irrigation of crops? 1
7. What is transplanting? 1
8. List any two measures of physical maturity in solanaceous crops. 1
9. What is mechanical hazard? 1

Answer the following questions in 20-50 words:

10. Differentiate between maturity and ripening. 2
11. What is antivirus software? Give an example. 1+1=2
12. Write two myths and realities about entrepreneurs. 2
13. Name any two crops and its critical period for irrigation. 2
14. Differentiate between pre-emergence and post-emergence herbicides. 2
15. Write any two control measures of leaf curl disease in chillies. 2
16. What are post-harvest operations? Why is pre-cooling important in post-harvest management. 1+1=2
17. Write two first aid steps for bruises. 2

Answer the following questions in 60-100 words:

18. Write four advantages and disadvantages of irrigation system. 4
19. a. List any four characteristics of weeds. 4

Or

4

b. Differentiate between monocot and dicot weeds stating any two features.
20. a. Write any four advantages of natural enemies in vegetable crops. 4

Or

4

b. Explain any four precautions taken during harvesting.
21. Explain briefly any four procedures for providing First Aid in case of medical emergency. 4

2025

Automotive (Vocational)

Total marks: 50

Time: 2 hours

General instructions:

- i) *Approximately 10 minutes is allotted to read the question paper and revise the answers.*
- ii) *All questions are compulsory.*
- iii) *The question paper consists of 21 questions.*
- iv) *Marks allocated to every question are indicated against it.*

N.B: Check that all pages of the question paper are complete as indicated on the top left side.

1. Choose the correct answer from the given alternatives: 10x1=10

- i. Which part of the wheel is used to inflate and deflate the tyres?
 - (a) Lug hole
 - (b) Valve system
 - (c) Wheel hub
 - (d) Wheel rim
- ii. The function of the lubrication system is to
 - (a) Remove additional heat
 - (b) Lower temperature
 - (c) Increase air flow
 - (d) Reduce friction
- iii. Which of the following tool is used in automobile workshop to check the vehicle status through the ECU of the vehicle?
 - (a) Diagnostic tool
 - (b) Battery hydrometers
 - (c) Bottle jack
 - (d) Nut splitters
- iv. A wrench that has one open end and one box end of the same size is called
 - (a) Adjustable wrench
 - (b) Socket wrench
 - (c) Combination wrench
 - (d) Allen wrench
- v. This filter is also called as primary oil filter
 - (a) Cartridge oil filter
 - (b) Fuel-flow oil filter
 - (c) Spin-on oil filter
 - (d) Spinner oil filter
- vi. Which of the following is not a good quality of good customer service in automotive workshop?
 - (a) Empathy
 - (b) Being impatient
 - (c) Active listening
 - (d) Having positive attitude
- vii. It enables secure communication between vehicles as well as vehicle and traffic infrastructure
 - (a) Internet of things
 - (b) Global positioning system
 - (c) Computer vision
 - (d) Engine control unit
- viii. Communication which enables us to share our thoughts with each other by using words are
 - (a) Non-verbal communication
 - (b) Verbal communication
 - (c) Visual communication
 - (d) Graphic communication
- ix. The act of performing something without expecting any apparent external rewards is known as
 - (a) Self-awareness
 - (b) Self-regulation
 - (c) Extrinsic motivation
 - (d) Intrinsic motivation

- x. Which of the following entrepreneurial function involves hiring people for various positions in the organization structure?
- | | |
|-----------------|------------------|
| (a) Directing | (b) Staffing |
| (c) Controlling | (d) Coordination |

Answer the following questions in one word or one sentence:

- | | |
|--|---|
| 2. What is a chassis? | 1 |
| 3. List any two uses of feeler gauge in automobile workshop. | 1 |
| 4. Why is wax applied over the vehicle surface? | 1 |
| 5. What is empathy in customer service? | 1 |
| 6. State one use of GPS trackers in car navigation system. | 1 |
| 7. What is non-verbal communication? | 1 |
| 8. What is self-awareness? | 1 |
| 9. List any two qualities of a successful entrepreneur. | 1 |

Answer the following questions in 20-50 words:

- | | |
|---|-------|
| 10. What are tyres? Name the two types of tyres. | 1+1=2 |
| 11. Write the steps to use scissor jack. | 2 |
| 12. What is engine oil? Name the two main elements of engine oil. | 1+1=2 |
| 13. Write two causes of coolant loss. | 2 |
| 14. Who is an automobile salesperson? Mention one skill an automobile salesperson should possess. | 1+1=2 |
| 15. What is hybrid vehicle? Name any two popular cars that offer hybrid vehicle technology. | 1+1=2 |
| 16. What is antivirus software? Name one antivirus software. | 1+1=2 |
| 17. Write any two main principles of sustainable development. | 2 |

Answer the following questions in 60-100 words:

- 18.a. Explain briefly the working of four stroke IC engine.
- Or**
- 4

b..Explain briefly any four common hand tools used to perform automotive service technician jobs.

- 19.a. Explain four types of engine oil.
- Or**
- 4

b. Explain briefly four signs to identify if the air filter needs to be replaced or not.

20. Mention any four best practices to be followed by a good automobile salesperson.
- 4
21. Explain the working system of keyless entry and start system in vehicles.
- 4

2025

Plumbing (Vocational)

Total marks : 50

Time : 2 hours

General instructions :

- i) Approximately 10 minutes is allotted to read the question paper and revise the answers.
- ii) All questions are compulsory.
- iii) The question paper consists of 21 questions.
- iv) Marks allocated to every question are indicated against it.
- v) Write the correct question number in your answer sheet to indicate the option being attempted.

N.B: Check to ensure that all pages of the question paper are complete as indicated on the top left side.

1. Choose the correct answer from the given alternatives: 10x1=10

- i. The process of using a die is called
 - (a) Tapping
 - (b) Threading
 - (c) Fauceting
 - (d) Tubing
- ii. The fixture for the toilets used to carry out human excreta is called
 - (a) Urinal
 - (b) Flushing cistern
 - (c) Water closets
 - (d) Flush tank
- iii. Mortar is used for
 - (a) Binding construction work
 - (b) Making bricks
 - (c) Making cement
 - (d) Binding pipes
- iv. How many gears are placed in rotary pumps?
 - (a) 6
 - (b) 4
 - (c) 3
 - (d) 2
- v. Bibcock is commonly referred to as
 - (a) Screwdriver
 - (b) Tap or Faucet
 - (c) Valve
 - (d) Cistern
- vi. What type of hazard is health problem caused by exposure to sewage?
 - (a) Biological
 - (b) Chemical
 - (c) Manual handling
 - (d) Ergonomics
- vii. If someone is affectionately hugged or angrily slapped, what type of non-verbal communication is it?
 - (a) Kinesics
 - (b) Proxemics
 - (c) Haptics
 - (d) Paralinguistics
- viii. Positive stress is also known as
 - (a) Survival stress
 - (b) Stressor
 - (c) Distress
 - (d) Eustress
- ix. The small pictures on the desktop are called
 - (a) Wallpaper
 - (b) Taskbar
 - (c) Cortana
 - (d) Icons

- x. Which of the following is not a basic element of entrepreneur according to Howard W. Johnson?
- | | |
|----------------|----------------|
| (a) Awareness | (b) Invention |
| (c) Innovation | (d) Adaptation |

Answer the following questions in one word or one sentence:

- | | |
|---|----------|
| 2. Name any two common tools used for cutting pipes. | 1 |
| 3. What is a washbasin? | 1 |
| 4. What is water meter used for? | 1 |
| 5. Write two safety equipment that should be used while working. | 1 |
| 6. What are communication barriers? | 1 |
| 7. State the two types of self-motivation. | 1 |
| 8. What is an operating system in computer? | 1 |
| 9. List two advantages of considering entrepreneurship as a career. | 1 |

Answer the following questions in 20-50 words:

- | | |
|---|--------------|
| 10. What is the purpose of threading? How is threading done? | 1+1=2 |
| 11. Differentiate between wall-mounted and pedestal washbasin. | 2 |
| 12. Write any two basic masonry tools and write their uses. | 1+1=2 |
| 13. State two advantages of Centrifugal pump. | 2 |
| 14. What is 'dry' repair in plumbing system? | 2 |
| 15. Write two factors that causes odour in a plumbing system. | 2 |
| 16. Why is it important to maintain good personal hygiene? State any two reasons. | 2 |
| 17. Mention any two principles of sustainable development. | 2 |

Answer the following questions in 60-100 words:

- | | |
|--|--------------|
| 18. Describe briefly any four processes of threading a pipe. | 4 |
| 19. a. Write any four precautions to be followed while using a drill. | (4) |
| Or | |
| b. What is a tap or faucet? Briefly explain any three varieties of taps. | 1+3=4 |
| 20. a. Write two advantages and two disadvantages of installing water meter. | |
| Or | |
| b. Describe the factors that causes noise in the plumbing system. | 4 |
| 21. Explain any four hazards found in plumbing industry. | 4 |

2025
MATHEMATICS - A

Total marks : 80

Time : 3 hours

General Instructions:

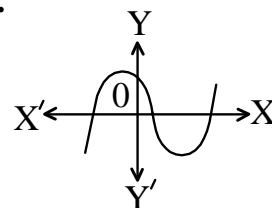
- i) Approximately 15 minutes is allotted to read the question paper and revise the answers.
- ii) The question paper consists of 23 questions.
- iii) All questions are compulsory.
- iv) Internal choice has been provided in some questions.
- v) Marks allocated to each question are indicated against it.

N.B: Check to ensure that all pages of the question paper are complete as indicated on the top left side.

Section – A**1. Choose the correct answer from the given alternatives.**

- (a) The number of zeroes of the polynomial $y = p(x)$ in the adjoining graph is

- (i) 0 (ii) 2
(iii) 3 (iv) 4



1

- (b) The pair of linear equations $2x - 3y = 5$ and $-6y + 4x > 10 = 0$ have
- (i) many solutions. (ii) two solutions.
(iii) one solution. (iv) no solutions.

1

- (c) If the equation $x^2 + 4x + k = 0$ has real and distinct roots, then
- (i) $k < 4$ (ii) $k \leq 4$ (iii) $k > 4$ (iv) $k \geq 4$

1

- (d) What is the common difference of an A.P. in which $a_8 - a_6 = 8$?
- (i) 8 (ii) 6 (iii) 4 (iv) 2

1

- (e) If $\sin \theta = \frac{a}{b}$, then $\cos \theta$ is equal to

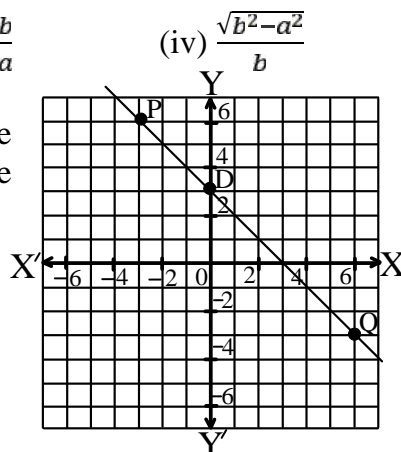
- (i) $\frac{a}{\sqrt{b^2 - a^2}}$ (ii) $\frac{b}{\sqrt{b^2 - a^2}}$ (iii) $\frac{b}{a}$ (iv) $\frac{\sqrt{b^2 - a^2}}{b}$

1

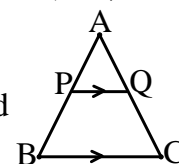
- (f) In the adjacent figure, the point D on the y-axis divides the line segment PQ in the ratio

- (i) 2 : 9 (ii) 1 : 4
(iii) 1 : 3 (iv) 1 : 2

1



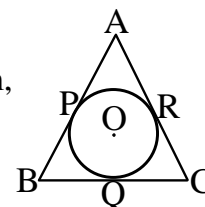
- (g) In the adjoining figure, $PQ \parallel BC$ if $PB = 6$ cm, $AP = 4$ cm and $AQ = 8$ cm. The length of AC is equal to



1

- (i) 6 cm (ii) 12 cm
(iii) 14 cm (iv) 20 cm

- (h) In the adjoining figure, a circle touches the sides AB , BC and AC of $\triangle ABC$ at P , Q and R respectively. If $AP = 4$ cm, $BP = 6$ cm, $AC = 12$ cm, then BC is equal to



1

- (i) 12 cm (ii) 14 cm
(iii) 15 cm (iv) 16 cm

- (i) If tangents PA and PB from a point P to a circle with centre O are inclined to each other at angle of 60° , then $\angle POA$ is equal to

1

- (i) 120° (ii) 80° (iii) 70° (iv) 60°

- (j) Area of a sector of angle P (in degrees) of a circle with radius R is

1

- (i) $\frac{P}{1^\circ} \times 2\pi$ (ii) $\frac{P}{1^\circ} \times \pi R^2$ (iii) $\frac{P}{3^\circ} \times 2\pi$ (iv) $\frac{P}{7^\circ} \times 2\pi R^2$

- (k) The perimeter of quadrant of a circle whose radius is $\frac{7}{2}$ cm is

1

- (i) 3.5 cm (ii) 5.5 cm (iii) 7.5 cm (iv) 12.5 cm

- (l) If the ends of a cylinder are covered by two hemispherical shaped lid of equal shape, then the total curved surface area of the new object will be

1

- (i) $4\pi rh + 2\pi r^2$ (ii) $4\pi rh - 2\pi r^2$ (iii) $2\pi rh + 4\pi r^2$ (iv) $2\pi rh + 4\pi r$

- (m) The total surface area of a hemispherical solid having radius 7 cm is

1

- (i) 154 cm^2 (ii) 294 cm^2 (iii) 462 cm^2 (iv) 588 cm^2

- (n) In a competitive examination, 85 boys and 35 girls appeared. The mean marks of boys was found to be 40%, whereas the mean marks of girls was 60%. The average marks percentage of these students is

1

- (i) 45.00 (ii) 45.83 (iii) 54.00 (iv) 54.38

- (o) If $P(E)$ denotes the probability of an event E , then

1

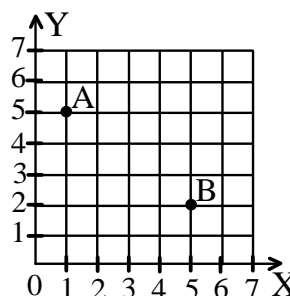
- (i) $P(E) < 0$ (ii) $P(E) > 1$ (iii) $0 \leq P(E) \leq 1$ (iv) $-1 \leq P(E) \leq 1$

Section – B

2. Find the HCF of 96 and 404 by prime factorisation method and find their LCM. 2

3. For what value of k does the quadratic equation $kx(x - 2) + 6 = 0$; $k \neq 0$ have two equal roots? 2

4. If in a right triangle, $\sec = \frac{1}{1}$, calculate \cot and cosec . 2
5. In the given figure, find the distance between A and B. 2
6. E and F are points on the sides PQ and PR respectively of a ΔPQR . $PQ = 1.28$ cm, $PR = 2.56$ cm, $PE = 0.18$ cm and $PF = 0.36$ cm. Check, whether $EF \parallel QR$ or not. 2
7. To build a wind turbine for generating energy in a Science project, Kavili of Class X is asked to cut six sectors of equal areas from a circular metal sheet of diameter 14 cm. She then removes alternate three sectors such that, the remaining three sectors form a wind turbine (as shown in the figure). Find the area of metal sheet removed. 2
8. A lot consists of 144 ball pens of which 20 are defective and the others are good. Nuri will buy a pen if it is good, but will not buy if it is defective. The shopkeeper draws one pen at random and gives it to her. What is the probability that (i) she will buy it? (ii) she will not buy it? 2



Section – C

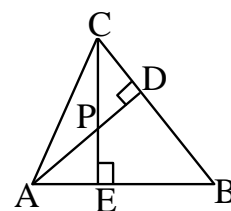
9. Find the zeroes of the quadratic polynomial $6x^2 - 3 - 7x$ and verify the relationship between the zeroes and the coefficients. 3
- 10.(a) Solve the pair of linear equations by elimination method: $3x - 5y - 4 = 0$ and $9x = 2y + 7$ 3
- Or**
- (b) Solve the equation $\sqrt{2}x^2 + 7x + 5\sqrt{2} = 0$ by using quadratic formula. 3
11. (a) The sum of the 4th and 8th terms of an A.P. is 24 and the sum of the 6th and 10th terms is 44. Find the first three terms of the A.P. 3
- Or**
- (b) The first term and last term of an A.P. are 17 and 350 respectively. If the common difference is 9, how many terms are there and what is their sum? 3
12. If $\sin (A - B) = \frac{1}{2}$, $\cos (A + B) = \frac{1}{2}$, $0^\circ < A + B \leq 90^\circ$, $A > B$, find A and B. 3
13. Prove that : $\sqrt{\frac{1+\sin A}{1-\sin A}} = \sec A + \tan A$, where angle A is acute. 3

14. a. Two poles of equal heights are standing opposite each other on either side of the road, which is 80 m wide. From a point between them on the road, the angles of elevation of the top of the poles are 60° and 30° respectively. Find the height of the poles and the distances of the point from the poles.

Or

- b. The shadow of a tower standing on a level ground is found to be 40m longer when the sun's altitude is 30° than when it is 60° . Find the height of the tower.
15. Find the area of a rhombus if its vertices are (3, 0), (4, 5), (-1, 4) and (-2, -1) taken in order.

16. In the adjoining figure, altitudes AD and CE of $\triangle ABC$ intersect each other at the point P. Show that:
(i) $\triangle AEP \sim \triangle CDP$ (ii) $\triangle ABD \sim \triangle CBE$



17. a. Prove that the lengths of tangents drawn from an external point to a circle are equal.

Or

- b. Prove that the parallelogram circumscribing a circle is a rhombus.
18. In a circle of radius 21 cm, an arc subtends an angle of 60° at the centre. Find:
(i) the length of the arc, (ii) area of the sector formed by the arc.

19. a. A tent is in the shape of a cylinder surmounted by a conical top. The height and diameter of the cylindrical part are 2.1 m and 4 m respectively, and the slant height of the top is 2.8 m. Find the area of the canvas used for making the tent and the cost of the canvas of the tent at the rate of ₹500 per m^2 .

Or

- b. A solid iron pole consists of a cylinder of height 220 cm and base diameter 24 cm, which is surmounted by another cylinder of height 60 cm and radius 8 cm. Find the mass of the pole, given that 1 cm^3 of iron has approximately 8 g mass (Use $\pi = 3.14$)
20. The distance traveled before a tyre needs to be replaced was recorded by the tyre manufacturer. The outcomes of 1000 instances are displayed in the table below.

Distance (in km)	Less than 4000	4000 to 9000	9001 to 14000	More than 14000
No. of tyres	20	210	325	445

What is the probability that, if a tyre is purchased from this company:

- (i) it has to be replaced before 4000 km is covered?
(ii) it will last more than 9000 km?

Section – D

21. Answer any one from the following questions (a) to (c):

5

- a. Draw the graphs of the equations $x - y + 1 = 0$ and $3x + 2y - 12 = 0$. Determine the coordinate of the vertices of the triangle formed by these lines and the x -axis and shade the triangular region.

Or

- b. A lending library has a fixed charge for the first three days and an additional charge for each day thereafter. Saritha paid ₹27 for a book kept for seven days, while Susy paid ₹21 for a book she kept for five days. Find the fixed charge and the daily charge for each extra day.

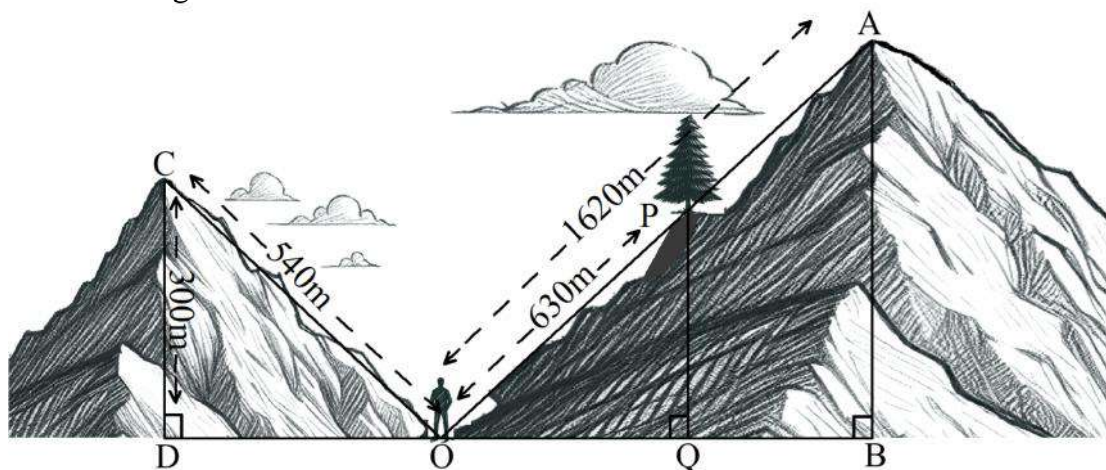
Or

- c. Is it possible to construct a 400 m^2 rectangular park with an 80 m perimeter? Using discriminant, determine whether or not the above situation is possible. If at all possible, use the quadratic formula to determine its length and breadth.

22. Answer any one from the following questions (a) to (c):

5

- a. Akaho is standing at point O, which is positioned between two parallel mountains that differ in height. The line joining their tops to the point O are equally inclined to the level ground. The smaller mountain is 300 meters high. At point P, a pine tree stands on the slope of the bigger mountain. Akaho observes that the foot of the tree just touches the line of sight to the top of the bigger mountain. Using *similarity of triangles*, answer the following:

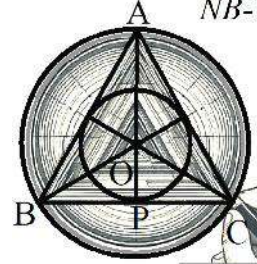


- (i) What is the height of the bigger mountain?
 (ii) What is the difference in height between PQ and CD?

Or

- b. Lanu draws a logo design of a circle of radius 2 cm, whose center O inscribed in $\triangle ABC$, is circumscribed by another circle with the same center.

Determine the radius OB, if the ratio of the radius OP to the radius OB is 1:2. Show that ABC is equilateral as well.



Or

- c. Landscape designer, Pangmong creates a circular fountain circumscribed by a quadrilateral shaped walkway. Show that the opposite sides of the walkway subtend supplementary angles at the fountain's center.



23. Answer any one from the following questions (a) to (c):

5

- a. The median of the following data is 525. Find the values of x and y , if the total frequency is 100.

Class intervals	0-100	100-200	200-300	300-400	400-500	500-600	600-700	700-800	800-900	900-1000
Frequency	2	5	x	12	17	20	y	9	7	4

Or

- b. In a retail market, fruit vendors were selling mangoes kept in packing boxes. These boxes contained varying number of mangoes. The following was the distribution of mangoes according to the number of boxes.

No. of mangoes	50-52	53-55	56-58	59-61	62-64
No. of boxes	15	110	135	115	25

Find the mean number of mangoes kept in a packing box using Assumed Mean method.

Or

- c. The lengths of 40 leaves of a plant are measured correct to the nearest millimeter, and the data obtained is represented in the following table:

Length (in mm)	118-126	127-135	136-144	145-153	154-162	163-171	172-180
No. of leaves	3	5	9	12	5	4	2

Find the median length of the leaves.

Total number of printed pages : 6

NB-T/M-B/1

2025
MATHEMATICS - B

Total marks : 80

Time : 3 hours

General Instructions:

- i) Approximately 15 minutes is allotted to read the question paper and revise the answers.
- ii) The question paper consists of 23 questions.
- iii) All questions are compulsory.
- iv) Internal choice has been provided in some questions.
- v) Marks allocated to each question are indicated against it.

N.B: Check to ensure that all pages of the question paper are complete as indicated on the top left side.

Section – A

1. Choose the correct answer from the given alternatives.

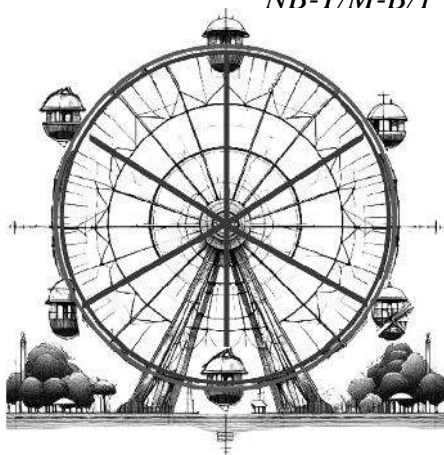
- (a) The degree of the polynomial $5x^4 + 4x^3 + 3x^2 + 2$ is **1**
(i) 5 (ii) 4 (iii) 3 (iv) 2
- (b) A pair of linear equations $a_1x + b_1y + c_1 = 0$ and $a_2x + b_2y + c_2 = 0$ is said to be inconsistent if **1**
(i) $\frac{a_1}{a_2} \neq \frac{b_1}{b_2}$ (ii) $\frac{a_1}{a_2} = \frac{b_1}{b_2} \neq \frac{c_1}{c_2}$
(iii) $\frac{a_1}{a_2} = \frac{b_1}{b_2} = \frac{c_1}{c_2}$ (iv) $\frac{a_1}{a_2} \neq \frac{c_1}{c_2}$
- (c) The roots of the equation $3x^2 - 2\sqrt{6}x + 2 = 0$ are **1**
(i) $-\sqrt{\frac{2}{3}}, -\sqrt{\frac{2}{3}}$ (ii) $\sqrt{\frac{2}{3}}, \sqrt{\frac{2}{3}}$ (iii) $\sqrt{2}, \sqrt{2}$ (iv) $-\sqrt{2}, -\sqrt{2}$
- (d) In the given A.P., $-5, -1, 3, 7, \dots$ the common difference is **1**
(i) -4 (ii) 0 (iii) 4 (iv) 8
- (e) If $\tan \theta = 1$, then the value of θ is **1**
(i) 0° (ii) 30° (iii) 45° (iv) 90°
- (f) The distance of the point P(2, 3) from the x-axis is **1**
(i) 1 (ii) 2 (iii) 3 (iv) 5
- (g) Which of the following are not similar figures? **1**
(i) Circles (ii) Squares
(iii) Equilateral triangles (iv) Isosceles triangles

- (h) A tangent intersects the circle at 1
 (i) one point. (ii) two distinct points.
 (iii) at the circle. (iv) none of these.
- (i) From a point Q, the length of the tangent to a circle is 8 cm and the distance of Q from the centre is 10 cm. The radius of the circles is 1
 (i) 5 cm (ii) 6 cm (iii) 9 cm (iv) 12 cm
- (j) What will be the area of a sector of a circle with radius 6 cm, if the angle of the sector is 60° 1
 (i) $\frac{122}{7}$ (ii) $\frac{132}{7}$ (iii) $\frac{142}{7}$ (iv) $\frac{152}{7}$
- (k) The perimeter of quadrant of a circle whose radius is $\frac{7}{2}$ cm is 1
 (i) 3.5 cm (ii) 5.5 cm (iii) 7.5 cm (iv) 12.5 cm
- (l) If r is the radius of the sphere, then the surface area of the sphere is 1
 (i) $4\pi r^2$ (ii) $2\pi r^2$ (iii) πr^2 (iv) $\frac{4}{3}\pi r^2$
- (m) The volume of a cone whose radius is 7 cm and height 12 cm is 1
 (i) 524 cm^3 (ii) 585 cm^3 (iii) 604 cm^3 (iv) 616 cm^3
- (n) The class mark of the interval 35-45 is 1
 (i) 10 (ii) 35 (iii) 40 (iv) 45
- (o) A bag contains 4 red and 6 black balls. A ball is taken out of the bag at random. The probability of getting a black ball is 1
 (i) $\frac{1}{6}$ (ii) $\frac{2}{5}$ (iii) $\frac{3}{5}$ (iv) 1

Section – B

2. Find the LCM and HCF of 12, 15 and 21 by prime factorisation method. 2
3. For what value of k does the quadratic equation $2x^2 + kx + 3 = 0$ have two equal roots? 2
4. Evaluate: $\sin 60^\circ \cos 30^\circ + \sin 30^\circ \cos 60^\circ$ 2
5. Find the distance between the points (2, 3) and (4, 1) 2
6. E and F are points on the sides PQ and PR respectively of a ΔPQR . If $PE = 4 \text{ cm}$, $QE = 4.5 \text{ cm}$, $PF = 8 \text{ cm}$ and $RF = 9 \text{ cm}$ then show that $EF \parallel QR$. 2

7. The diameter of a ferris wheel is 50 meters. The ferris wheel's circular section is divided into equal sectors, with a central angle of 60° . Calculate the area of each sector of the circular part.
[Use $f = \frac{2}{7}$]



2

8. If $P(E) = 0.05$, what is the probability of 'not E'?

2

Section – C

9. Find the zeroes of the quadratic polynomial $x^2 - 2x - 8$ and verify the relationship between the zeroes and the coefficients.

3

- 10.(a) Solve the pair of linear equations by elimination method:

$$x + y = 14 \text{ and } x - y = 4$$

Or

3

- (b) Find the roots of the quadratic equation $100x^2 - 20x + 1 = 0$ by factorization method.

11. (a) The 17th term of an A.P. exceeds its 10th terms by 7. Find the common difference.

Or

3

- (b) Find the sum of the first 15 multiples of 8.

12. In $\triangle ABC$ right-angled at B, if $\tan A = \frac{1}{\sqrt{3}}$, find the value of $\sin A \cos C + \cos A \sin C$

3

13. Prove that: $(\operatorname{cosec} A - \sin A)(\sec A - \cos A) = \frac{1}{\tan A + \cot A}$, where angle A is acute.

3

14. a. A tree breaks due to storm and the broken part bends so that the top of the tree touches the ground making an angle 30° with it. The distance between the foot of the tree to the point where the top touches the ground is 8 m. Find the height of the tree.

Or

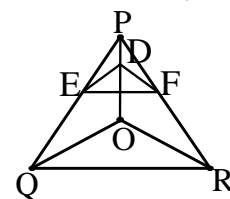
3

- b. The angle of elevation of the top of a tower from a point on the ground which is 30 m away from the foot of the tower is 30° . Find the height of the tower.

15. Find the coordinates of a point A where AB is the diameter of a circle whose centre is (2, -3) and B is (1, 4).

3

16. In the adjoining figure, if $DE \parallel OQ$ and $DF \parallel OR$, show that $EF \parallel QR$.



3

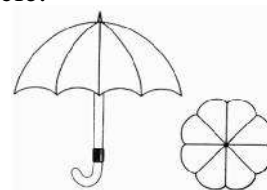
17. a. Prove that the lengths of tangents drawn from an external point to a circle are equal.

Or

- b. Two concentric circles are of radii 5 cm and 3 cm. Find the length of the chord of the larger circle which touches the smaller circle.

3

18. An umbrella has 8 ribs which are equally spaced. Assuming umbrella to be a flat circle of radius 45 cm, find the area between the two consecutive ribs of the umbrella.



3

19. a. A toy is in the form of a cone of radius 3.5 cm mounted on a hemisphere of same radius. The total height of the toy is 15.5 cm. Find the total surface area of the toy. (Use $\pi = \frac{22}{7}$)

Or

- b. A solid is in the shape of a cone standing on a hemisphere with both their radii being equal to 1 cm and the height of the cone is equal to its radius. Find the volume of the solid in terms of π . (Use $\pi = \frac{22}{7}$)

3

20. This summer, Ketho made the decision to read a few books. To get a book, he visits the library. 25 books are stacked on a shelf. There are 7 Biographies, 8 Fantasy Novels and 10 Science Fiction books. What is the probability that:
(i) he choose a Biography book? (ii) he choose a Science Fiction book?
(iii) he choose both fictional books on Fantasy and Science?

3

Section – D

21. Answer any one from the following questions (a) to (c):

5

- a. Draw the graphs of the equations $x - y + 1 = 0$ and $3x + 2y - 12 = 0$. Determine the coordinate of the vertices of the triangle formed by these lines and the x -axis and shade the triangular region.

Or

- b. A fraction becomes $\frac{9}{1}$ if 2 is added to both the numerator and the denominator. If 3 is added to both the numerator and the denominator, it becomes $\frac{5}{6}$. Find the fraction.

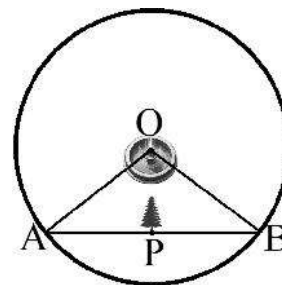
Or

- c. Is it possible to construct a rectangular mango grove whose length is twice its breadth and the area is 800 m^2 ? Using discriminant, check whether the above situation is possible or not. If possible, find its length and breadth using the quadratic formula.

22. Answer any one from the following questions (a) to (c):

5

- a. Tia is standing at a water-fountain which is located at the center of a 50-meter-radius circular park. He sees his two buddies, Avika and Bobby, standing at locations A and B respectively, on the park's edge. A pine tree is located perpendicular to the centre O at position P, creating two triangles $\triangle OAP$ and $\triangle OBP$.

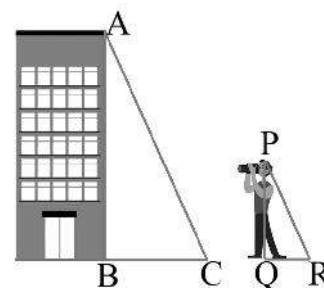


(i) Prove that $\triangle OAP \sim \triangle OBP$.

(ii) If the pine tree is 30 m away from Bobby, what is the distance between Avika and Bobby?

Or

- b. Rawat is a photographer who wants to capture a picture of a building's height. At a particular instance, the length of the building's shadow and the length of Rawat's shadow are 24 m and 4 m respectively. Using the given information:

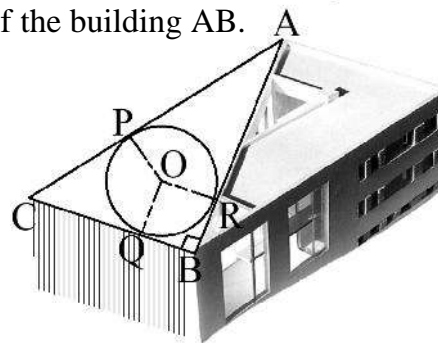


(i) Prove that $\triangle ABC \sim \triangle PQR$

(ii) If Rawat is $PQ = 1.6 \text{ m}$ tall, find the height of the building AB.

Or

- c. A courtyard is in the shape of a triangle with right angle at B, $BC = 6 \text{ cm}$ and $AB = 8 \text{ cm}$. Within the courtyard, a pit was excavated so that it touches the walls AC, BC and AB at P, Q and R respectively. Find the radius of the pit.



23. Answer any one from the following questions (a) to (c):

5

- a. The following distribution shows the daily pocket allowance of children of a locality. The mean pocket allowance is ₹18. Find the missing frequency f .

Daily pocket allowance (in ₹)	11-13	13-15	15-17	17-19	19-21	21-23	23-25
No. of children	7	6	9	13	f	5	4

Or

- b. A student noted the number of cars passing through a spot on a road for 100 periods each of 3 minutes and summarized it in the table given below. Find the mode of the data:

No. of cars	0-10	10-20	20-30	30-40	40-50	50-60	60-70	70-80
Frequency	7	14	13	12	20	11	15	8

Or

- c. The following table gives the distribution of the life time of 400 neon lamps:

Life time (in hours)	1500- 2000	2000- 2500	2500- 3000	3000- 3500	3500- 4000	4000- 4500	4500- 5000
No. of lamps	14	56	60	86	74	62	48

Find the median life of a lamp.
